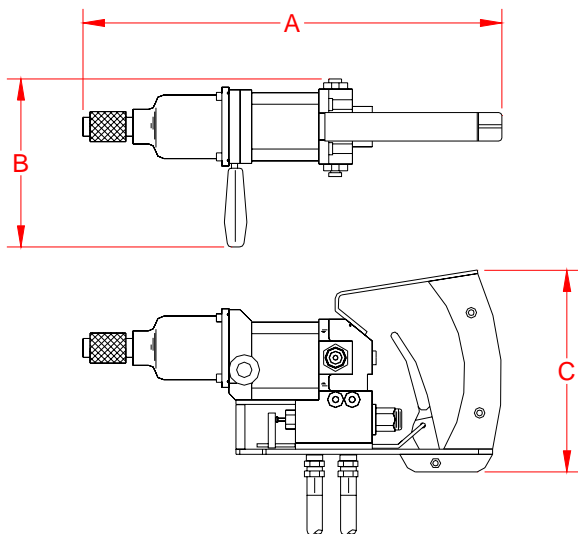
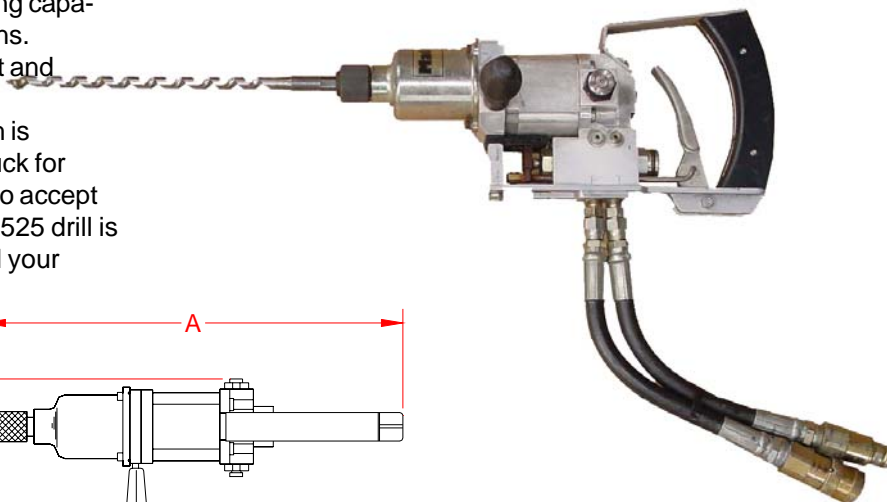


04500D/04525
1/2" HYDRAULIC
DRILL /IMPACT WRENCH

The Matweld Impact drill/wrench is designed to offer the operator superior torque handling capabilities under the most adverse conditions. Operators will appreciate the lightweight and ergonomic design.

The 04500D Impact drill/wrench is equipped with a 7/16" quick change chuck for drilling and a 1/2" square drive adapter to accept a variety of 1/2" impact sockets. The 04525 drill is equipped with a 5/8" keyed chuck for all your drilling needs.



FLOW	PRESSURE	DIMENSIONS	WEIGHT
5 gpm (19 lpm)	2000 psi (140 bar)	A - 10" B - 7" C - 7"	11 lbs (4.9 kg)

ACCESSORIES:

- 01743 - counter bore 1-1/2"
- 01750 - counter bore 2-9/16"
- 01751 - counter bore 3"
- 01774 - 7/16" x 1/2" auger bit
- 01783 - 7/16" x 18 auger bit
- 01775 - 1/2" x 12" auger bit
- 01782 - 9/16" x 18" auger bit
- 01777 - 11/16" x 12" auger bit
- 01781 - 11/16" x 18" auger bit
- 01795 - 5/8" x 18" auger bit

MATWELD, INC.

PHONE:(270) 444-0085

FAX:(270) 443-6180

Matweld reserves the right to change parts, features, or specifications without notice.

MATWELD, INC.

PHONE:(270) 444-0085

FAX:(270) 443-6180

Matweld reserves the right to change parts, features, or specifications without notice.

GENERAL SAFETY PRECAUTIONS:

TOOL OPERATORS AND MAINTENANCE PERSONNEL MUST ALWAYS COMPLY WITH THE SAFETY PRECAUTIONS GIVEN IN THIS MANUAL, AND WITH ALL STICKERS AND TAGS ATTACHED TO THE TOOL AND HOSE. ALL SAFETY PRECAUTIONS ARE GIVEN FOR YOUR SAFETY. READ TO UNDERSTAND AND FOLLOW ALL SAFETY, MAINTENANCE AND OPERATION INSTRUCTIONS BEFORE YOU USE OR MAINTAIN THE TOOL. REVIEW THE MANUAL DAILY BEFORE USING THE TOOL. IN ADDITION, FOLLOW ALL SAFETY GUIDELINES GIVEN YOU BY YOUR SUPERVISOR. DO NOT USE THE TOOL IF YOU HAVE ANY QUESTIONS ABOUT THE OPERATION, SAFETY OR MAINTENANCE OF THIS TOOL. FAILURE TO FOLLOW THESE INSTRUCTIONS CAN RESULT IN PERSONAL INJURY OR EQUIPMENT DAMAGE.

MATWELD HAS NO CONTROL OVER TOOL USE OR OPERATION ONCE IT LEAVES THE MATWELD PLANT. MATWELD HAS NO CONTROL OVER OPERATOR OR MAINTAINER SELECTION. THE CUSTOMER MUST ASSUME RESPONSIBILITY FOR THE TOOL'S SUITABILITY FOR A PARTICULAR FUNCTION, FOR ANYONE USING THE TOOL OR MAINTAINING THE TOOL REGARDING THEIR FITNESS TO USE THE TOOL OR REPAIR THE TOOL, UNDERSTANDING OF THE OPERATION AND SAFETY AND MAINTENANCE MANUAL, INTELLIGENCE TO USE GOOD JUDGMENT NECESSARY TO WORK SAFELY AND EFFICIENTLY WITHOUT ENDANGERING THEMSELVES OR BYSTANDERS IN THE WORK AREA.

- DO NOT OPERATE THE TOOL UNTIL YOU HAVE BEEN THOROUGHLY AND PROPERLY TRAINED OR UNDER THE SUPERVISION OF AN INSTRUCTOR.
- CHECK POWER SOURCE DAILY TO DETERMINE IF CORRECT FLOW AND PRESSURE ARE AVAILABLE. NEVER EXCEED FLOWS OR PRESSURES FOR THE TOOL BEING USED. PERSONAL INJURY OR DAMAGE TO THE TOOL CAN RESULT.
- OPERATORS MUST CLEAR THE WORK AREA OF NON-ESSENTIAL PERSONNEL. FLYING DEBRIS CAN CAUSE SERIOUS INJURY.
- THE OPERATOR MUST BE FAMILIAR WITH ALL PROHIBITED WORK AREAS SUCH AS UNSAFE GRADES, POOR FOOTING AREAS AND OVERHEAD HAZARDS.
- MAINTAIN BALANCE AND PROPER FOOTING AT ALL TIMES. NEVER OVERREACH TO THE EXTENT THAT A BROKEN PART OR SUDDEN MOVEMENT OF THE TOOL CAN CAUSE YOU TO LOSE YOUR BALANCE AND FALL, OR CAUSE INJURY TO YOUR SELF OR SOMEONE ELSE.

- WHEN WORKING NEAR ELECTRICAL CONDUCTORS, ALWAYS ASSUME THAT THE CONDUCTORS ARE ENERGIZED AND THAT HOSES AND CLOTHING CAN CONDUCT HARMFUL ELECTRICITY. USE HOSES LABELED AND CERTIFIED AS NON-CONDUCTIVE.
- DO NOT OPERATE THE TOOL AT EXCESSIVE FLUID TEMPERATURES OPERATOR DISCOMFORT AND POTENTIAL BURNS CAN RESULT AT HIGH OIL TEMPERATURES.
- NEVER WEAR LOOSE CLOTHING THAT CAN GET ENTANGLED IN THE WORKING PARTS OF THE TOOLS OR BE CARELESS WITH HANDS, FEET OR OTHER BODY PARTS AROUND THE WORKING PARTS OF THE TOOLS. HYDRAULIC TOOLS EXERT HIGH TORQUE AND FORCE AND CAN CAUSE SERIOUS INJURY OR DEATH IF IMPROPERLY USED.
- TO AVOID PERSONAL INJURY OR EQUIPMENT DAMAGE, ALL TOOL REPAIR, MAINTENANCE OR SERVICE MUST ONLY BE PERFORMED BY AUTHORIZED AND PROPERLY TRAINED PERSONNEL.
- ALWAYS WEAR SAFETY EQUIPMENT SUCH AS OIL INJECTION RESISTANT WORK GLOVES, SAFETY GLASSES, SAFETY BOOTS, EAR PROTECTION AND OTHER SAFETY APPAREL DICTATED BY YOUR SUPERVISOR APPLICABLE FOR THE JOB YOU ARE DOING AND THE TOOL YOU ARE USING.
- DO NOT CLEAN INSPECT OR REPAIR THE TOOL WHILE CONNECTED TO THE POWER SOURCE. ACCIDENTAL ENGAGEMENT OF THE TOOL CAN CAUSE SERIOUS PERSONAL INJURY.
- OIL INJECTION HAZARD EXISTS WITH THIS TOOL. OIL INJECTION IS A CONDITION WHERE HYDRAULIC OIL IS INJECTED UNDER THE SKIN FROM PRESSURE IN THE LINE. ALWAYS WEAR GLOVES AND REPAIR ANY LEAKS IMMEDIATELY. NEVER CARRY A TOOL BY THE HOSES.
- DO NOT USE DAMAGED EQUIPMENT. IMMEDIATELY REPLACE ANY DAMAGED HOSES, FITTINGS, OR OTHER COMPONENTS SHOWING WIRE BRAID, NICKS, CUTS, DAMAGE OR ABRASIONS. FAILURE TO DO SO MAY RESULT IN EQUIPMENT DAMAGE AND / OR PERSONAL INJURY OR DEATH.
- CLEAN UP ANY OIL OR FLUID SPILLS IMMEDIATELY.

SAFETY PRECAUTIONS:

1. **ALWAYS** WEAR PROTECTIVE EQUIPMENT SUCH AS GLOVES, SAFETY GLASSES, EAR PROTECTION AND SAFETY SHOES.
2. DO NOT WEAR CLOTHING WHICH MAY BECOME ENTANGLED IN THE TOOL.
3. **ALWAYS** KEEP WORK AREA FREE OF TOOLS OR ANY OTHER OBJECTS WHICH MAY IMPAIR SOUND FOOTING.
4. **CAUTION** - OIL INJECTION HAZARD EXISTS WITH THIS TOOL. OIL INJECTION IS A CONDITION WHERE THE HYDRAULIC OIL IS FORCED UNDER THE SKIN THROUGH PRESSURE IN THE LINE. ALWAYS WEAR GLOVES AND REPAIR LEAKS IMMEDIATELY.
5. **DO NOT** CARRY THE TOOL BY THE PIGTAIL HOSES.
6. **DO NOT** OVER TORQUE TRACK AND FROG BOLTS.
7. **DO NOT** USE DEFECTIVE SOCKETS OR THOSE NOT MANUFACTURED FOR IMPACT WRENCHES.
8. DO NOT ATTEMPT TO LOOSEN **LOCKED UP** WRENCH WITH ANY HAND TOOL. DISCONNECT FROM POWER SOURCE AND **THEN** REPAIR WRENCH.
9. USE A SOCKET RETAINING RING TO KEEP SOCKET ON THE ANVIL.

OPERATION

04500D IMPACT DRILL

1. With the power source in the "off" position. Connect the hoses. Do not drag the service hose by pulling with the tool. Loop the service hose in the work area in such a way to relieve stress on the hose and quick disconnect fittings while working. Be aware of hose locations at all times.
2. Connect the tool to the power source.
3. Turn the power source to the "on" position to supply 5 gpm to the impact wrench.
4. To tighten bolts, push the rotation valve (located on the right rear of impact wrench) "in" and rotate clockwise to lock in place. To loosen bolt, push valve "in" slightly and rotate counterclockwise to spring out.
5. Pull the trigger to activate the impact wrench.
6. **NEVER** operate the wrench on any higher flow than 5 gpm. The tool is designed to accept only the recommended 5 gpm and will malfunction and overheat the oil if used otherwise.
7. Turn the power source "off" before disconnecting wrench.

MAINTENANCE:

MAINTENANCE:

1. CHECK TOOL DAILY FOR PROPER OPERATION, LEAKS, OR DAMAGE.
2. INSPECT HOSES DAILY. REPLACE CUT, BURNED, OR OTHERWISE DAMAGED HOSES.
3. KEEP QUICK DISCONNECT COUPLERS CLEAN AND LUBRICATED.
4. USE HYDRAULIC FLUIDS THAT COMPLY WITH HTMA SPECIFICATION 5.7, THE HYDRAULIC FLUID SHOULD HAVE A VISCOSITY BETWEEN 100 AND 400 SSU (20-82 CENTISTOKES) AT THE MAXIMUM AND MINIMUM EXPECTED OPERATING TEMPERATURES. PETROLEUM BASED HYDRAULIC FLUIDS WITH ANTI-WEAR PROPERTIES AND A VISCOSITY INDEX OF OVER 140 WORK FOR A WIDE RANGE OF OPERATING CONDITIONS.

THE FOLLOWING OILS MEET HTMA SPECIFICATION 5.7:

AMOCO RYKON MV	CITGO A/W ALL TEMP
SUNVIS 706	MOBIL D.T.E. 13
CHEVRON EP-MV	TEXACO "RANDO" HDAZ

OTHER FLUIDS THAT MEET OR EXCEED THIS SPECIFICATION CAN BE USED.

*SEE COLD WEATHER OPERATION HYDRAULIC OIL NOTE.

5. HAVE TOOL INSPECTED, AT LEAST ANNUALLY, BY MATWELD OR A MATWELD QUALIFIED SERVICE REPRESENTATIVE TO DETERMINE IF TOOL IS IN NEED OF SAFETY CHANGES OR WORN PART REPLACEMENT.

04500D IMPACT DRILL

MAINTENANCE CONTD.

6. CONTACT MATWELD ON A PERODIC BASIS, AT LEAST ANNUALLY, FOR SERVICE BULLETINS, SAFETY NOTICES, OR OTHER IMPORTANT INFORMATION PERTAINING TO THIS TOOL.
7. The impact assembly must be re-packed with grease on a regular basis.

A good rule of thumb is:

Casual usage re-pack every **60** days
Heavy usage re-pack every **30** days

7. The hammering mechansim should be routinely inspected for wear and proper lubrication. This assembly is easily accessed by removing the (4) socket head cap screws that attach the hammer housing to the tool body.

Pack grease into the hammer frame assuring that all parts are liberally coated. Use a high temperature, molybdenum base, and lithium compound grease.

Reinstall using a removable thread locker on the (4) screws and torque to 25 ft. lbs.

REPAIR TROUBLESHOOTING

1. IMPACT WRENCH OVERHEATS...
 - OPERATE WRENCH ON 5 GPM
2. IMPACT WRENCH SPINS BUT WON'T IMPACT...
 - INSPECT FRONT END FOR BROKEN HAMMER PINS OR OTHER BROKEN PARTS.
3. IMPACT WRENCH ONLY WORKS IN ONE DIRECTION...
 - CHECK FRONT END FOR BROKEN PARTS
 - CHECK REVERSING VALVE FOR BENT STEM OR TRASH ON ONE OR MORE VALVE PARTS
4. IMPACT WRENCH WORKS SLOW AND HAS LOW POWER...
 - CHECK THAT TORQUE ADJUSTMENT VALVE IS SCREWED IN AND **NOT** ADJUSTED ALL THE WAY OUT.
 - CHECK THAT FLOW IS 5 GPM AND SYSTEM PRESSURE IS SET AT 2000 PSI
5. TRIGGER STICKS...
 - CHECK FOR DIRT OR CLEARANCE IN TRIGGER HOUSING
 - CHECK FOR REVERSE FLOW (PIGTAILS OR QD'S RECENTLY CHANGED)
 - CHECK BACKPRESSURE ON RETURN LINE (AT TOOL RETURN SHOULD BE 150 PSI OR LESS).
6. HYDRAULIC OIL RUNNING OUT OF FRONT END...
 - REPLACE FRONT SHAFT SEAL USING PART NO. 01612 SHAFT SEAL KIT

REVIEW OF HYDRAULIC PRINCIPLES

A. TOOL CIRCUIT

1. HYDRAULIC FORMULAS:

$$\text{GPM} = \frac{\text{CID X RPM}}{231} \qquad \text{HP} = \frac{\text{GPM X PSI}}{1456.9}$$

Example: HP required to deliver 10 GPM at 1500 PSI.

$$\frac{10 \text{ GPM X } 1500 \text{ PSI}}{1456.9} = \frac{15000}{1456.9} = 10.3 \text{ HP}$$

(subtract back pressure for tool HP)

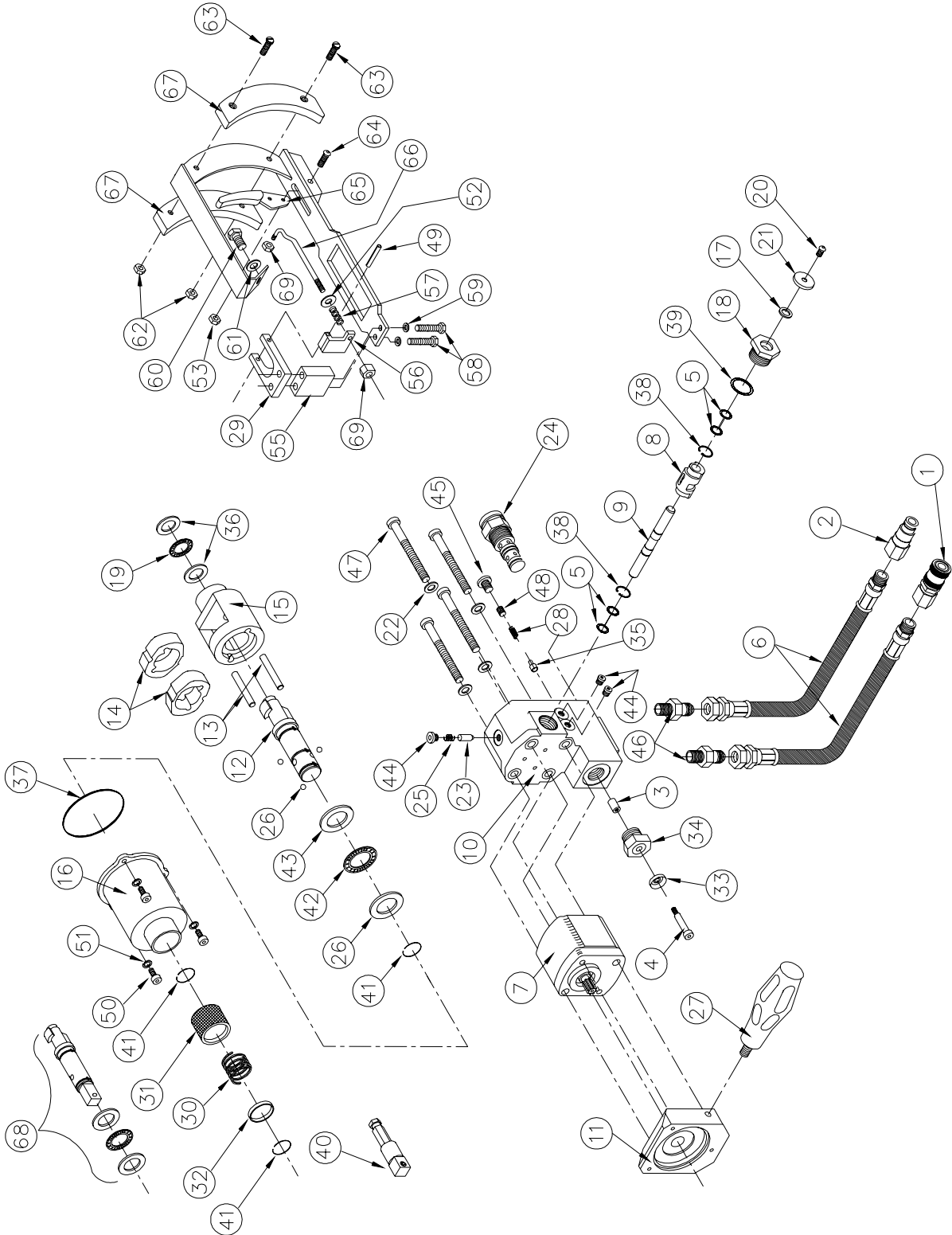
Estimated HP delivered by pump or used by tool.

GPM	500	1,000	1,500	2,000	2,500	3,000
3	1.03	2.06	3.09	4.12	5.15	6.18
5	1.72	3.43	5.15	6.86	8.58	10.30
10	3.43	6.86	10.3	13.70	17.20	20.60
15	5.15	10.30	15.40	20.60	25.70	30.90

2. BACK PRESSURE

BACK PRESSURE MEASURED AT THE TOOL RETURN PORT MUST NOT EXCEED THE MANUFACTURERS BACK PRESSURE RATING. MOST MANUFACTURERS LIST THE MAXIMUM BACK PRESSURE FOR THEIR HYDRAULIC TOOLS AT 250 PSI. BACK PRESSURE MEASURED ON THE RETURN SIDE OF THE TOOL IS THE FORCE REQUIRED TO GET THE OIL BACK TO THE TANK. IN ALMOST ALL CASES THE LOWER THE BACK PRESSURE THE BETTER THE TOOL PERFORMANCE. FIRST, THE BACK PRESSURE IS SUBTRACTED FROM THE MAXIMUM TOOL PRESSURE TO ARRIVE AT A MAXIMUM TOOL OPERATING PRESSURE. FOR EXAMPLE, TOOLS WITH 2000 PSI OPERATING PRESSURE ARE INSTALLED ON A SYSTEM WITH 250 PSI BACK PRESSURE. THIS LEAVES 1750 PSI AS A MAXIMUM TOOL PRESSURE. IMAGINE A SYSTEM WITH 500 PSI BACK PRESSURE. 2000 MINUS 500 PSI BACK PRESSURE LEAVES ONLY 1500 PSI FOR THE TOOL. SECOND, TOOLS ARE DESIGNED FOR PRESSURE TO BUILD ON THE PRESSURE SIDE OF THE TOOL. IF TOO MUCH PRESSURE BUILDS ON THE RETURN SIDE, NOT ONLY IS PERFORMANCE EFFECTED, BUT SEALS MAY BLOW. THIS IS WHY IT IS VERY IMPORTANT TO DIRECT THE FLOW INTO THE TOOL CORRECTLY. REVERSING THE HOSES TO TEST MAY RESULT IN BLOWN SEALS, DAMAGE TO THE TOOL, AND PERSONAL INJURY.

04500D
1/2" IMPACT WRENCH
REV.2 01/02



MATWELD, INC.

PHONE:(270) 444-0085

FAX:(270) 443-6180

Matweld reserves the right to change parts, features, or specifications without notice.

04500D
PARTS LIST
Rev. 2 01/02

ITEM NO.	PART NO.	DESCRIPTION	QUANTITY
1	00145	QD coupler	1
2	00146	QD nipple	1
3	00412	locking pin	1
4	00414	1/4x1" shoulder bolt	1
5	00420	o-ring	4
6	01803	hydraulic hose	2
7	045001	1/2" impact motor	1
8	045002	reversing valve	1
9	045003	reversing valve shaft	1
10	045004	valve manifold	1
11	045005	motor adaptor	1
12	045006	anvil	1
13	045007	hammer pin	2
14	045008	hammer	2
15	045009	hammer frame	1
16	045010	hammer case w/bushing	1
17	045012	wiper seal	2
18	045013	gland nut	2
19	045014	thrust bearing	1
20	045017	12-24 x 3/8" flat head ms	2
21	045018	reversing valve collar	2
22	045019	valve body washer	4
23	045020	reversing valve locator	1
24	045021	trigger valve	1
25	045023	guide spring	1
26	045026	retainer ball	3
27	045028	side handle	1
28	045030	spring	1
29	045031	trigger mount	1
30	045033	coupler spring	1
31	045034	coupler body	1
32	045035	coupler spring retainer	1
33	045036	bellows seal	1
34	045037	guide bushing	1
35	045040	relief poppet	1
36	045041	bearing race	2
37	045042	o-ring	1
38	RE-037	3/8 ext. retaining ring	2
39	045043	o-ring	2
40	045046	adaptor 1/2" square drive	1
41	045047	thrust ring lock	3
42	045048	anvil thrust bearing	1
43	045049	anvil bearing race	2
44	231P-02	#2 str. thrd. sock. plug	4
45	231P-04	#4 str. thrd. sock. plug	1
46	2404-06-04	adaptor 1/4 mp x 3/8 mj	2
47	A5470	5/16-18 x 3/14 shcs	4
48	A5625	5/16-24 x 1/4 set screw	1
49	A6065	5/32 x 1-1/4 spring pin	1
50	A6550	10-24 x 5/8 shcs	3
51	A6800	#10 lock washer	3
52	A2189	#10 flat washer	1
53	A6699	10-24 nylock nut	1
54	045062	"D" handle assembly	1
55	045057	spacer block	1
56	045063	trigger actuator	1
57	045065	trigger spring	1
58	A1007	1/4-20 x 2-1/4 gr. 5 zp	2
59	A2190	1/4 flat washer	2
60	A1021	5/16-18 x 1/2 gr 5 zp	1
61	A2191	5/16 flat washer	1
62	A6749	10-24 hex nut	2
63	A6326	10-24 x 1-1/4 slotted bolt	2
64	A6330	10-24 x 1 bhcs	1
65	045061	trigger	1
66	045060	trigger rod	1
67	045059	handle grip plate	2
68	045095	square drive anvil kit	1
69	A6750	10-32 nylock nut	2
		** - Items are included in 045045 anvil kit	

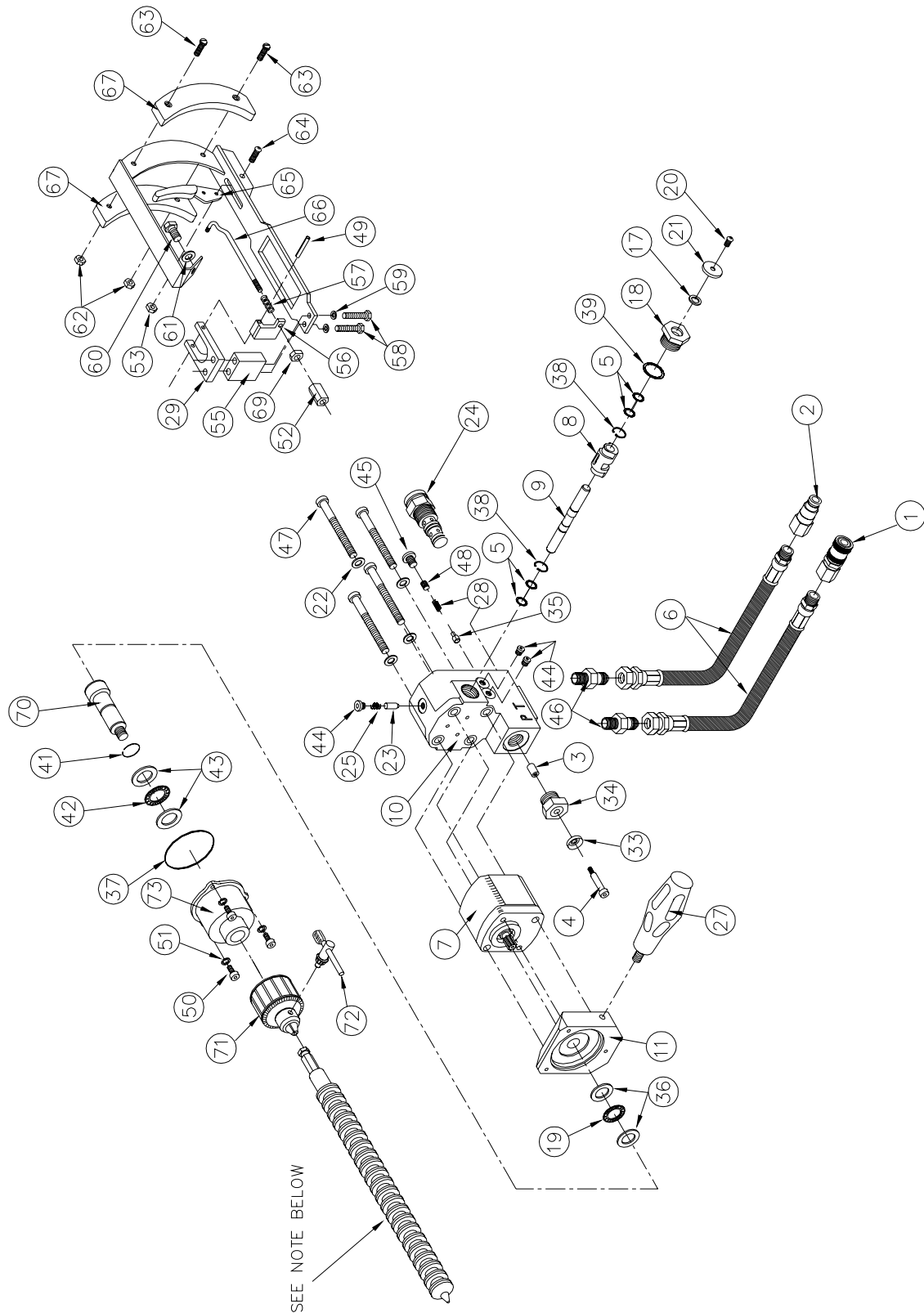
MATWELD, INC.

PHONE:(270) 444-0085

FAX:(270) 443-6180

Matweld reserves the right to change parts, features, or specifications without notice.

04525
5/8 IMPACT DRILL
rev.3 5/04



MATWELD, INC.

PHONE:(270) 444-0085

FAX:(270) 443-6180

Matweld reserves the right to change parts, features, or specifications without notice.

**04525
PARTS LIST
Rev. 3 5/04**

ITEM NO.	PART NO.	DESCRIPTION	QUANTITY
1	00145	QD coupler	1
2	00146	QD nipple	1
3	00412	locking pin	1
4	00414	1/4x1" shoulder bolt	1
5	00420	o-ring	4
6	01803	hydraulic hose	2
7	045001	1/2" impact motor	1
8	045002	reversing valve	1
9	045003	reversing valve shaft	1
10	045004	valve manifold	1
11	045005	motor adaptor	1
16	045010	hammer case w/bushing	2
17	045012	wiper seal	2
18	045013	gland nut	1
19	045014	thrust bearing	1
20	045017	12-24 x 3/8" flat head ms	2
21	045018	reversing valve collar	2
22	045019	valve body washer	4
23	045020	reversing valve locator	1
24	045021	trigger valve	1
25	045023	guide spring	1
27	045028	side handle	1
28	045030	spring	1
29	045031	trigger mount	1
33	045036	bellows seal	1
34	045037	guide bushing	1
35	045040	relief poppet	1
36	045041	bearing race	2
37	045042	o-ring	1
38	RE-037	3/8 ext. retaining ring	2
39	045043	o-ring	2
41	045047	thrust ring lock	1
42	045048	anvil thrust bearing	1
43	045049	anvil bearing race	2
44	231P-02	#2 str. thrd. sock. plug	4
45	231P-04	#4 str. thrd. sock. plug	1
46	2404-06-04	adaptor 1/4 mpx 3/8 mj	2
47	A5470	5/16-18 x 3/14 shcs	4
48	A5625	5/16-24 x 1/4 set screw	1
49	A6065	5/32 x 1-1/4 spring pin	1
50	A6550	10-24 x 5/8 shcs	3
51	A6800	#10 lock washer	3
52	045064	trigger spacer	1
53	A6699	10-24 nylock nut	1
54	045062	"D" handle assembly	1
55	045057	spacer block	1
56	045063	trigger actuator	1
57	045065	trigger spring	1
58	A1007	1/4-20 x 2-1/4 gr. 5 zp	2
59	A2190	1/4 flat washer	2
60	A1021	5/16-18 x 1/2 gr 5 zp	1
61	A2191	5/16 flat washer	1
62	A6749	10-24 hex nut	2
63	A6326	10-24 x 1-1/4 slotted bolt	2
64	A6330	10-24 x 1 bhcs	1
65	045061	trigger	1
66	045060	trigger rod	1
67	045059	handle grip plate	2
69	A6750	10-32 machine nut	1
70	045021	chuck adaptor	1
71	045098	drill chuck 5/8"	1
72	045023	chuck key	1
73	045202	front-case drill	1

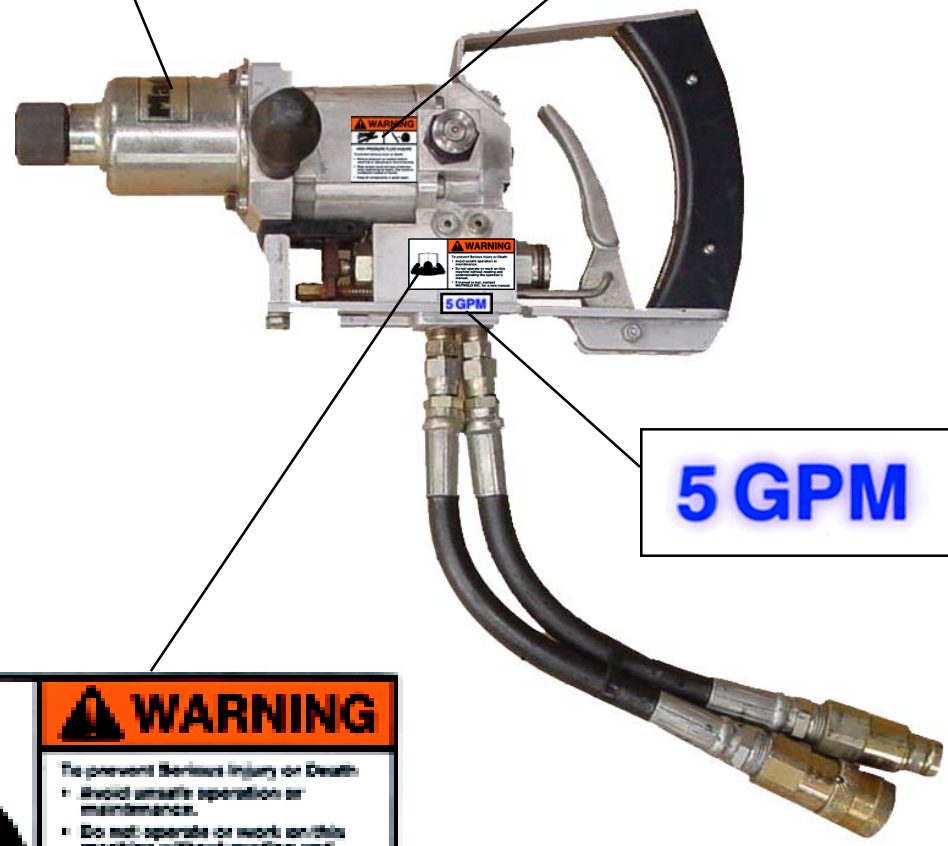
MATWELD, INC.

PHONE:(270) 444-0085

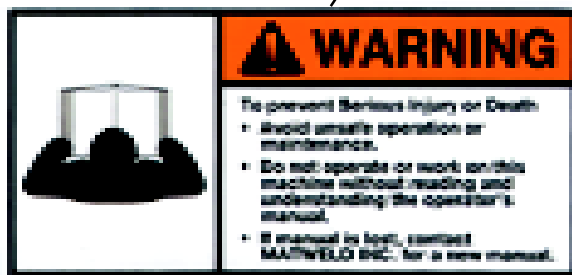
FAX:(270) 443-6180

Matweld reserves the right to change parts, features, or specifications without notice.

DECAL LEGEND:



5 GPM



DCU-1001

LIMITED WARRANTY

MATWELD, INC., PADUCAH, KY., WARRANTS TO THE ORIGINAL PURCHASE OF THIS PRODUCT THAT THE PRODUCT WILL BE FREE FROM DEFECTS IN MATERIAL AND WORKMANSHIP FOR THE PERIOD OF ONE (1) YEAR AFTER THE DELIVERY OF SUCH PRODUCT TO THE CUSTOMER. OTHER EQUIPMENT AND PARTS USED, BUT NOT MANUFACTURED BY MATWELD INC. ARE COVERED DIRECTLY BY THE WARRANTY OF THE MANUFACTURER OF THOSE PRODUCTS. PROOF OF PURCHASE MUST BE DOCUMENTED INCLUDING REFERENCE TO A SERIAL NUMBER LOCATED ON EACH TOOL. THE PURCHASER'S ONLY REMEDIES UNDER THIS LIMITED WARRANTY SHALL BE LIMITED AT MATWELD'S SOLE OPTION TO THE FOLLOWING: REPAIR, REPLACEMENT OR REFUND OF THE PURCHASE PRICE OF THE DEFECTIVE PRODUCTS. EACH OF THESE REMEDIES REQUIRES TIMELY NOTIFICATION OF THE DEFECT IN THE PRODUCT AND SUBSTANTIATION THAT THE PRODUCT HAS BEEN PROPERLY STORED, MAINTAINED AND USED. MATWELD'S OBLIGATIONS HEREUNDER EXTEND ONLY TO THE PURCHASER OF THE PRODUCT AND NOT TO ANY THIRD PARTY.

AS A CONDITION PRECEDENT TO MATWELD'S OBLIGATION HEREUNDER, THE DEFECTIVE PRODUCT MUST NOT HAVE BEEN ALTERED OR MODIFIED WITHOUT THE EXPRESS WRITTEN APPROVAL OF MATWELD, INC. THE PRODUCT MUST NOT HAVE BEEN SUBJECTED TO DELIBERATE DAMAGE, SHIPPING DAMAGE, NEGLIGENCE, TAMPERING BY UNAUTHORIZED PERSONNEL OR DAMAGE BY IMPROPER USE, STORAGE OR MAINTENANCE. SERIAL NUMBERS MUST NOT HAVE BEEN ALTERED, DEFACED OR REMOVED. SUCH ACTION VOIDS LIMITED WARRANTY.

EXCLUSIONS TO LIMITED WARRANTY

THIS LIMITED WARRANTY IS EXCLUSIVE AND IS IN LIEU OF ANY OTHER WARRANTY, WRITTEN OR ORAL, EXPRESSED OR IMPLIED, INCLUDING, WITHOUT LIMITATION, ANY IMPLIED WARRANTY OR MERCHANTABILITY OR FITNESS FOR A PARTICULAR PURPOSE.

LIMITED WARRANTY DOES NOT COVER NORMAL WEAR AND TEAR ITEMS SUCH AS FILTERS, HOSES, COUPLERS, BITS, SOCKETS, AUGERS, AND BATTERIES.

LIMITATION OF LIABILITY

EXCEPT AS PROVIDED ABOVE, MATWELD SHALL IN NO EVENT BE LIABLE OR RESPONSIBLE FOR ANY INJURY, LOSS OR DAMAGE, DIRECT, INCIDENTAL OR CONSEQUENTIAL, ARISING OUT OF THE USE OR MISUSE OR INABILITY TO USE THE PRODUCT, HOWEVER CAUSED AND ON ANY THEORY OF LIABILITY INCLUDING, WITHOUT LIMITATIONS, BREACH OF CONTRACT, TORT, (INCLUDING NEGLIGENCE OR STREET LIABILITY) AND NOT WITHSTANDING ANY FAILURE OF ANY REMEDY HEREIN OF ITS ESSENTIAL PURPOSE, EVEN IF MATWELD WAS AWARE OF THIS POSSIBILITY OF SUCH DAMAGE. MATWELD'S LIMITED WARRANTY AS SET FORTH ABOVE SHALL NOT BE ENLARGED, DIMINISHED OR AFFECTED BY, AND NO OBLIGATION OR LIABILITY SHALL ARISE OR GO OUT OF THE RENDERING OF TECHNICAL ADVICE OR SERVICE BY MATWELD OR ITS AGENTS. THE FOREGOING MAY NOT BE CHANGED EXCEPT BY WRITTEN AGREEMENT SIGNED BY AN AUTHORIZED OFFICER OF MATWELD, THE REMEDIES SET FORTH HEREIN ARE EXCLUSIVE.

IMPORTANT SAFETY NOTICE

**PLEASE OBEY
IT'S THE LAW!**

YOU MUST WEAR EYE PROTECTION. ALL HAMMER OPERATIONS REQUIRE EYE PROTECTION FOR BOTH THE USER OF THE TOOL, AND BY OTHERS WHO MAY BE EXPOSED TO THE FLYING PARTICLES. THE OCCUPATIONAL SAFETY AND HEALTH ADMINISTRATION (OSHA) IS CHARGED TO ENFORCE THE MANDATED CODE OF FEDERAL REGULATIONS GOVERNING THE USE OF EYE PROTECTION DURING HAMMERING OPERATIONS.

1. NEVER USE A MODIFIED, DAMAGED, WELDED, ABUSED, OR WORN HAMMER ACCESSORY TOOL.
2. USE ACCESSORY TOOL **ONLY** WITH THE HYDRAULIC TOOL IT IS DESIGNED FOR.
3. NEVER STRIKE ACCESSORY WITH ANY HAND HELD INSTRUMENT AND BE CAREFUL DURING TRANSPORT AND MOVEMENT NOT TO STRIKE THE TOOL AGAINST ANOTHER HARDENED SURFACE.
4. MAKE SURE THAT THE ACCESSORY IS PROPERLY SECURED WITH THE DESIGNED RETAINER. THE RETAINER SHOULD NEVER BE USED IF IT IS DAMAGED OR WORN.
5. DO NOT COME IN PHYSICAL CONTACT WITH THE WORKING END OF AN ACCESSORY DURING OPERATION OF THE HAMMER. ALWAYS WEAR SAFETY BOOTS AND APPAREL DURING HAMMERING OPERATIONS.
6. INSPECT SHANKS AND ADAPTERS DAILY AND REPLACE IF ANY INDICATIONS OF FATIGUE OR WEAR ARE FOUND.
7. NEVER LEAN ON TOOL OR USE IT FOR PRYING.

**ALL OF THE ABOVE
SHOULD BE REVIEWED
WITH AND UNDERSTOOD
BY THE END USER OF
THIS PRODUCT!**

CUSTOMER INFORMATION:

Name _____

Company _____

Serial # of your Matweld tool _____

(Upon receiving your Matweld tool, make sure to list serial number above so that a good record is kept for order information.)

MATWELD HYDRAULIC TOOL LIST

*All Matweld Hydraulic Tools operate at
5 or 10 GPM @ 2000 PSI*

POWER UNITS:

07000 – HYDRA POWERED MODULAR SYSTEM

02900 – DIESEL 1-10 GPM OR 2-5 GPM

(OPTIONAL CATALYTIC EXHAUST AND/OR MSHA CERTIFIED)

00100 – GASOLINE 1-10 GPM OR 2-5 GPM

02050 – GASOLINE 1-5 GPM

05500 – TWIN POWER DUAL CIRCUIT UNIT 1-10 GPM OR 2-5 GPM & 5000 WATT GENERATOR

TRACK TOOLS:

01600A – 1” IMPACT WRENCH

04500D – ½” IMPACT DRILL

00800A – 16” RAIL SAW

03900A – REVERSING RAIL SAW

01100 – SPIKE PULLER

01300A – TIE TAMPER

01400 – SPIKE DRIVER

01500 – RAIL DRILL

01000 – CHAIN SAW

03500 – SELF FEED RAIL DRILL

GRINDERS:

04600 & 04650– STRAIGHT STONE CW & TRIGGER VERSION

04700 & 04750 – STRAIGHT STONE CCW & TRIGGER VERSION

04800 & 04850 – CUPSTONE & TRIGGER VERSION

00700 – RAIL SURFACING GUIDE

02400 – 10” OR 14” FROG AND SWITCH GRINDER

05900 – FROG/PROFILE GRINDER - ON/OFF FLOW CONTROL

05950 – FROG/PROFILE GRINDER - SAFETY TRIGGER

06000 – PROFILE GRINDER

05400 – 05400 ANGLE GRINDER

OTHER PRODUCTS:

HYDRAULIC MANIFOLDS

HYDRAULIC TEST GAUGES

HOSE REELS

HYDRAULIC HOSES

ACCESSORIES

MATWELD, INC.

PHONE:(270) 444-0085

FAX:(270) 443-6180

Matweld reserves the right to change parts, features, or specifications without notice.