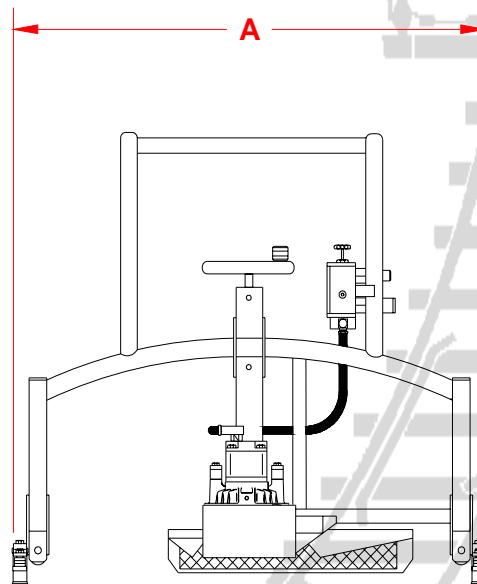
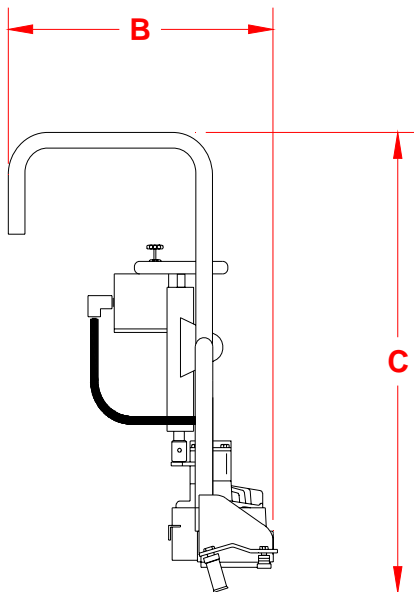


**06000 PROFILE GRINDER  
 06050 TRIGGER VERSION**

The Matweld Profile Grinder is a lightweight, precision grinding machine. The grinder is designed specifically for finish grinding of field welds. The Profile Grinder will grind the top and sides of the rail to the original profile.

Optional Model No. 06050 is available with a safety trigger operating lever system.



FLOW	PRESSURE	RPM	DIMENSIONS	WEIGHT
10 gpm (38 lpm)	2000 psi (140 bar)	4000	A - 34 1/2" (876mm) B - 19 1/2" (495mm) C - 32" (813mm)	65 lbs (29 kg)

**Accessories:**

- 02199 - 6" x 3" x (5/8" Hub) Grinding Stone
- 06009 - Spark Shield

**MATWELD, INC.**

**PHONE:(270) 444-0085**

**FAX:(270) 443-6180**

*Matweld reserves the right to change parts, features, or specifications without notice. 09/09*

**MATWELD, INC.**

**PHONE:(270) 444-0085**

**FAX:(270) 443-6180**

*Matweld reserves the right to change parts, features, or specifications without notice.*

## **GENERAL SAFETY PRECAUTIONS:**

TOOL OPERATORS AND MAINTENANCE PERSONNEL MUST ALWAYS COMPLY WITH THE SAFETY PRECAUTIONS GIVEN IN THIS MANUAL, AND WITH ALL STICKERS AND TAGS ATTACHED TO THE TOOL AND HOSE. ALL SAFETY PRECAUTIONS ARE GIVEN FOR YOUR SAFETY. READ TO UNDERSTAND AND FOLLOW ALL SAFETY, MAINTENANCE AND OPERATION INSTRUCTIONS BEFORE YOU USE OR MAINTAIN THE TOOL. REVIEW THE MANUAL DAILY BEFORE USING THE TOOL. IN ADDITION, FOLLOW ALL SAFETY GUIDELINES GIVEN YOU BY YOUR SUPERVISOR. DO NOT USE THE TOOL IF YOU HAVE ANY QUESTIONS ABOUT THE OPERATION, SAFETY OR MAINTENANCE OF THIS TOOL. FAILURE TO FOLLOW THESE INSTRUCTIONS CAN RESULT IN PERSONAL INJURY OR EQUIPMENT DAMAGE.

MATWELD HAS NO CONTROL OVER TOOL USE OR OPERATION ONCE IT LEAVES THE MATWELD PLANT. MATWELD HAS NO CONTROL OVER OPERATOR OR MAINTAINER SELECTION. THE CUSTOMER MUST ASSUME RESPONSIBILITY FOR THE TOOL'S SUITABILITY FOR A PARTICULAR FUNCTION, FOR ANYONE USING THE TOOL OR MAINTAINING THE TOOL REGARDING THEIR FITNESS TO USE THE TOOL OR REPAIR THE TOOL, UNDERSTANDING OF THE OPERATION AND SAFETY AND MAINTENANCE MANUAL, INTELLIGENCE TO USE GOOD JUDGMENT NECESSARY TO WORK SAFELY AND EFFICIENTLY WITHOUT ENDANGERING THEMSELVES OR BYSTANDERS IN THE WORK AREA.

- DO NOT OPERATE THE TOOL UNTIL YOU HAVE BEEN THOROUGHLY AND PROPERLY TRAINED OR UNDER THE SUPERVISION OF AN INSTRUCTOR.
- CHECK POWER SOURCE DAILY TO DETERMINE IF CORRECT FLOW AND PRESSURE ARE AVAILABLE. NEVER EXCEED FLOWS OR PRESSURES FOR THE TOOL BEING USED. PERSONAL INJURY OR DAMAGE TO THE TOOL CAN RESULT.
- OPERATORS MUST CLEAR THE WORK AREA OF NONESSENTIAL PERSONNEL. FLYING DEBRIS CAN CAUSE SERIOUS INJURY.
- THE OPERATOR MUST BE FAMILIAR WITH ALL PROHIBITED WORK AREAS SUCH AS UNSAFE GRADES, POOR FOOTING AREAS AND OVERHEAD HAZARDS.
- MAINTAIN BALANCE AND PROPER FOOTING AT ALL TIMES. NEVER OVERREACH TO THE EXTENT THAT A BROKEN PART OR SUDDEN MOVEMENT OF THE TOOL CAN CAUSE YOU TO LOSE YOUR BALANCE AND FALL, OR CAUSE INJURY TO YOUR SELF OR SOMEONE ELSE.

- WHEN WORKING NEAR ELECTRICAL CONDUCTORS, ALWAYS ASSUME THAT THE CONDUCTORS ARE ENERGIZED AND THAT HOSES AND CLOTHING CAN CONDUCT HARMFUL ELECTRICITY. USE HOSES LABELED AND CERTIFIED AS NONCONDUCTIVE.
- DO NOT OPERATE THE TOOL AT EXCESSIVE FLUID TEMPERATURES OPERATOR DISCOMFORT AND POTENTIAL BURNS CAN RESULT AT HIGH OIL TEMPERATURES.
- NEVER WEAR LOOSE CLOTHING THAT CAN GET ENTANGLED IN THE WORKING PARTS OF THE TOOLS OR BE CARELESS WITH HANDS, FEET OR OTHER BODY PARTS AROUND THE WORKING PARTS OF THE TOOLS. HYDRAULIC TOOLS EXERT HIGH TORQUE AND FORCE AND CAN CAUSE SERIOUS INJURY OR DEATH IF IMPROPERLY USED.
- TO AVOID PERSONAL INJURY OR EQUIPMENT DAMAGE, ALL TOOL REPAIR, MAINTENANCE OR SERVICE MUST ONLY BE PERFORMED BY AUTHORIZED AND PROPERLY TRAINED PERSONNEL.
- ALWAYS WEAR SAFETY EQUIPMENT SUCH AS OIL INJECTION RESISTANT WORK GLOVES, SAFETY GLASSES, SAFETY BOOTS, EAR PROTECTION AND OTHER SAFETY APPAREL DICTATED BY YOUR SUPERVISOR APPLICABLE FOR THE JOB YOU ARE DOING AND THE TOOL YOU ARE USING.
- DO NOT CLEAN INSPECT OR REPAIR THE TOOL WHILE CONNECTED TO THE POWER SOURCE. ACCIDENTAL ENGAGEMENT OF THE TOOL CAN CAUSE SERIOUS PERSONAL INJURY.
- OIL INJECTION HAZARD EXISTS WITH THIS TOOL. OIL INJECTION IS A CONDITION WHERE HYDRAULIC OIL IS INJECTED UNDER THE SKIN FROM PRESSURE IN THE LINE. ALWAYS WEAR GLOVES AND REPAIR ANY LEAKS IMMEDIATELY. NEVER CARRY A TOOL BY THE HOSES.
- DO NOT USE DAMAGED EQUIPMENT. IMMEDIATELY REPLACE ANY DAMAGED HOSES, FITTINGS, OR OTHER COMPONENTS SHOWING WIRE BRAID, NICKS, CUTS, DAMAGE OR ABRASIONS. FAILURE TO DO SO MAY RESULT IN EQUIPMENT DAMAGE AND / OR PERSONAL INJURY OR DEATH.
- CLEAN UP ANY OIL OR FLUID SPILLS IMMEDIATELY.



## 06000 PROFILE GRINDER

### SAFETY PRECAUTIONS:

1. **ALWAYS** WEAR PROTECTIVE EQUIPMENT SUCH AS GLOVES, SAFETY GLASSES, EAR PROTECTION, SAFETY SHOES AND OTHER REQUIRED SAFETY EQUIPMENT.
2. **DO NOT** WEAR CLOTHING WHICH MAY BECOME ENTANGLED IN THE TOOL.
3. **ALWAYS** KEEP WORK AREA FREE OF TOOLS OR ANY OTHER OBJECTS WHICH MAY IMPAIR SOUND FOOTING.
4. **CAUTION** OIL INJECTION HAZARD EXISTS WITH THIS TOOL. OIL INJECTION IS A CONDITION WHERE THE HYDRAULIC OIL IS FORCED UNDER THE SKIN THROUGH PRESSURE IN THE LINE. ALWAYS WEAR GLOVES AND REPAIR LEAKS IMMEDIATELY.
5. **NEVER** CHANGE STONES WITH THE POWER SOURCE VALVE(S) IN THE "ON" POSITION, TURN THE POWER SOURCE "**OFF**".
6. **NEVER** ATTEMPT TO CARRY THE GRINDER WITH THE POWER SOURCE VALVE(S) IN THE "**ON**" POSITION, TURN THE POWER SOURCE "**OFF**".
7. **NEVER** TOUCH OR TRY TO STOP A MOVING STONE.
8. **ALWAYS** CHECK THE WORK AREA FOR ANY TRASH, WHICH MAY IGNITE FROM SPARKS, WELD SPLATTER OR SLAG.
9. **ALWAYS** CHECK THE AREA FOR SMOLDERING TIES OR TRASH BEFORE LEAVING THE SITE.
10. WHEN CHANGING STONES, FOLLOW ALL GRINDING STONE MANUFACTURES INSTRUCTIONS FOR SAFETY AND OPERATION. USE ONLY STONES THAT COMPLY WITH ANSI STANDARDS. BEFORE USING, RUN NEW GRINDING STONE FOR ONE MINUTE AT FULL SPEED TO CHECK FOR DEFECTS OR VIBRATION.
11. MOST HYDRAULIC OILS HAVE A FLASH POINT OF 500 DEGREES (F). MAKE SURE HOSES ARE COMPLETELY CLEAR OF SPARKS AND HOT DEBRIS. HAVE ANOTHER PERSON STAND CLOSE TO HYDRAULIC POWER SOURCE CONTROLS TO OBSERVE OPERATION AND FOR EMERGENCY SHUTDOWN IF NECESSARY.

### OPERATIONS:

1. WITH THE TOOL TURNED "OFF", PLACE THE TOOL ON THE RAIL CAREFULLY AND ADJUST THE STONE CLEARANCE BY TURNING THE HAND WHEEL **COUNTERCLOCKWISE** TO RAISE THE STONE.
2. WITH THE POWER SOURCE IN THE "OFF" POSITION, CONNECT THE HOSES. DO NOT DRAG THE SERVICE HOSE BY PULLING WITH THE TOOL. LOOP THE SERVICE HOSE IN THE WORK AREA IN SUCH A WAY TO RELIEVE STRESS ON THE HOSE AND QUICK DISCONNECT (QD) FITTINGS WHILE WORKING. BE AWARE OF HOSE LOCATIONS AT ALL TIMES.

CONTINUED ON NEXT PAGE.

## **06000 PROFILE GRINDER**

3. CONNECT THE TOOL TO THE POWER SOURCE.
4. TURN POWER SOURCE TO THE "ON" POSITION TO SUPPLY 10GPM TO THE TOOL.
5. THE NORMAL WORK POSITION IS TO STAND BEHIND THE WORK HANDLE FACING THE HEIGHT ADJUSTMENT WHEEL. IN THIS POSITION YOU WILL SEE THE ON/OFF VALVE (QD FITTINGS ATTACHMENT POINT) ON THE RIGHT END OF THE WORK HANDLE. THE KNOB ON TOP IS TURNED **CLOCKWISE** TO START THE GRINDER MOTOR. TURN **COUNTER CLOCKWISE** TO SHUT THE MOTOR OFF.
6. *GRASP THE WORK HANDLE FIRMLY BEFORE BEGINNING THE GRINDING OPERATION. BE SURE THE STONE IS BACKED OUT FOR CLEARANCE FROM THE RAIL. WITH THE GRINDER RUNNING, FEATHER THE STONE IN BY SLOWLY TURNING THE HEIGHT ADJUSTMENT HAND WHEEL **CLOCKWISE**. YOU WILL FEEL THE RESISTANCE AND SEE SPARKS AS THE STONE CONTACTS THE RAIL.*
7. ROLL THE GRINDER SIDE TO SIDE TRAVERSING THE SECTION OF RAIL BEING DRESSED A LITTLE AT A TIME. DO NOT ATTEMPT TO REMOVE TOO MUCH MATERIAL IN ONE PASS. KEEP THE TOOL MOVING TO PREVENT BURNING OR OVER GRINDING THE RAIL.

### **SIDE RAIL GRINDING:**

1. THE PROFILE GRINDER CAN BE POSITIONED WITH THE FRAME AND GRINDING HEAD LAID OVER IN A HORIZONTAL PLANE TO ALLOW REMOVAL OF ROLL OVER OR OTHERWISE DRESSING THE SIDE OF THE RAIL HEAD.
2. WITH THE POWER SOURCE TURNED "OFF", BACK THE STONE UP **COUNTERCLOCKWISE** ON THE HEIGHT ADJUSTMENT WHEEL SEVERAL TURNS FOR CLEARANCE. LAY THE GRINDER OVER FROM THE VERTICAL POSITION TO THE HORIZONTAL POSITION.
3. TURN THE POWER "ON" AND FEATHER THE STONE INTO THE RAIL WHILE ROLLING THE GRINDER IN A SIDE TO SIDE MOTION. DO NOT ATTEMPT TO REMOVE TOO MUCH MATERIAL IN ONE PASS.

### **CHANGING THE GRINDING STONE:**

1. TURN THE POWER SOURCE "OFF" AND DISCONNECT THE HOSES FROM THE TOOL. LAY THE TOOL ON IT SIDE.
2. POSITION THE TOOL FOR ACCESS TO THE BOTTOM OF THE CAST ALUMINUM DRIVE HOUSING.
3. LOCK THE DRIVE SHAFT BY DEPRESSING THE LOCKING PIN LOCATED JUST BELOW THE MOTOR ON THE CAST HOUSING.
4. IT IS RECOMMENDED TO UTILIZE A STRAP WRENCH WHEN REMOVING A WORN STONE. AGAIN THE SHAFT LOCK MUST ALSO BE ENGAGED FOR THIS OPERATION.

**MAINTENANCE:**

1. CHECK TOOL **DAILY** FOR PROPER OPERATION, LEAKS, OR DAMAGE.
2. INSPECT HOSES **DAILY**. REPLACE CUT, BURNED, OR OTHERWISE DAMAGED HOSES.
3. KEEP QUICK DISCONNECT COUPLERS **CLEAN AND LUBRICATED**.
4. USE HYDRAULIC FLUIDS THAT COMPLY WITH HTMA SPECIFICATION 5.7, THE HYDRAULIC FLUID SHOULD HAVE A VISCOSITY BETWEEN 100 AND 400 SSU (20-82 CENTISTOKES) AT THE MAXIMUM AND MINIMUM EXPECTED OPERATING TEMPERATURES. PETROLEUM BASED HYDRAULIC FLUIDS WITH ANTI-WEAR PROPERTIES AND A VISCOSITY INDEX OF OVER 140 WORK FOR A WIDE RANGE OF OPERATING CONDITIONS.

**THE FOLLOWING OILS MEET HTMA SPECIFICATION 5.7:**

AMOCO RYKON MV	CITGO A/W ALL TEMP
SUNVIS 706	MOBIL D.T.E. 13
CHEVRON EP-MV	TEXACO "RANDO" HDAZ

OTHER FLUIDS THAT MEET OR EXCEED THIS SPECIFICATION CAN BE USED.

\*SEE **COLD WEATHER OPERATION** HYDRAULIC OIL NOTE.

5. HAVE TOOL INSPECTED, AT LEAST ANNUALLY, BY MATWELD OR A MATWELD QUALIFIED SERVICE REPRESENTATIVE TO DETERMINE IF TOOL IS IN NEED OF SAFETY CHANGES OR WORN PART REPLACEMENT.
6. CONTACT MATWELD ON A PERIODIC BASIS, AT LEAST ANNUALLY, FOR SERVICE BULLETINS, SAFETY NOTICES, OR OTHER IMPORTANT INFORMATION PERTAINING TO THIS TOOL.

**COLD WEATHER OPERATION:**

HYDRAULIC SYSTEM PERFORMANCE IS AFFECT WHEN THE TEMPERATURE DROPS BELOW 50 F. THEREFORE MEASURES SHOULD BE TAKEN TO PRE-WARM TOOLS AND FLUIDS BEFORE OPERATING.



**REPAIR AND TROUBLESHOOTING:**

IF SYMPTOMS OF POOR PERFORMANCE DEVELOP, THE FOLLOWING CHART CAN BE USED AS A GUIDE TO CORRECT THE PROBLEM. WHEN DIAGNOSING PROBLEMS WITH OPERATION OF THE GRINDER, ALWAYS CHECK THAT THE HYDRAULIC POWER SOURCE IS SUPPLYING THE CORRECT HYDRAULIC FLOW AND PRESSURE, AS LISTED IN THE SPECIFICATIONS. USE A FLOW AND PRESSURE TEST GAUGE TO BE ACCURATE (MATWELD PART NO. 03600). CHECK THE FLOW WITH THE HYDRAULIC OIL TEMPERATURE AT LEAST 80 DEGREE F/27 DEGREE C.

<b>PROBLEM</b>	<b>CAUSE</b>	<b>REMEDY</b>
Grinder does not run	1. Hydraulic power source not functioning. 2. Couplers or hoses blocked. 3. Hydraulic motor failure. 4. Hydraulic lines not connected.	See general note above  locate and remove restriction inspect and repair connect lines
Grinder operates too slow	5. Hydraulic motor speed too slow. 6. High backpressure.  7. Couplers or hoses blocked. 8. Oil too hot (above 140f/60c). 9. Oil too cold (below 60f/16c). 10. Hydraulic motor worn. 11. Flow control malfunction.	See general note above.  Check for back pressure above 250 psi 17 bar. See note 2 Turn fan on. See cold weather operation of this manual. Have grinder serviced at authorized service center.
Grinder operates too fast.	12. Flow control malfunction	See note 11.

## REVIEW OF HYDRAULIC PRINCIPLES

### A. TOOL CIRCUIT

#### 1. HYDRAULIC FORMULAS:

$$\text{GPM} = \frac{\text{CID X RPM}}{231} \qquad \text{HP} = \frac{\text{GPM X PSI}}{1456.9} \times 1714 (.85)$$

Example: HP required to deliver 10 GPM at 1500 PSI.

$$\frac{10 \text{ GPM X } 1500 \text{ PSI}}{1456.9} = \frac{15000}{1456.9} = 10.3 \text{ HP}$$

(subtract back pressure for tool HP)

#### Estimated HP delivered by pump or used by tool.

GPM	PSI					
	500	1,000	1,500	2,000	2,500	3,000
3	1.03	2.06	3.09	4.12	5.15	6.18
5	1.72	3.43	5.15	6.86	8.58	10.30
10	3.43	6.86	10.3	13.70	17.20	20.60
15	5.15	10.30	15.40	20.60	25.70	30.90

#### 2. BACK PRESSURE

BACK PRESSURE MEASURED AT THE TOOL RETURN PORT MUST NOT EXCEED THE MANUFACTURERS BACK PRESSURE RATING. MOST MANUFACTURERS LIST THE MAXIMUM BACK PRESSURE FOR THEIR HYDRAULIC TOOLS AT 250 PSI. BACK PRESSURE MEASURED ON THE RETURN SIDE OF THE TOOL IS THE FORCE REQUIRED TO GET THE OIL BACK TO THE TANK. IN ALMOST ALL CASES THE LOWER THE BACK PRESSURE THE BETTER THE TOOL PERFORMANCE. FIRST, THE BACK PRESSURE IS SUBTRACTED FROM THE MAXIMUM TOOL PRESSURE TO ARRIVE AT A MAXIMUM TOOL OPERATING PRESSURE. FOR EXAMPLE, TOOLS WITH 2000 PSI OPERATING PRESSURE ARE INSTALLED ON A SYSTEM WITH 250 PSI BACK PRESSURE. THIS LEAVES 1750 PSI AS A MAXIMUM TOOL PRESSURE. IMAGINE A SYSTEM WITH 500 PSI BACK PRESSURE. 2000 MINUS 500 PSI BACK PRESSURE LEAVES ONLY 1500 PSI FOR THE TOOL. SECOND, TOOLS ARE DESIGNED FOR PRESSURE TO BUILD ON THE PRESSURE SIDE OF THE TOOL. IF TOO MUCH PRESSURE BUILDS ON THE RETURN SIDE, NOT ONLY IS PERFORMANCE EFFECTED, BUT SEALS MAY BLOW. THIS IS WHY IT IS VERY IMPORTANT TO DIRECT THE FLOW INTO THE TOOL CORRECTLY. REVERSING THE HOSES TO TEST MAY RESULT IN BLOWN SEALS, DAMAGE TO THE TOOL, AND PERSONAL INJURY.

**06000**  
**PROFILE GRINDER**

**GENERAL NOTES:**

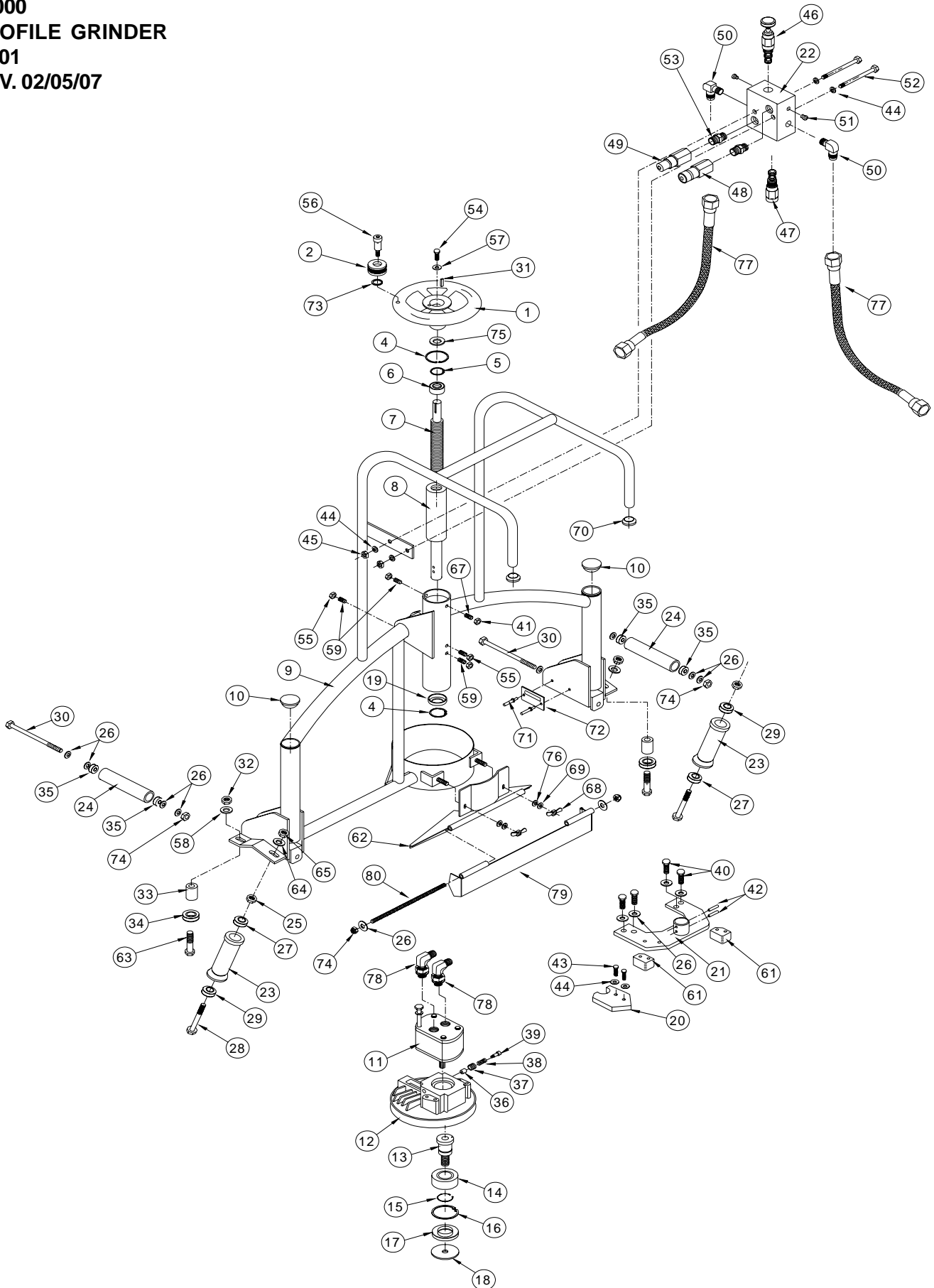
**MATWELD, INC.**

**PHONE:(270) 444-0085**

**FAX:(270) 443-6180**

*Matweld reserves the right to change parts, features, or specifications without notice.*

**06000**  
**PROFILE GRINDER**  
**02/01**  
**REV. 02/05/07**



**MATWELD, INC.**

**PHONE:(270) 444-0085**

**FAX:(270) 443-6180**

*Matweld reserves the right to change parts, features, or specifications without notice.*

**06000  
PROFILE GRINDER**

ITEM NO.	PART NO.	DESCRIPTION	QTY.
1	05919	HAND WHEEL	1
2	03930A	HAND WHEEL KNOB	1
3		OMIT	
4	00705	1 5/8 INTERNAL RET. RING	2
5	00706	3/4 EXTERNAL RET. RING	1
6	00713	HEIGHT ADJ. BEARING	1
7	05917	HEIGHT ADJ. SCREW	1
8	05916	HEIGHT ADJ. SHAFT	1
9	06001A	FRAME ASSEMBLY	1
10	05926	FRAME PLUG	2
11	00410B	MOTOR	1
12	03402	BEARING HOUSING	1
13	048001	DRIVE SHAFT	1
14	046003	DRIVE SHAFT BEARING	1
15	046005	EXTERNAL RET. RING	1
16	00403	INTERNAL RET. RING	1
17	046004	SEAL	1
18	02101	STONE FLANGE	1
19	00710	SEAL	1
20	05903	SLIDE CUSHION	1
21	05902	BEARING HOUSING BRACKET	1
22	00795	MANIFOLD	1
23	05910	HANGING ROLLER	2
24	05908	RAIL ROLLER	2
25	A2065	7/16-14 FLANGE NUT	2
26	A2191	5/16 SAE FLAT WASHER	12
27	05947	TOP HANGING ROLLER BEARING	2
28	A1075	7/16-14 x 4 HEX HEAD BOLT	2
29	05948	BOTTOM HANGING ROLLER BEARING	2
30	A1039	5/16 x 6 HEX HEAD BOLT	2
31	00806-01	3/16 SQUARE KEY	1
32	A2050	3/8-16 NYLOCK NUT	2
33	06040	5/16 SPACER	2
34	06035	RAIL BEARING	2
35	05931	TRACK ROLLER BEARING	4
36	00412	LOCKING PIN	1
37	00415	PLUG	1
38	00413	SPRING	1
39	A6910	DIA. 1/4 x 1 SHOULDER BOLT	1
40	A1025	5/16-18 x 1 3/4 HEX HEAD BOLT	4
41	A1452	5/16-18 JAM NUT	2
42	A6101	1/4 x 1 1/2 ROLL PIN	2
43	A1002	1/4 - 20 x 1 HEX HEAD BOLT	2
44	A2190	1/4 SAE FLAT WASHER	6
45	A2046	1/4-20 NYLOCK NUT	2
46	00137	ON/OFF VALVE	1
47	00796	FLOW CONTROL VALVE	1
48	00145	QUICK DISCONNECT COUPLER	1
49	00146	QUICK DISCONNECT NIPPLE	1
50	405-08-08	90 DEGREE HOSE FITTING	2
51	231P-04	#4 O-RING PLUG	2
52	A1009	1/4-20 x 2 3/4 HEX HEAD BOLT	2
53	69-08-08	1/2 NPT HEX NIPPLE	2
54	A1041	3/8-16 x 3/4 HEX HEAD BOLT	1
55	A1454	3/8-16 JAM NUT	3
56	A1481	DIA. 1/2 x 1 SHOULDER BOLT	1
57	A3860	3/8 x 1 1/4 FENDER WASHER	1
58	A2192	3/8 SAE FLAT WASHER	2
59	A5626	3/8-16 x 3/4 SET SCREW	3
60		OMIT	
61	05920	LIFT PLATE SPACER	2
62	06010A	EXTENDED SPARK SHIELD	1
63	A6365	3/8-16 x 2 1/4 BHCS	2
64	A2193	7/16 SAE FLAT WASHER	2
65	A2052	7/16-14 NYLOCK NUT	2
67	A5624	5/16-18 x 1/2 NYLON TIP SET SCREW	2
68	A2500	5/16-18 WING NUT	2
69	A3810	5/16 LOCK WASHER	2
70	05436	HANDLE PLUG	2
71	SSB4-6S	1/8 X 3/8 SS RIVET	4
72	SERIAL TAG	SERIAL NO. TAG	1
73	05940	1/2 WAVE WASHER	1
74	A2048	5/16-18 NYLOCK NUT	2
75	A2200	3/4 x 14 GA. FLAT WASHER	1
76	A2162	5/16 USS FLAT WASHER	2
77	06020A	HOSE	2
78	06801-08-08	-08 JIC x -08 O-RING 90 ELBOW	2
79	06011A	SPARK SHIELD FLAP	1
80	06012A	HINGE ROD	1

**MATWELD, INC.**

**PHONE:(270) 444-0085**

**FAX:(270) 443-6180**

*Matweld reserves the right to change parts, features, or specifications without notice.*

06000 PROFILE GRINDER  
DECAL LEGEND:



DCL-1001



DCL-1002



DCL-1078



DCL-1016



DCL-1018



DCL-1041



DCL-1008



DCL-1007

MATWELD, INC.

PHONE:(270) 444-0085

FAX:(270) 443-6180

*Matweld reserves the right to change parts, features, or specifications without notice.*

# LIMITED WARRANTY

MATWELD, INC., PADUCAH, KY., WARRANTS TO THE ORIGINAL PURCHASE OF THIS PRODUCT THAT THE PRODUCT WILL BE FREE FROM DEFECTS IN MATERIAL AND WORKMANSHIP FOR THE PERIOD OF ONE (1) YEAR AFTER THE DELIVERY OF SUCH PRODUCT TO THE CUSTOMER. OTHER EQUIPMENT AND PARTS USED, BUT NOT MANUFACTURED BY MATWELD INC. ARE COVERED DIRECTLY BY THE WARRANTY OF THE MANUFACTURER OF THOSE PRODUCTS. PROOF OF PURCHASE MUST BE DOCUMENTED INCLUDING REFERENCE TO A SERIAL NUMBER LOCATED ON EACH TOOL. THE PURCHASER'S ONLY REMEDIES UNDER THIS LIMITED WARRANTY SHALL BE LIMITED AT MATWELD'S SOLE OPTION TO THE FOLLOWING: REPAIR, REPLACEMENT OR REFUND OF THE PURCHASE PRICE OF THE DEFECTIVE PRODUCTS. EACH OF THESE REMEDIES REQUIRES TIMELY NOTIFICATION OF THE DEFECT IN THE PRODUCT AND SUBSTANTIATION THAT THE PRODUCT HAS BEEN PROPERLY STORED, MAINTAINED AND USED. MATWELD'S OBLIGATIONS HEREUNDER EXTEND ONLY TO THE PURCHASER OF THE PRODUCT AND NOT TO ANY THIRD PARTY.

AS A CONDITION PRECEDENT TO MATWELD'S OBLIGATION HEREUNDER, THE DEFECTIVE PRODUCT MUST NOT HAVE BEEN ALTERED OR MODIFIED WITHOUT THE EXPRESS WRITTEN APPROVAL OF MATWELD, INC. THE PRODUCT MUST NOT HAVE BEEN SUBJECTED TO DELIBERATE DAMAGE, SHIPPING DAMAGE, NEGLIGENCE, TAMPERING BY UNAUTHORIZED PERSONNEL OR DAMAGE BY IMPROPER USE, STORAGE OR MAINTENANCE. SERIAL NUMBERS MUST NOT HAVE BEEN ALTERED, DEFACED OR REMOVED. SUCH ACTION VOIDS LIMITED WARRANTY.

## EXCLUSIONS TO LIMITED WARRANTY

*THIS LIMITED WARRANTY IS EXCLUSIVE AND IS IN LIEU OF ANY OTHER WARRANTY, WRITTEN OR ORAL, EXPRESSED OR IMPLIED, INCLUDING, WITHOUT LIMITATION, ANY IMPLIED WARRANTY OR MERCHANTABILITY OR FITNESS FOR A PARTICULAR PURPOSE.*

LIMITED WARRANTY DOES NOT COVER NORMAL WEAR AND TEAR ITEMS SUCH AS FILTERS, HOSES, COUPLERS, BITS, SOCKETS, AUGERS, AND BATTERIES.

## LIMITATION OF LIABILITY

EXCEPT AS PROVIDED ABOVE, MATWELD SHALL IN NO EVENT BE LIABLE OR RESPONSIBLE FOR ANY INJURY, LOSS OR DAMAGE, DIRECT, INCIDENTAL OR CONSEQUENTIAL, ARISING OUT OF THE USE OR MISUSE OR INABILITY TO USE THE PRODUCT, HOWEVER CAUSED AND ON ANY THEORY OF LIABILITY INCLUDING, WITHOUT LIMITATIONS, BREACH OF CONTRACT, TORT, (INCLUDING NEGLIGENCE OR STREET LIABILITY) AND NOT WITHSTANDING ANY FAILURE OF ANY REMEDY HEREIN OF ITS ESSENTIAL PURPOSE, EVEN IF MATWELD WAS AWARE OF THIS POSSIBILITY OF SUCH DAMAGE. MATWELD'S LIMITED WARRANTY AS SET FORTH ABOVE SHALL NOT BE ENLARGED, DIMINISHED OR AFFECTED BY, AND NO OBLIGATION OR LIABILITY SHALL ARISE OR GO OUT OF THE RENDERING OF TECHNICAL ADVICE OR SERVICE BY MATWELD OR ITS AGENTS. THE FOREGOING MAY NOT BE CHANGED EXCEPT BY WRITTEN AGREEMENT SIGNED BY AN AUTHORIZED OFFICER OF MATWELD, THE REMEDIES SET FORTH HEREIN ARE EXCLUSIVE.

**MATWELD, INC.**

**PHONE:(270) 444-0085**

**FAX:(270) 443-6180**

*Matweld reserves the right to change parts, features, or specifications without notice.*

# **CUSTOMER INFORMATION:**

Name \_\_\_\_\_

Company \_\_\_\_\_

Serial # of your Matweld tool \_\_\_\_\_

(Upon receiving your Matweld tool, make sure to list serial number above so that a good record is kept for order information.)

## **MATWELD HYDRAULIC TOOL LIST**

*All Matweld Hydraulic Tools operate at 5 or 10 GPM @ 2000 PSI*

### **POWER UNITS:**

00100K – GASOLINE POWERED (1) 10 GPM OR (2) 5 GPM CIRCUITS

02900A – DIESEL (1) 10 GPM OR (2) 5 GPM CIRCUITS

(OPTIONAL CATALYTIC EXHAUST AND/OR MSHA CERTIFIED)

05500 – TWIN POWER DUAL CIRCUIT (1) 10 GPM OR (2) 5 GPM CIRCUITS & 5000 WATT GENERATOR

02050K – GASOLINE POWERED (1) 5 GPM

03700A – ELECTRIC POWER (1) 10 GPM OR (2) 5 GPM CIRCUITS

### **GRINDERS:**

09200A – PRECISION FROG GRINDER

06000 – PROFILE GRINDER

06900 & 06900A – MULTI-PURPOSE GRINDER (TRIGGER VERSION AVAILABLE)

05900 – FROG/PROFILE GRINDER (TRIGGER VERSION AVAILABLE)

00700 – RAIL SURFACING GUIDE

04600 – STRAIGHT STONE CW ROTATION (TRIGGER VERSION AVAILABLE)

04700 – STRAIGHT STONE CCW ROTATION (TRIGGER VERSION AVAILABLE)

07500 – CHAMFER TOOL

04800 – CUP STONE GRINDER (TRIGGER VERSION AVAILABLE)

00600C – CUP STONE GRINDER

05400 – ANGLE GRINDER

05600 – BULL NOSE GRINDER

02400 – 10" OR 14" FROG AND SWITCH GRINDER

### **TRACK TOOLS:**

03900A – REVERSING RAIL SAW

05100A & 05100B – POWER WELD SHEAR

03500 – SELF FEED RAIL DRILL

01600A – 5 GPM 1" IMPACT WRENCH

04500D – 1/2" HYDRAULIC DRILL IMPACT WRENCH

08200 – TAMPER

02800 – 60 TON BRIDGE SPREADER

01200 – SPRING ANCHOR APPLICATOR

01100A – SPIKE PULLER (SINGLE, 2 STAGE & TRIGGER VERSIONS AVAILABLE)

00800A – 16" RAIL SAW

05000 – HAND PUMP WELD SHEAR

01500 – RAIL DRILL

02500 – 10 GPM 1" IMPACT WRENCH

03100C – RAIL PULLER

08300 – SPIKE DRIVER

07650 – HYDRAULIC CLIP TOOL

### **OTHER PRODUCTS:**

HYDRAULIC MANIFOLDS

HYDRAULIC TEST GAUGES

HOSE REELS

HYDRAULIC HOSES

ACCESSORIES

**MATWELD, INC.**

**PHONE:(270) 444-0085**

**FAX:(270) 443-6180**

*Matweld reserves the right to change parts, features, or specifications without notice.*