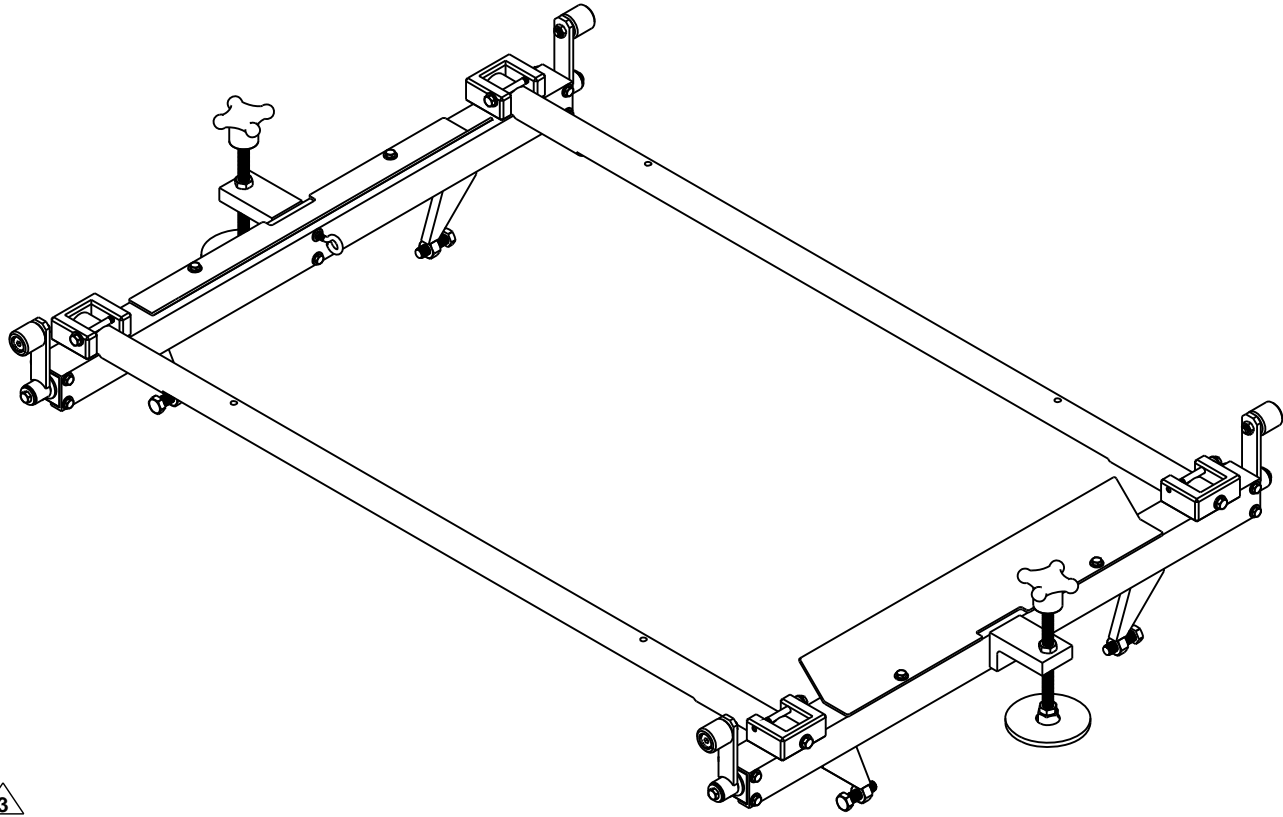


ITEM NO.	PART NUMBER	DESCRIPTION	QTY
1	09201A	BASE STRUT WELDMENT	2
2	09201-01A	BASE FRAME RAIL	2
3	09202	STRUT BEARING CAP	4
4	09203	BEARING BLOCK FEED ROD	2
5	09204	FLANGE BEARING	8
6	09205	RAIL CLAMP LH	4
7	09207	FEED HANDLE	4
8	09208	FEED ROD LH	4
9	09211-01	BASE ADJUSTMENT KNOB	2
10	09211-02	HEIGHT ADJUSTMENT SCREW	2
11	09212	BASE SUPPORT PAD	2
12	09235	FLAP GUARD	2
13	09255	1/4-20 EYEBOLT	2
14	00804-01	KEY	4
15	A1000	1/4-20 x 1/2 HEX HEAD BOLT	18
16	A1001	1/4-20 x 3/4 HEX HEAD BOLT	4
17	A1021	5/16-18 x 3/4 HEX HEAD BOLT	4
18	A1023	5/16-18 x 1 1/4 HEX HEAD BOLT	4
19	A1030	5/16-18 x 3 HEX HEAD BOLT	4
20	A1084	1/2-13 x 1 3/4 HEX HEAD BOLT	4
21	A1458	1/2-13 HEX JAM NUT	4
22	A2062	1/4-20 NUT CERT	4
23	A2162	5/16 USS FLAT WASHER	4
24	A2190	1/4 SAE FLAT WASHER	24
25	A2191	5/16 SAE FLAT WASHER	8
26	A2196	5/8 SAE FLAT WASHER	4



3

THIS SHEET SHOWS THE BASE FRAME
SHEET 1 OF 2

ISSUE NO.	REVISIONS	DATE	GENERAL NOTES	APPROVED BY	DATE	DWG. NO.	REV. NO.
3	09208 WAS 09209, 09205 WAS 09206. OMITTED (4) A2196	07/26/11	ALL ANGLES @ 90° UNLESS NOTED OTHERWISE		07/27/11	09200A	3
2	OMITTED A5590 FROM FEED HANDLE, CHANGED (4) A2191 TO A2162	05/13/10	3 PLACE DECIMAL ± .010 2 PLACE DECIMAL ± .020 ANGLES ARE ± 0.5°				
1	UPDATED BOM TO "AS BUILT"	06/15/09					

Some elements in this drawing may not be accurately represented because the SolidWorks Document Manager is not installed on your system. (PRECISION FROG GRINDER)

Matweld, Inc
PH: (270) 444-0063 FAX: (270) 443-3180
WEBSITE: www.matweld.com
E-MAIL: sales@matweld.com

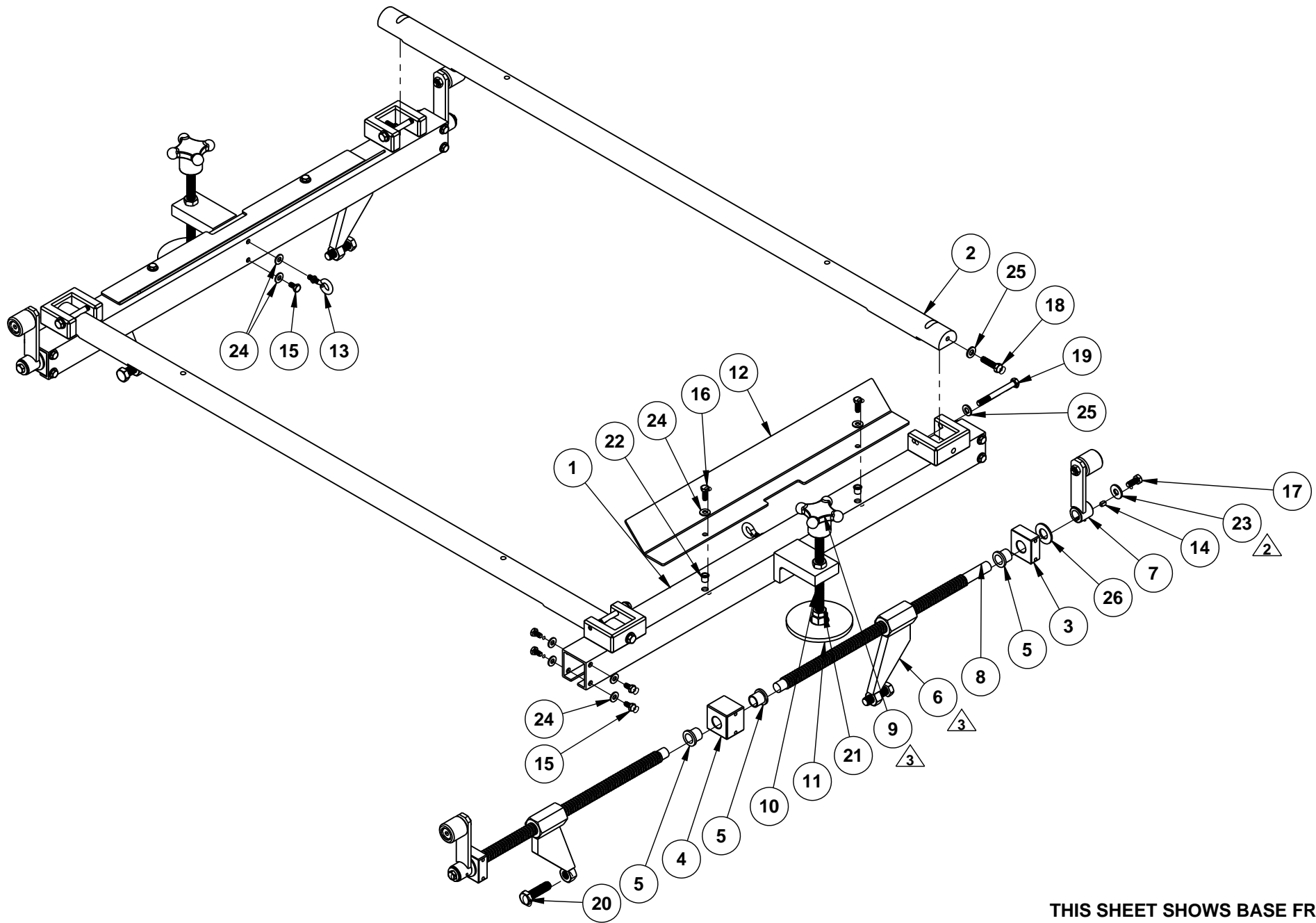
THE INFORMATION CONTAINED IN THIS DRAWING IS THE SOLE PROPERTY OF MATWELD, INC. ANY REPRODUCTION IN PART OR AS A WHOLE WITHOUT THE WRITTEN PERMISSION OF MATWELD, INC. IS PROHIBITED.

PART NAME
ASSEMBLY

MATERIAL
ASSEMBLY

DRAWN
GLP

DATE
05/11/09



THIS SHEET SHOWS BASE FRAME
SHEET 2 OF 2

Some elements in this drawing may not be accurately represented because the SolidWorks Document Manager is not installed on your system. (PRECISION FROG GRINDER)

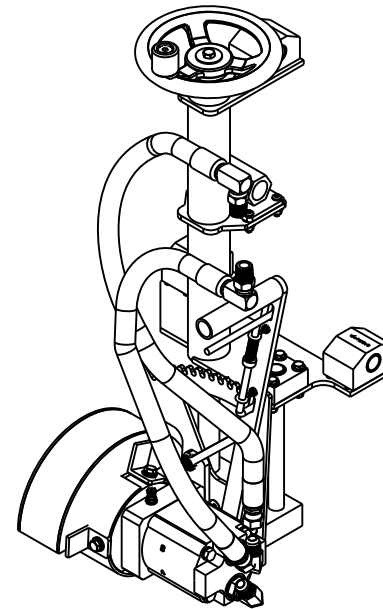
ISSUE NO.	REVISIONS	DATE	GENERAL NOTES	APPROVED BY	DATE	DWG. NO.	PART NAME	REV. NO.
3	09208 WAS 09209, 09205 WAS 09206, OMITTED (4) A2196	07/26/10	CHAMFER ALL HOLES ALL ANGLES @ 90° UNLESS NOTED OTHERWISE		07/11	09200A	PRECISION FROG GRINDER	3
2	OMITTED A5590 FROM FEED HANDLE, CHANGE (4) A2191 TO A2162	05/13/10	3 PLACE DECIMAL ± .010 2 PLACE DECIMAL ± .020 ANGLES ARE ± 0.5°					
1	UPDATED TO "AS BUILT"	06/15/09						

Matweld, Inc
PH: (270) 444-0033 FAX: (270) 443-1180
WEBSITE: www.matweld.com
E-MAIL: sales@matweld.com

THE INFORMATION CONTAINED IN THIS DRAWING IS THE SOLE PROPERTY OF MATWELD, INC. ANY REPRODUCTION IN PART OR AS A WHOLE WITHOUT THE WRITTEN PERMISSION OF OF MATWELD, INC. IS PROHIBITED.

MATERIAL: ASSEMBLY
DRAWN: GLP
DATE: 05/11/09

ITEM NO.	PART NUMBER	DESCRIPTION	QTY	ITEM NO.	PART NUMBER	DESCRIPTION	QTY
1	09218	SLIDE BEARING BLOCK	3	41	A1021	5/16-18 x 3/4 HEX HEAD BOLT	4
2	09220	HEIGHT ADJUSTMENT ASSEMBLY	1	42	A1436	5/8-11 HEAVY HEX NUT	1
3	09221	HEIGHT ADJUSTMENT SHAFT	1	43	A1452	5/16-18 HEX JAM NUT	2
4	09222	HEIGHT ADJUSTMENT SCREW	1	44	A1481	DIA. 1/2 x 1 SHOULDER BOLT	1
5	09223A	MOTOR BEARING BLOCK	1	45	A2046	1/4-20 NYLOCK NUT	8
6	09224	SUPPORT SHAFT	1	46	A2061	3/4-16 NYLOCK NUT	1
7	09228A	8" STONE GUARD	1	47	A2101	5/16 BELLVILLE WASHER	2
8	09229A	GUIDE SUPPORT BLOCK	1	48	A2102	3/8 BELLVILLE WASHER	2
9	09231	4" STONE GUARD	1	49	A2106	3/4 BELLVILLE WASHER	2
10	09237	SUPPORT SHAFT BLOCK	1	50	A2190	1/4 SAE FLAT WASHER	12
11	09238	PRESSURE/RETURN HOSES	1	51	A2191	5/16 SAE FLAT WASHER	2
12	09245	ANGLE ADJUSTMENT PLATE	1	52	A2200	14 GA. 3/4" FLAT WASHER	1
13	09246	ANGLE ADJUSTMENT HANDLE	1	53	A3810	5/16 LOCK WASHER	2
14	09247	LATCH ASSEMBLY	1	54	A3858	5/16 x 1 1/4 FENDER WASHER	2
15	09250	ANGLE LINK	1	55	A5620	5/16-18 x 1/2 SET SCREW	2
16	09251	ANGLE LINK PLATE	1	56	A5624	5/16-18 x 1/2 NYLON TIP SET SCREW	2
17	09256	FEED ROD ADJUSTMENT PLATE	1	57	A6311	5/16-18 x 3/4 FLAT HEAD BOLT	4
18	09260	PIVOT BOLT	1	58	A6350	1/4-20 x 3/4 BHCS	12
19	09262	BRONZE WASHER	1	59	A6351	1/4-20 x 1 BHCS	4
20	00402	FLANGE	2	60	A6910	DIA. 1/4 x 1 SHOULDER BOLT	1
21	00403	INTERNAL RETAINING RING	1	61	A6915	DIA. 5/16 x 3/8 SHOULDER BOLT	2
22	00410B	TOP PORT MOTOR	1	62	A6926	DIA. 3/8 x 3/8 SHOULDER BOLT	1
23	00412	LOCKING PIN	1	63	A6699	#10-24 NYLOCK NUT	2
24	00413	SPRING	1				
25	00415	PLUG	1				
26	00705	1 5/8 INTERNAL RETAINING RING	2				
27	00706HD	3/4 HD EXTERNAL RETAINING RING	1				
28	00709	SEALING WASHER	1				
29	00710	OIL SEAL	1				
30	00713	HEIGHT ADJUSTMENT BEARING	1				
31	00806-01	3/16 SQ. KEY	1				
32	03930A	DISCONNECT CRANK HANDLE KNOB	1				
33	046003	DRIVE SHAFT BEARING	1				
34	046004	OIL SEAL	1				
35	046005	EXTERNAL RETAINING RING	1				
36	047001	CCW DRIVE SHAFT	1				
37	05919	HAND WHEEL	1				
38	05940	1/2 WAVE WASHER	1				
38	515-08-10	-08 JIC x -10 O-RING 90 ELBOW	2				
40	A1005	1/4-20 x 1 3/4 HEX HEAD BOLT	4				



ISSUE NO.	REVISIONS	DATE
	REVISION	
4	PART WAS A6916, REMOVED (6) A2101	03/17/11
3	ADDED 00709	08/18/10
2	09256 WAS 09257	07/26/10
1	PLACED DRAWING ON BORDER	05/18/10

DEBURR AND BREAK ALL SHARP EDGES	ENG.	GLP	03/17/11
TOLERANCES UNLESS OTHERWISE SPECIFIED	PURCH.		
3 PLACE DECIMAL ± .010	Q.A.		
2 PLACE DECIMAL ± .020	MGMNT.		
ANGLES ARE ± 0.5°			

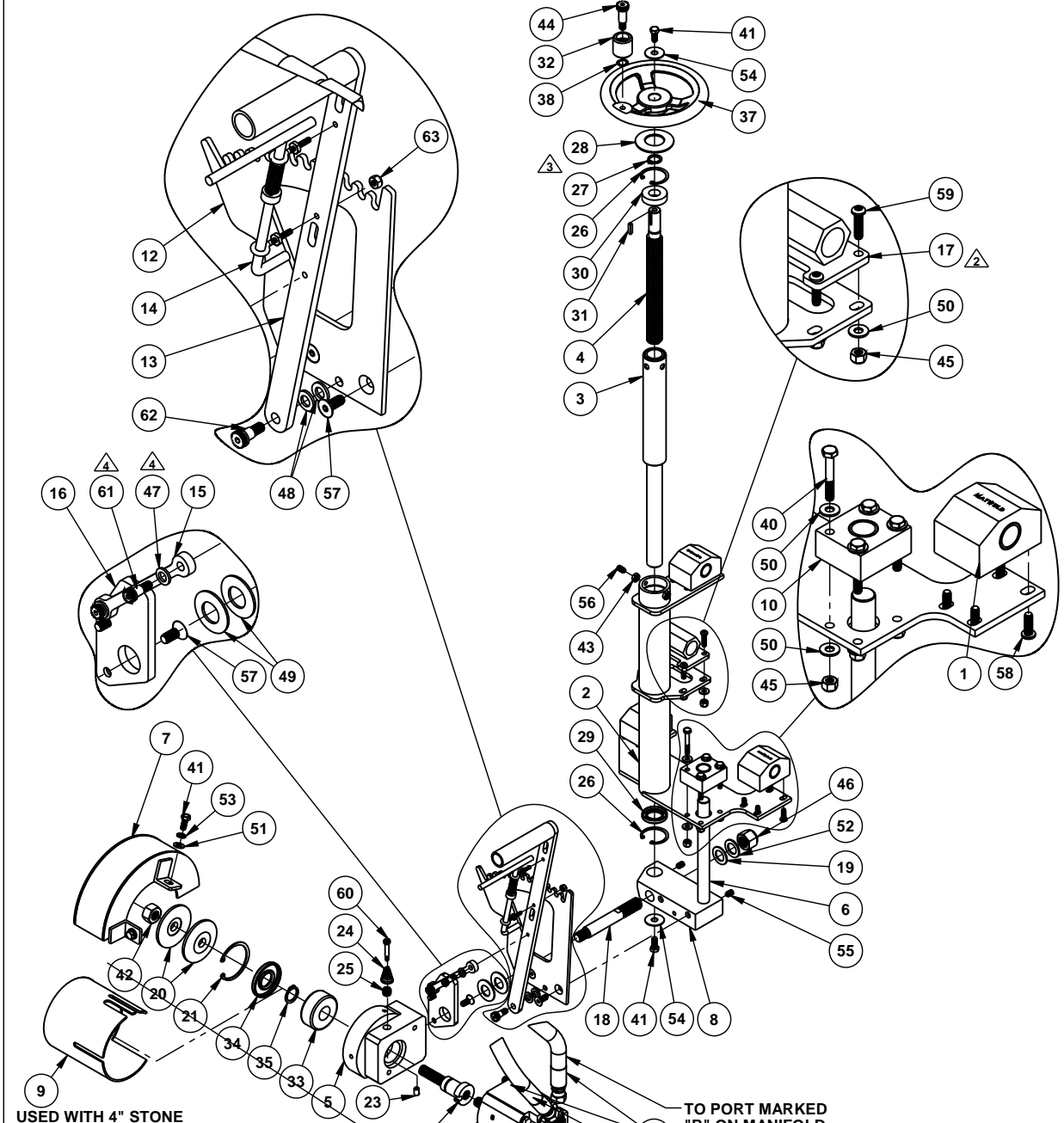
THIS SHEET SHOWS GRINDER HEAD

SHEET 1 OF 2

Some elements in this drawing may not be accurately represented because the SolidWorks Document Manager is not installed on your system. (more...)

Matweld, Inc.
 09200A
 THE INFORMATION CONTAINED IN THIS DRAWING IS THE SOLE PROPERTY OF MATWELD, INC. ANY REPRODUCTION IN PART OR AS A WHOLE WITHOUT THE WRITTEN PERMISSION OF OF MATWELD, INC. IS PROHIBITED.

PRECISION FROG GRINDER		DRAWN	DATE
ASSEMBLY		GLP	05/26/09



USED WITH 4" STONE

TO PORT MARKED "B" ON MANIFOLD

TO PORT MARKED "A" ON MANIFOLD

POSITION MOTOR WITH LETTER "A" IN THIS DIRECTION

THIS SHEET SHOWS GRINDER HEAD SHEET 2 OF 2

ISSUE NO.	REVISIONS	DATE
	REVISION	
4	PART WAS A6916, REMOVED (6) A2101	03/17/11
3	ADDED 00709	08/18/10
2	09256 WAS 09257	07/26/10
1	PLACED DRAWING IN BORDER	05/18/10
	OTHER NOTES	
	DEBURR AND BREAK ALL SHARP EDGES	ENG. GLP 08/18/10
	TOLERANCES UNLESS OTHERWISE SPECIFIED	PURCH.
	3 PLACE DECIMAL ± .010	Q.A.
	2 PLACE DECIMAL ± .020	MGMNT.
	ANGLES ARE ± 0.5°	

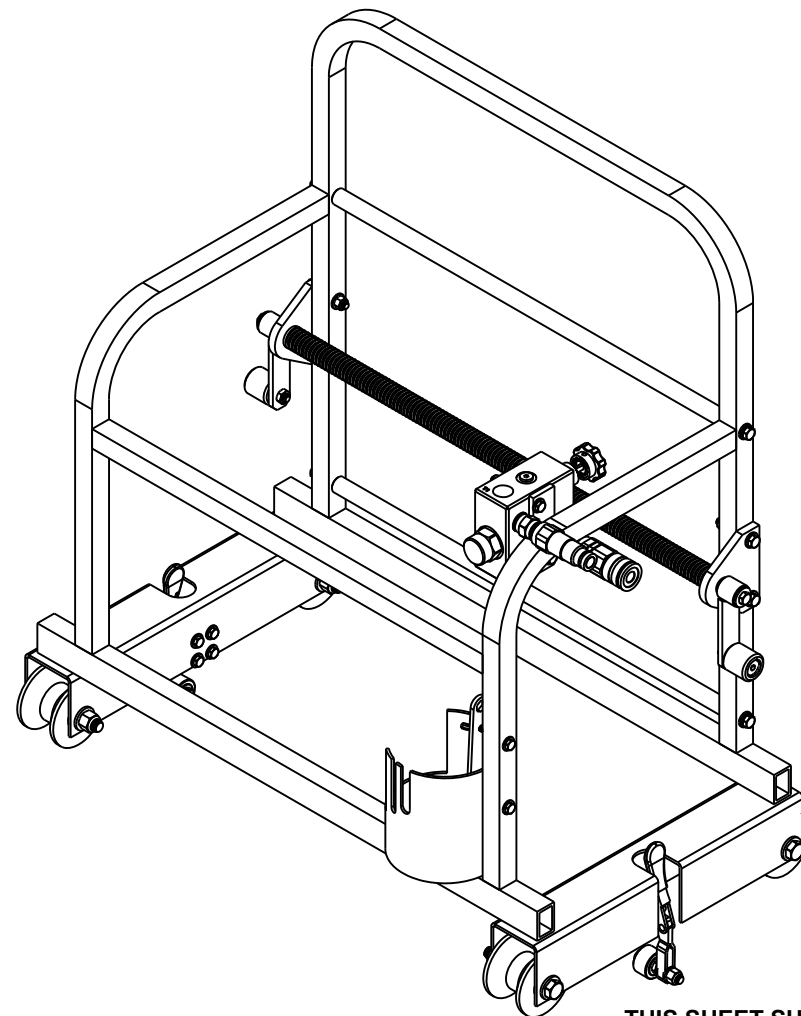
Matweld, Inc.
 09200A
 THE INFORMATION CONTAINED IN THIS DRAWING IS THE SOLE PROPERTY OF MATWELD, INC. ANY REPRODUCTION IN PART OR AS A WHOLE WITHOUT THE WRITTEN PERMISSION OF OF MATWELD, INC. IS PROHIBITED.

PRECISION FROG GRINDER
 ASSEMBLY
 DRAWN DATE
 GLP 5/26/09

Some elements in this drawing may not be accurately represented because the SolidWorks Document Manager is not installed on your system. (more...)

ITEM NO.	PART NUMBER	DESCRIPTION	QTY	ITEM NO.	PART NUMBER	DESCRIPTION	QTY
1	09204	FLANGE BEARING	2	34	A2050	3/8-16 NYLOCK NUT	2
2	09207	FEED HANDLE	2	35	A2054	1/2-13 NYLOCK NUT	4
3	09213	FLANGED ROLLER WHEEL	4	36	A2162	5/16 USS FLAT WASHER	2
4	09214	GRINDER FRAME	1	37	A2190	1/4 SAE FLAT WASHER	24
5	09215	FEED ROD SUPPORT BRACKET	2	38	A2191	5/16 SAE FLAT WASHER	12
6	09216	CROSS FEED ROD	1	39	A2194	1/2 SAE FLAT WASHER	8
7	09217	SLIDE ROD	2	40	A2499	1/4-20 WING NUT	2
8	09219	GUIDE WHEEL	2	41	A3810	5/16 LOCK WASHER	4

9	09234	TOGGLE CLAMP	2
10	09236	SPACER BLOCK	2
11	00109	RAIL WHEEL BEARING	8
12	00137	CONTROL VALVE w/KNOB	1
13	00138A	REPLACEMENT KNOB ONLY	1
14	00145	FEMALE QUICK DISCONNECT	1
15	00146	MALE QUICK DISCONNECT	1
16	00795	FLOW CONTROL MANIFOLD	1
17	00796	FLOW REGULATOR VALVE	1
18	00806-01	3/16 SQ. KEY	2
19	06910	OPEN END WRENCH	1
20	231P-04	-04 O-RING PLUG	2
21	69-08-08	1/2 NPT x 1/2 NPT HEX NIPPLE	2
22	A1004	1/4-20 x 1 HEX HEAD BOLT	8
23	A1006	1/4-20 x 2 HEX HEAD BOLT	2
24	A1009	1/4-20 x 2 3/4 HEX HEAD BOLT	2
25	A1021	5/16-18 x 3/4 HEX HEAD BOLT	2
26	A1024	5/16-18 x 1 1/2 HEX HEAD BOLT	4
27	A1026	5/16-18 X 2 HEX HEAD BOLT	4
28	A1047-FULL	3/8-16 x 2 1/4 FULL THREAD HEX HEAD BOLT	2
29	A1092	1/2-13 x 3 3/4 HEX HEAD BOLT	4
30	A1450	1/4-20 HEX JAM NUT	2
31	A1454	3/8-16 HEX JAM NUT	2
32	A2046	1/4-20 NYLOCK NUT	10
33	A2048	5/16-18 NYLOCK NUT	4



THIS SHEET SHOWS GRINDER BODY

SHEET 1 OF 2

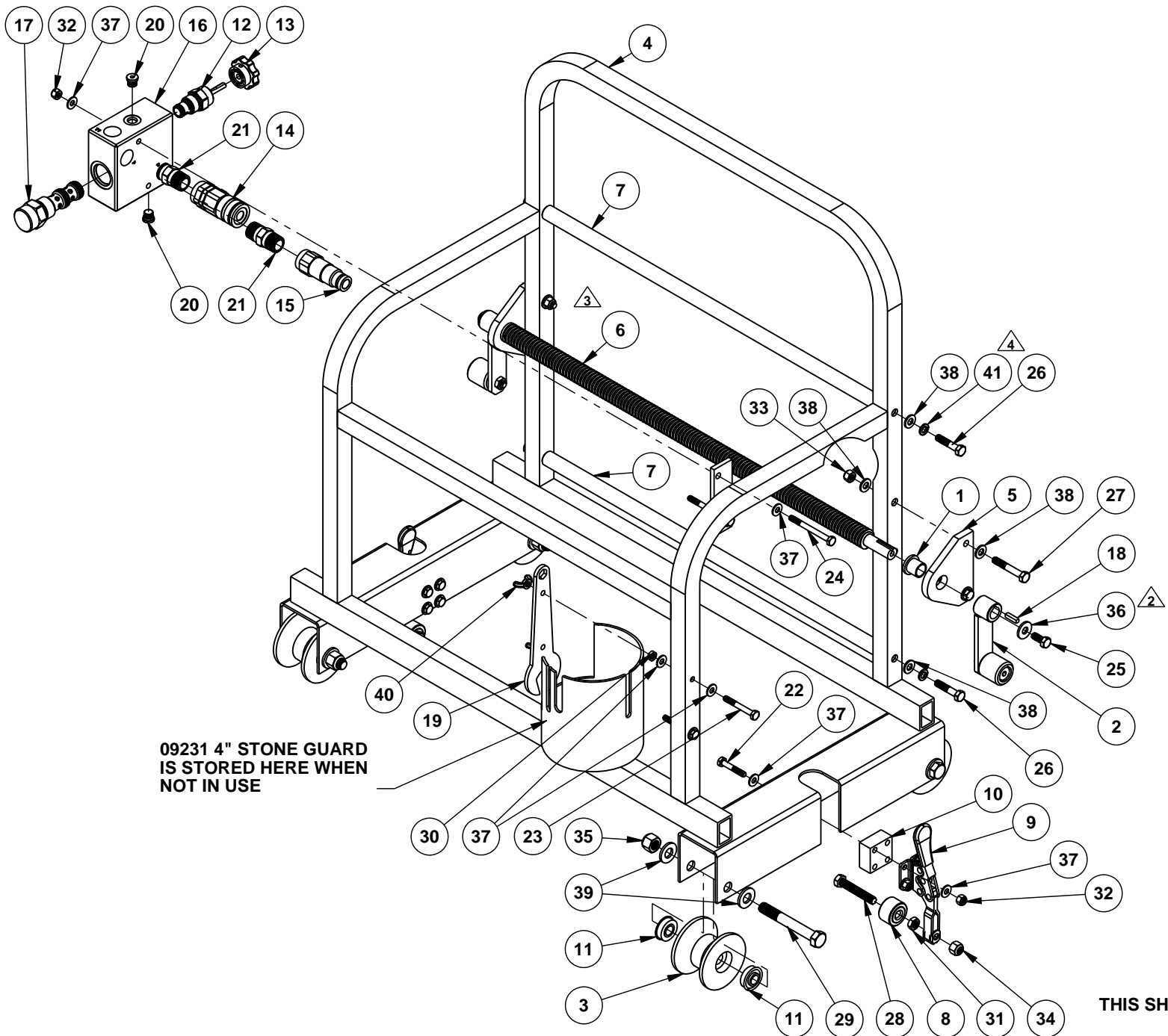
ISSUE NO.	REVISIONS	DATE	GENERAL NOTES	APPROVED BY	DATE	DWG. NO.	PART NAME	REV. NO.
4	ADDED A3811, PART 09214 CHANGED	03/25/10	ALL ANGLES @ 90° UNLESS NOTED OTHERWISE		07/17/10	09200A	PRECISION FROG GRINDER	4
3	09216 WAS 09227	07/26/10	3 PLACE DECIMAL ± .010					
2	OMITTED A5590, CHANGED (4) A2192 TO A2162	05/19/10	2 PLACE DECIMAL ± .020					
1	PLACED DRAWING ON BORDER	06/15/09	ANGLES ARE ± 0.5°					

Some elements in this drawing may not be accurately represented because the SolidWorks Document Manager is not installed on your system. (PRECISION FROG GRINDER)

Matweld, Inc

PH: (270) 444-0063 FAX: (270) 444-3180
 WEBSITE: www.matweld.com
 THE INFORMATION CONTAINED IN THIS DRAWING IS THE SOLE PROPERTY OF MATWELD, INC. ANY REPRODUCTION IN PART OR AS A WHOLE WITHOUT THE WRITTEN PERMISSION OF OF MATWELD, INC. IS PROHIBITED.

MATERIAL	DRAWN	DATE
ASSEMBLY	GLP	05/26/09



09231 4" STONE GUARD IS STORED HERE WHEN NOT IN USE

THIS SHEET SHOWS GRINDER BODY SHEET 2 OF 2

ISSUE NO.	REVISIONS	DATE	GENERAL NOTES	APPROVED BY	DATE	DWG. NO.	REV. NO.
4	ADDED A3811, PART 09214 CHANGE	07/26/10	3 PLACE DECIMAL ± .010		07/11	09200A	4
3	PART WAS 09227	07/26/10	2 PLACE DECIMAL ± .020				
2	OMITTED A5590, CHANGED (4) A2191 TO A2162	05/19/10	ANGLES ARE ± 0.5°				
1	PLACED DRAWING ON BORDER	06/15/09					

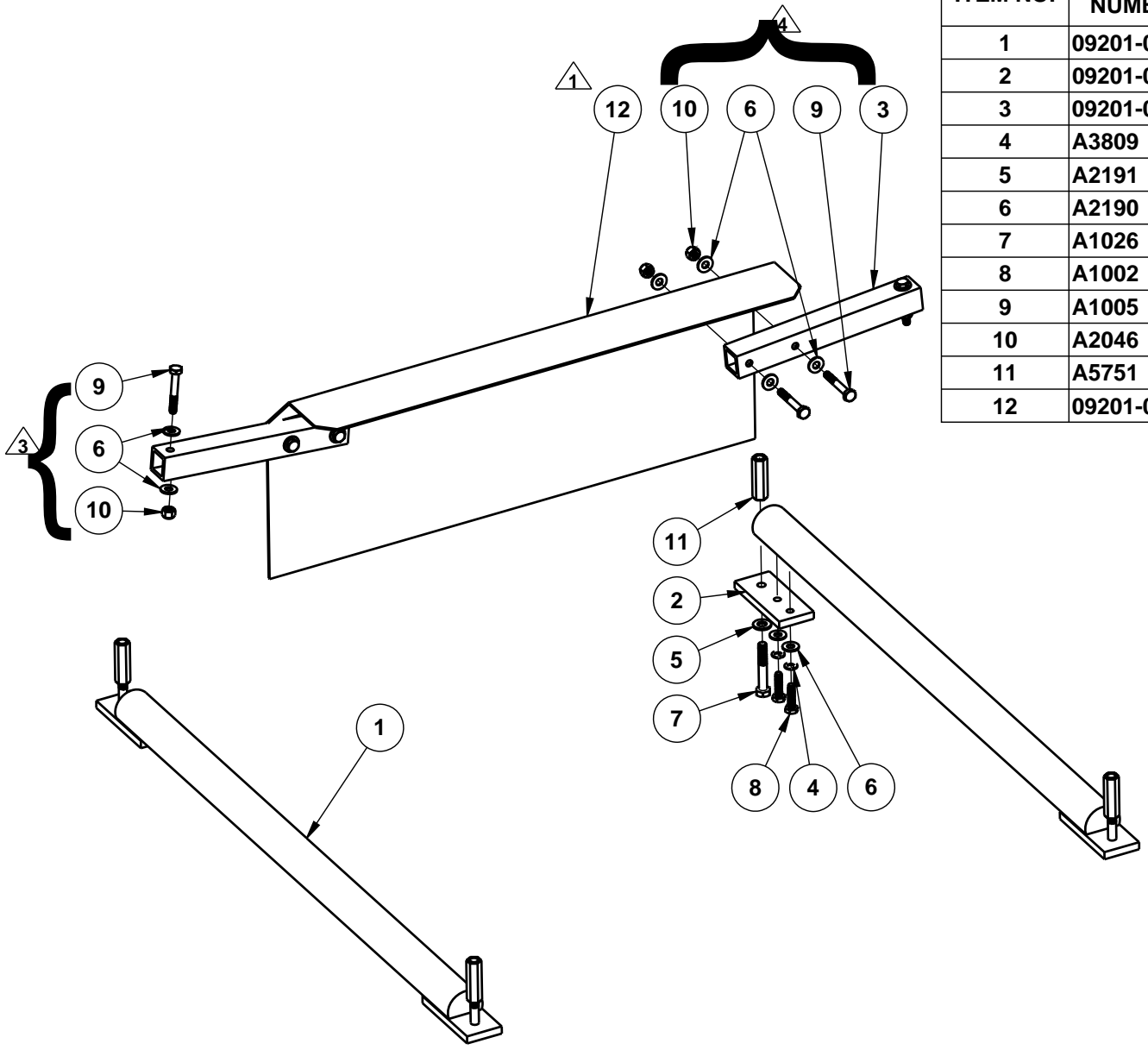
Some elements in this drawing may not be accurately represented because the SolidWorks Document Manager is not installed on your system. (PRECISION FROG GRINDER)

Matweld, Inc
 PH: (770) 424-0033 FAX: (770) 413-1180
 WEBSITE: www.matweld.com
 Email: sales@matweld.com

THE INFORMATION CONTAINED IN THIS DRAWING IS THE SOLE PROPERTY OF MATWELD, INC. ANY REPRODUCTION IN PART OR AS A WHOLE WITHOUT THE WRITTEN PERMISSION OF OF MATWELD, INC. IS PROHIBITED.

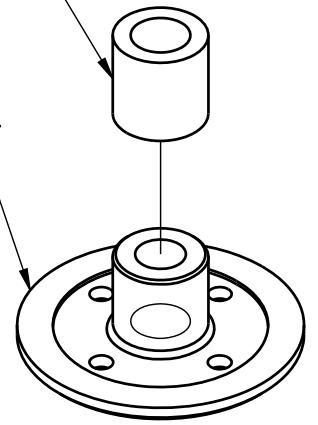
PART NAME		DRAWN	DATE
PRECISION FROG GRINDER		GLP	05/26/09
MATERIAL		REV. NO.	
ASSEMBLY		4	

ITEM NO.	PART NUMBER	DESCRIPTION	exploded/QTY.
1	09201-05A	BASE FRAME CROSS RAIL	2
2	09201-06A	CROSS RAIL SUPPORT PLATE	4
3	09201-07A	SPARK GUARD MOUNT BRACKET	2
4	A3809	1/4 LOCK WASHER	8
5	A2191	5/16 SAE FLAT WASHER	4
6	A2190	SAE 1/4 FLAT WASHER	20
7	A1026	5/16-18 x 2 HEX HEAD BOLT	4
8	A1002	1/4-20 x 1 HEX HEAD BOLT	8
9	A1005	1/4-20 x 1 3/4 HEX HEAD BOLT	6
10	A2046	1/4-20 NYLOCK NUT	6
11	A5751	5/16-18 COUPLING NUT	4
12	09201-08A	SPARK GUARD SHIELD	1



PART 09228A-05 USED AS SPACER FOR 2" STONE [△]2

PART 047009 USED TO SECURE 2" STONE ON SPINDLE [△]2



ISSUE NO.	REVISIONS		DATE	GENERAL NOTES	APPROVED BY		DATE	DWG. NO.	REV. NO.	
	REVISION				ENG.	GLP				
4	REVERSE DIRECTION OF BOLTS		02/08/10	DEBURR AND BREAK ALL SHARP EDGES CHAMFER ALL HOLES ALL ANGLES @ 90° UNLESS NOTED OTHERWISE TOLERANCES UNLESS OTHERWISE SPECIFIED 3 PLACE DECIMAL ± .010 2 PLACE DECIMAL ± .020 ANGLES ARE ± 0.5°			02/08/10	Matweld, Inc. PH: (270) 444-0085 FAX: (270) 443-6180 WEBSITE: www.matweld.com EMAIL: customerservice@matweld.com THE INFORMATION CONTAINED IN THIS DRAWING IS THE SOLE PROPERTY OF MATWELD, INC. ANY REPRODUCTION IN PART OR AS A WHOLE WITHOUT THE WRITTEN PERMISSION OF OF MATWELD, INC. IS PROHIBITED.	09295 [△] 2 2 FT. RAIL KIT	4
3	ADDED BOLTS TO END OF SPARK GUARDS		01/29/10							
2	PART # WAS 09285, ADDED 2 PARTS		03/04/09							
1	PART WAS 00116-01		02/25/09							
								MATERIAL	DRAWN	DATE
								ASSEMBLY	GLP	04/21/08