

01100RM LIGHT WEIGHT TWO-STAGE SPIKE PULLER

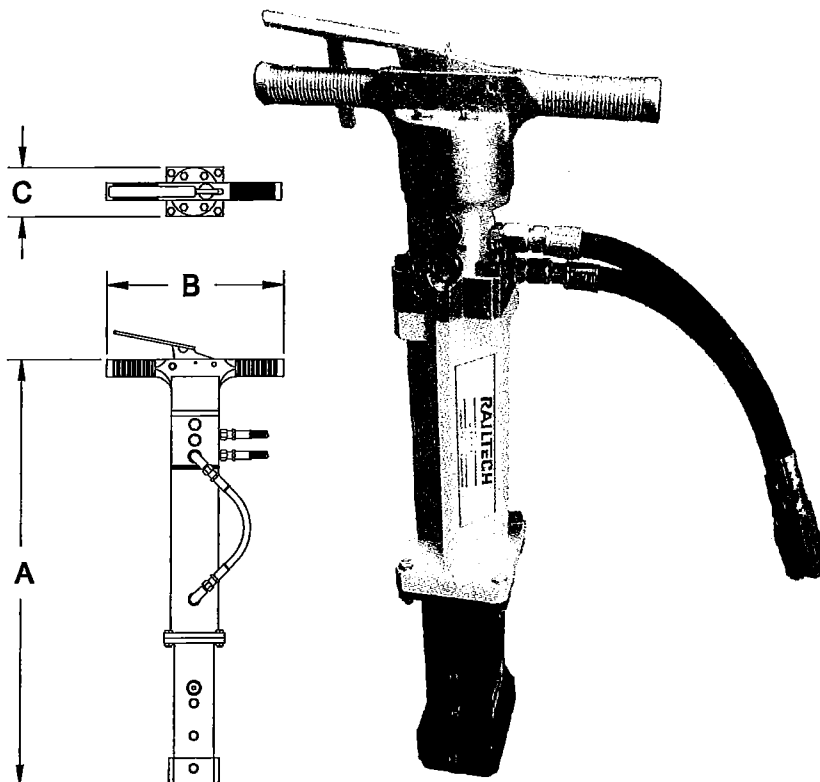
The Railtech Matweld Light Weight Spike Puller is twenty five percent (25%) lighter than our standard version. Weighing only 39 pounds, it generates the same pulling force of 13,000 pounds in a lighter design.

A safe, internal two-speed design ensures operators grasp the spike with a slower speed, avoiding a jerking motion- common with most spike pullers. The safety trigger provides a positive lock that prevents accidental activation of the tool. Its efficient design enables the operator to grab the spike from either side of the rail without repositioning, yet allowing the operator to pull and automatically drop the spike at the top of the stroke in one motion. All moving parts are fully enclosed for safety and the jaws can be changed without special tools within minutes at the work site.

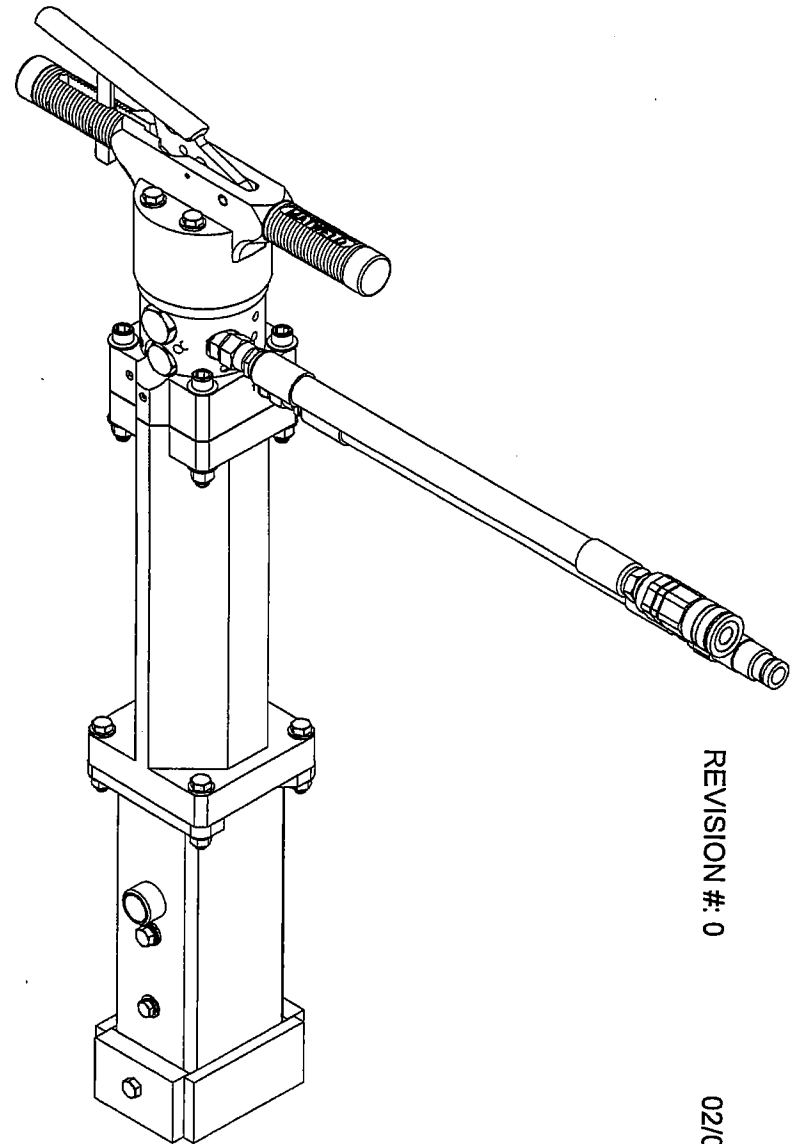
ACCESSORIES:

01145 - Hair pin puller kit

ALL SPIKE PULLERS ARE TWO-STAGE UNLESS SPECIFIED TO BE SINGLE-STAGE BY CUSTOMER.



<p>FLOW 5 GPM (19 LPM) OR 10 GPM (38 LPM)</p>
<p>PRESSURE 2000 PSI (140 bar)</p>
<p>DIMENSIONS A - 30" (76.2cm) B - 13" (33cm) C - 4" (10.1cm)</p>
<p>WEIGHT 39 lbs (17.7 kg)</p>



REVISION #: 0

02/05/15

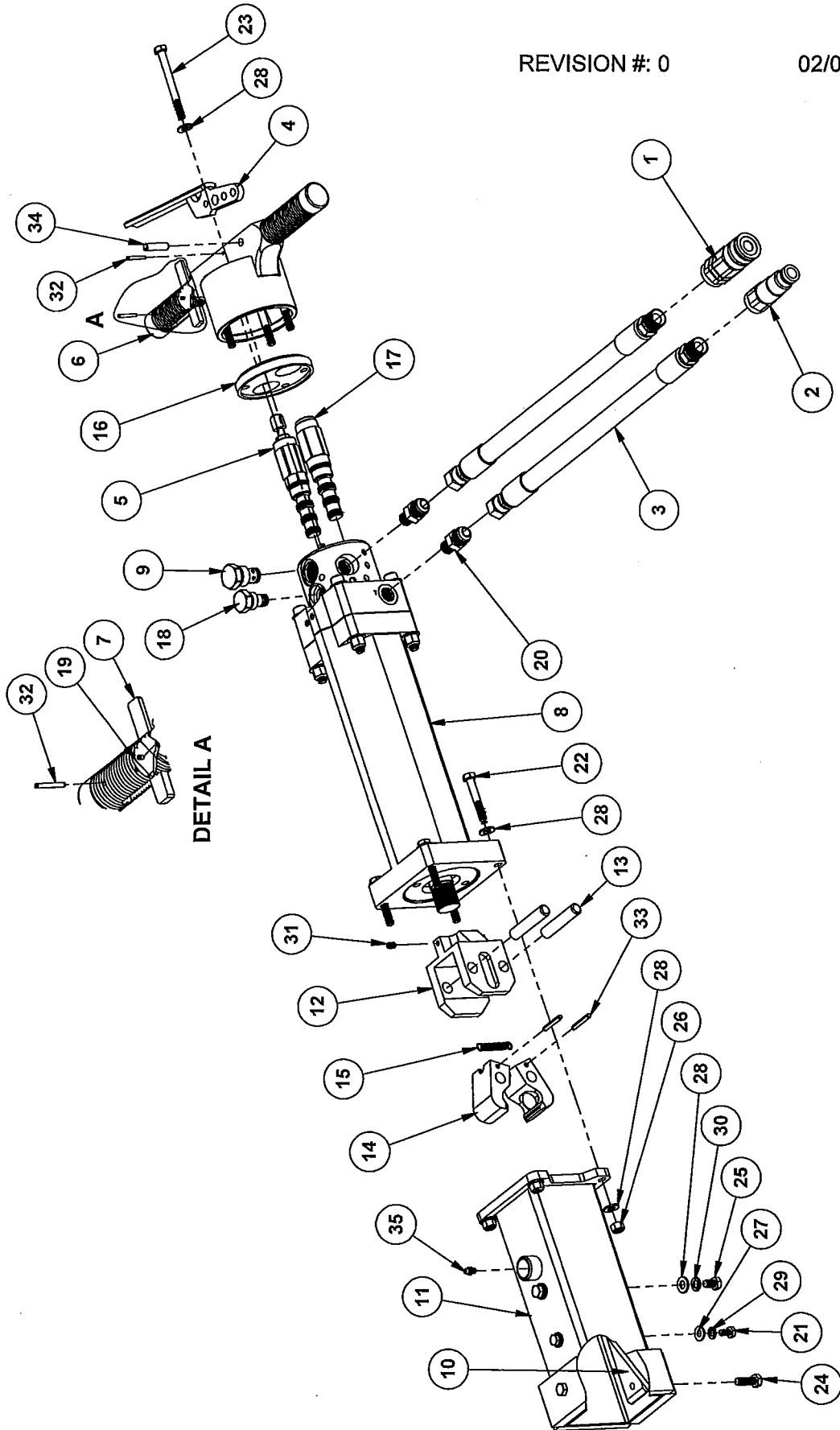
ITEM NO.	PART NUMBER	DESCRIPTION	QTY.
1	00145	QUICK DISCONNECT COUPLER	1
2	00146	QUICK DISCONNECT NIPPLE	1
3	00816	PIG TAIL ASSEMBLY	2
4	01101	FABRICATED TRIGGER HANDLE	1
5	01102	TRIGGER VALVE	1
6	01103AS	SPIKE PULLER SAFETY HANDLE	1
7	01104	SAFETY LEVER	1
8	01105RM	LIGHT WEIGHT CYLINDER	1
9	01106	CHECK VALVE	1
* 10	01108-02	TUBE RAMP	2
* 11	01108-TUBE	SPIKE PULLER TUBE	1
12	01109	JAW BRACKET	1
13	01110	DIA. 1/2 X 2 1/2 DOWEL PIN	2
14	01111	SPIKE PULLER JAW	2
15	01113	SPRING	1
16	01160	HANDLE SPACER	1
17	01161	SEQUENCE VALVE	1
18	01162	FLOW CONTROL VALVE	1
19	046594	LOCK SPRING	1
20	6400-08-06	-08 JIC x -06 O-RING NIPPLE	2
* 21	A0995	1/4-28 x 1/2 HEX HEAD BOLT	2
22	A1026	5/16-18 X 2 HEX HEAD BOLT	4
23	A1031	5/16-18 x 3 1/4 HEX HEAD BOLT	4
* 24	A1033	5/16-24 x 1 HEX HEAD BOLT	2
* 25	A1035	5/16-24 x 1/2 HEX HEAD BOLT	2
26	A2048	5/16-18 NYLOCK NUT	4
* 27	A2190	1/4 SAE FLAT WASHER	2
* 28	A2191	5/16 SAE FLAT WASHER	14
* 29	A3809	1/4 LOCK WASHER	2
* 30	A3810	5/16 LOCK WASHER	2
31	A5607	1/4-20 x 3/8 DOG POINT SET SCREW	1
32	A6062	DIA. 1/8 x 1 SPRING PIN	3
33	A6080	3/16 x 1 1/4 SPRING PIN	2
34	A6108	DIA. 5/16 x 1 1/4 SPRING PIN	1
* 35	GF-101	1/4-28 GREASE FITTING	2

* SOLD IN 01108A TUBE ASSEMBLY

Railtech Matweld reserves the right to change parts, features, or specifications without notice.
 Phone: 419-591-3770 Fax: 419-599-3630 www.matweld.com

REVISION #: 0

02/05/15



Railtech Matweld reserves the right to change parts, features, or specifications without notice.
Phone: 419-591-3770 Fax: 419-599-3630 www.matweld.com