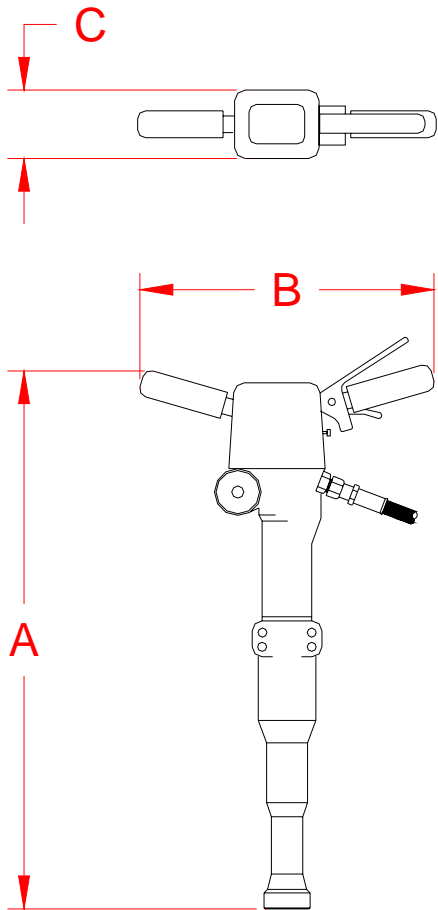


**08300
 SPIKE DRIVER**



The Matweld Spike Driver is equipped with torsion dampened handles which reduce the vibration level to a minimum. An excellent heavy duty tool designed to drive spikes and hairpins into the toughest ties in seconds.



FLOW	PRESSURE	DIMENSIONS	WEIGHT
5 gpm (19 lpm)	2000 psi (140 bar)	A - 33" (838mm) B - 18" (457mm) C - 6" (152mm)	65 lbs (30 kg)

MATWELD, INC.

PHONE:(270) 444-0085

FAX:(270) 443-6180

Matweld reserves the right to change parts, features, or specifications without notice.

GENERAL SAFETY PRECAUTIONS:

TOOL OPERATORS AND MAINTENANCE PERSONNEL MUST ALWAYS COMPLY WITH THE SAFETY PRECAUTIONS GIVEN IN THIS MANUAL, AND WITH ALL STICKERS AND TAGS ATTACHED TO THE TOOL AND HOSE. ALL SAFETY PRECAUTIONS ARE GIVEN FOR YOUR SAFETY. READ TO UNDERSTAND AND FOLLOW ALL SAFETY, MAINTENANCE AND OPERATION INSTRUCTIONS BEFORE YOU USE OR MAINTAIN THE TOOL. REVIEW THE MANUAL DAILY BEFORE USING THE TOOL. IN ADDITION, FOLLOW ALL SAFETY GUIDELINES GIVEN YOU BY YOUR SUPERVISOR. DO NOT USE THE TOOL IF YOU HAVE ANY QUESTIONS ABOUT THE OPERATION, SAFETY OR MAINTENANCE OF THIS TOOL. FAILURE TO FOLLOW THESE INSTRUCTIONS CAN RESULT IN PERSONAL INJURY OR EQUIPMENT DAMAGE.

MATWELD HAS NO CONTROL OVER TOOL USE OR OPERATION ONCE IT LEAVES THE MATWELD PLANT. MATWELD HAS NO CONTROL OVER OPERATOR OR MAINTAINER SELECTION. THE CUSTOMER MUST ASSUME RESPONSIBILITY FOR THE TOOL'S SUITABILITY FOR A PARTICULAR FUNCTION, FOR ANYONE USING THE TOOL OR MAINTAINING THE TOOL REGARDING THEIR FITNESS TO USE THE TOOL OR REPAIR THE TOOL, UNDERSTANDING OF THE OPERATION AND SAFETY AND MAINTENANCE MANUAL, INTELLIGENCE TO USE GOOD JUDGMENT NECESSARY TO WORK SAFELY AND EFFICIENTLY WITHOUT ENDANGERING THEMSELVES OR BYSTANDERS IN THE WORK AREA.

- DO NOT OPERATE THE TOOL UNTIL YOU HAVE BEEN THOROUGHLY AND PROPERLY TRAINED OR UNDER THE SUPERVISION OF AN INSTRUCTOR.
- CHECK POWER SOURCE DAILY TO DETERMINE IF CORRECT FLOW AND PRESSURE ARE AVAILABLE. NEVER EXCEED FLOWS OR PRESSURES FOR THE TOOL BEING USED. PERSONAL INJURY OR DAMAGE TO THE TOOL CAN RESULT.
- OPERATORS MUST CLEAR THE WORK AREA OF NONESSENTIAL PERSONNEL. FLYING DEBRIS CAN CAUSE SERIOUS INJURY.
- THE OPERATOR MUST BE FAMILIAR WITH ALL PROHIBITED WORK AREAS SUCH AS UNSAFE GRADES, POOR FOOTING AREAS AND OVERHEAD HAZARDS.
- MAINTAIN BALANCE AND PROPER FOOTING AT ALL TIMES. NEVER OVERREACH TO THE EXTENT THAT A BROKEN PART OR SUDDEN MOVEMENT OF THE TOOL CAN CAUSE YOU TO LOSE YOUR BALANCE AND FALL, OR CAUSE INJURY TO YOUR SELF OR SOMEONE ELSE.

- WHEN WORKING NEAR ELECTRICAL CONDUCTORS, ALWAYS ASSUME THAT THE CONDUCTORS ARE ENERGIZED AND THAT HOSES AND CLOTHING CAN CONDUCT HARMFUL ELECTRICITY. USE HOSES LABELED AND CERTIFIED AS NON-CONDUCTIVE.
- DO NOT OPERATE THE TOOL AT EXCESSIVE FLUID TEMPERATURES. OPERATOR DISCOMFORT AND POTENTIAL BURNS CAN RESULT AT HIGH OIL TEMPERATURES.
- NEVER WEAR LOOSE CLOTHING THAT CAN GET ENTANGLED IN THE WORKING PARTS OF THE TOOLS OR BE CARELESS WITH HANDS, FEET OR OTHER BODY PARTS AROUND THE WORKING PARTS OF THE TOOLS. HYDRAULIC TOOLS EXERT HIGH TORQUE AND FORCE AND CAN CAUSE SERIOUS INJURY OR DEATH IF IMPROPERLY USED.
- TO AVOID PERSONAL INJURY OR EQUIPMENT DAMAGE, ALL TOOL REPAIR, MAINTENANCE OR SERVICE MUST ONLY BE PERFORMED BY AUTHORIZED AND PROPERLY TRAINED PERSONNEL.
- ALWAYS WEAR SAFETY EQUIPMENT SUCH AS OIL INJECTION RESISTANT WORK GLOVES, SAFETY GLASSES, SAFETY BOOTS, EAR PROTECTION AND OTHER SAFETY APPAREL DICTATED BY YOUR SUPERVISOR APPLICABLE FOR THE JOB YOU ARE DOING AND THE TOOL YOU ARE USING.
- DO NOT CLEAN, INSPECT, OR REPAIR THE TOOL WHILE CONNECTED TO THE POWER SOURCE. ACCIDENTAL ENGAGEMENT OF THE TOOL CAN CAUSE SERIOUS PERSONAL INJURY.
- OIL INJECTION HAZARD EXISTS WITH THIS TOOL. OIL INJECTION IS A CONDITION WHERE HYDRAULIC OIL IS INJECTED UNDER THE SKIN FROM PRESSURE IN THE LINE. ALWAYS WEAR GLOVES AND REPAIR ANY LEAKS IMMEDIATELY. NEVER CARRY A TOOL BY THE HOSES.
- DO NOT USE DAMAGED EQUIPMENT. IMMEDIATELY REPLACE ANY DAMAGED HOSES, FITTINGS, OR OTHER COMPONENTS SHOWING WIRE BRAID, NICKS, CUTS, DAMAGE OR ABRASIONS. FAILURE TO DO SO MAY RESULT IN EQUIPMENT DAMAGE AND / OR PERSONAL INJURY OR DEATH.
- CLEAN UP ANY OIL OR FLUID SPILLS IMMEDIATELY.
- * ONLY USE THE SPIKE DRIVER IN ACCORDANCE WITH THE LOCAL WORKING REGULATIONS ON ALLOWED WORKING TIME. TIME BASED ON SPIKE DRIVER VIBRATION LEVEL. WORKING WITH THE SPIKE DRIVER LONGER THAN PRESCRIBED MAY DAMAGE THE OPERATOR.
- * ALL MATWELD SPIKE DRIVERS ARE SUPPLIED WITH SAFETY TRIGGERS.
(THE SAFETY TRIGGER MAY NOT BE DISMANTLED.)
- * THE SPIKE DRIVER MAY NOT BE OPERATED IF THE OIL TEMPERATURE IS ABOVE 183° F (70° C). OPERATION AT HIGHER TEMPERATURES MAY RESULT IN THE SPIKE DRIVER GETTING WARMER THAN NORMAL AND THE OPERATOR RISKS GETTING BURNED ON IT.
- * ALWAYS MAKE SURE THAT THE LABELS AND WARNING SIGNS ARE LEGIBLE.
- * ALWAYS USE HOSES, COUPLINGS, AND SPARES AS SUCH RECOMMENDED BY MATWELD, INC.

MATWELD, INC.

PHONE:(270) 444-0085

FAX:(270) 443-6180

Matweld reserves the right to change parts, features, or specifications without notice.

08300 SPIKE DRIVER

SAFETY PRECAUTIONS:

1. **ALWAYS** WEAR PROTECTIVE EQUIPMENT SUCH AS GLOVES, SAFETY GLASSES, EAR PROTECTION AND SAFETY SHOES.
2. DO NOT WEAR CLOTHING WHICH MAY BECOME ENTANGLED IN THE TOOL.
3. **ALWAYS** KEEP WORK AREA FREE OF TOOLS OR ANY OTHER OBJECTS WHICH MAY IMPAIR SOUND FOOTING.
4. CAUTION OIL INJECTION HAZARD EXISTS WITH THIS TOOL. OIL INJECTION IS A CONDITION WHERE THE HYDRAULIC OIL IS FORCED UNDER THE SKIN THROUGH PRESSURE IN THE LINE. ALWAYS WEAR GLOVES AND REPAIR LEAKS IMMEDIATELY.
5. **DO NOT** CARRY THE TOOL BY THE PIGTAIL HOSES.
6. **NEVER** ALLOW ANYONE OTHER THAN A PROPERLY TRAINED SERVICE REPRESENTATIVE TO SERVICE ACCUMULATOR. THE ACCUMULATOR IS UNDER HIGH PRESSURE, IMPROPER DISASSEMBLY CAN CAUSE SERIOUS INJURY OR DEATH. DO NOT USE THE TOOL OR HOOK TO A POWER SOURCE IF IT APPEARS THAT THE ACCUMULATOR HAS BEEN TAMPERED WITH. IMMEDIATELY RETURN THE TOOL TO MATWELD FOR INSPECTION AND SERVICE.
7. **ALWAYS** KEEP A FIRM GRASP ON THE DRIVER, WITH BOTH HANDS, AT ALL TIMES.
8. **DO NOT** LEAN ON THE TOOL WHILE IN OPERATION. THE FAILURE OF THE BIT OR ANY OTHER PART COULD CAUSE YOU TO LOOSE YOUR BALANCE AND CAUSE SERIOUS INJURY.
9. **AVOID** FREE BLOWS (THE PISTON DOES NOT HIT THE TOOL), AS THIS WILL LEAD TO UNNECESSARY HEATING OF THE OIL AND IN THE LONG RUN DAMAGE BOTH SEALS AND THE TOOL.
10. TO MINIMIZE THE POSSIBILITY OF ANVIL BREAKAGE, REPLACE ANVIL ANNUALLY AND INSPECT CASTING FOR CRACKS OR DAMAGE.
11. DO NOT "DRY FIRE" THE TOOL. ALWAYS SET THE SPIKE DRIVER ON THE SPIKE BEFORE PULLING THE TRIGGER.

08300 SPIKE DRIVER

FLOW: 10 GPM (38 LPM)
PRESSURE: 2000 PSI (140 BAR)
BACKPRESSURE: 150 PSI (10 BAR) MAXIMUM
WEIGHT: 65 LBS.

OPERATION:

1. WITH THE POWER SOURCE IN THE "OFF" POSITION, CONNECT THE HOSES. DO NOT DRAG THE SERVICE HOSE BY PULLING WITH THE TOOL. LOOP THE SERVICE HOSE IN THE WORK AREA IN SUCH A WAY TO RELIEVE STRESS ON THE HOSE AND QUICK DISCONNECT FITTINGS WHILE WORKING. BE AWARE OF HOSE LOCATION AT ALL TIMES.
2. CONNECT THE TOOL TO THE POWER SOURCE.
3. TURN THE POWER SOURCE "ON" TO SUPPLY 10 GPM TO TOOL.
4. MAKE SURE SPIKES THAT ARE TO BE DRIVEN ARE SECURELY SET.
5. WITH THE TOOL PLACED ON TOP OF A SPIKE AND POSITIONED READY FOR WORK, RELEASE THE SAFETY TRIGGER AND PRESS THE TRIGGER LEVER DOWN TOWARDS HANDLE.
6. KEEP A STEADY PRESSURE ON SPIKE UNTIL PROPERLY SEATED.
7. RELEASE THE TRIGGER WHEN THE TOOL IS BEING REPOSITIONED TO ANOTHER WORK AREA. THE SAFETY TRIGGER AUTOMATICALLY RE-LOCKS THE TRIGGER LEVER.
8. TURN THE POWER SOURCE "**OFF**" BEFORE DISCONNECTING TOOL.

08300 SPIKE DRIVER

MAINTENANCE:

1. CHECK TOOL **DAILY** FOR PROPER OPERATION, LEAKS, OR DAMAGE.
2. INSPECT HOSES **DAILY**. REPLACE CUT, BURNED, OR OTHERWISE DAMAGED HOSES.
3. KEEP QUICK DISCONNECT COUPLERS **CLEAN AND LUBRICATED**.
4. USE HYDRAULIC FLUIDS THAT COMPLY WITH HTMA SPECIFICATION 5.7, THE HYDRAULIC FLUID SHOULD HAVE A VISCOSITY BETWEEN 100 AND 400 SSU (20-82 CENTISTOKES) AT THE MAXIMUM AND MINIMUM EXPECTED OPERATING TEMPERATURES. PETROLEUM BASED HYDRAULIC FLUIDS WITH ANTI-WEAR PROPERTIES AND A VISCOSITY INDEX OF OVER 140 WORK FOR A WIDE RANGE OF OPERATING CONDITIONS.

THE FOLLOWING OILS MEET HTMA SPECIFICATION 5.7:

AMOCO RYKON MV	CITGO A/W ALL TEMP
SUNVIS 706	MOBIL D.T.E. 13
CHEVRON EP-MV	TEXACO "RANDO" HDAZ

OTHER FLUIDS THAT MEET OR EXCEED THIS SPECIFICATION CAN BE USED.

*SEE **COLD WEATHER OPERATION** HYDRAULIC OIL NOTE.

5. HAVE TOOL INSPECTED, AT LEAST ANNUALLY, BY MATWELD OR A MATWELD QUALIFIED SERVICE REPRESENTATIVE TO DETERMINE IF TOOL IS IN NEED OF SAFETY CHANGES OR WORN PART REPLACEMENT.
6. CONTACT MATWELD ON A PERIODIC BASIS, AT LEAST ANNUALLY, FOR SERVICE BULLETINS, SAFETY NOTICES, OR OTHER IMPORTANT INFORMATION PERTAINING TO THIS TOOL.
7. INSPECT ANVIL EVERY SIX MONTHS FOR WEAR, CRACKS, OR MUSHROOM CONDITION.

SERVICE NOTE: IF ANVIL BREAKS IN SERVICE, CONTINUED USE OF TOOL WILL BREAK NOSE CASTING.

8. QUALIFY PROPER POWER UNIT SETTINGS BY MEANS OF TEST EQUIPMENT, MATWELD FLOW AND PRESSURE TEST GAUGE- MODEL #03600.

MAKE SURE THAT:

- THE OIL SUPPLY IS NOT TOO HIGH
- THE WORKING PRESSURE IS NOT TOO HIGH
- THE RETURN PRESSURE IS NOT TOO HIGH
- THE PRESSURE RELIEF VALVE IS NOT SET HIGHER THAN 2150 PSI (150 BAR)
- THE INTERNAL DIAMETER OF THE HOSES ARE SUFFICIENT (MIN 1/2")

COLD WEATHER OPERATION

HYDRAULIC SYSTEM PERFORMANCE IS AFFECTED WHEN THE TEMPERATURE DROPS BELOW 50 F. THEREFORE MEASURE SHOULD BE TAKEN TO PRE-WARM TOOLS AND FLUIDS BEFORE OPERATING.

MATWELD, INC.

PHONE:(270) 444-0085

FAX:(270) 443-6180

Matweld reserves the right to change parts, features, or specifications without notice.

08300 SPIKE DRIVER

TROUBLESHOOTING GUIDE:

Problem	Cause	Solution
Spike Driver does not start, there is no pressure in P-hose	Trigger mechanism does not actuate trigger piston correctly	Dismount top cover, and check and adjust as required
Spike Driver does not start, there is pressure in P-hose	Striking piston is stuck in cylinder	Check for broken roll pins and replace as needed.
		Seizing between cylinder and striking piston. Polish or replace components.
	Defective Q.D. coupling	Check Q.D. coupling
	Oil supply is made to T-connection	Switch pump and tank line
Spike Driver works irregularly	Impurities in hydraulic oil	Refer to owners manual for power source
	Oil level in power source too low	Add hydraulic oil
	Anvil is broken	Replace anvil and check lower tube for damage.
Bad performance	Internal leak	Dismount valve housing and replace O-rings
	Oil flow from the power source is not correct for the spike driver	Check oil flow
	Accumulator pressure too low	Charge with nitrogen to 50 bar (725 psi).
	Defective diaphragm	Replace diaphragm
	Defective Q.D. couplings	Check Q.D. couplings
	Return pressure too high	Check power source/hoses Back pressure exceeds 250 psi. Optimum back pressure should be 150 psi or less.
	Hose diameter too small	Check hoses

08300 SPIKE DRIVER

OIL SUPPLY AND PRESSURE:

YOUR NEW MATWELD BREAKER IS DESIGNED FOR CERTAIN OIL SUPPLY, WORKING PRESSURE AND MAXIMUM PRESSURE. A TOO HIGH OIL SUPPLY AND/OR A TOO HIGH PRESSURE RESULTS IN OVERLOAD OF THE BREAKER, MEANING THAT THE LIFETIME OF YOUR NEW MATWELD BREAKER WILL NOT BE AS EXPECTED, AND THAT YOUR SERVICE AND REPAIR COST WILL BE TOO HIGH.

IT IS IMPORTANT TO CHECK THAT THE BREAKER IS NOT SUPPLIED WITH AN OIL FLOW BEYOND ITS DESIGN CAPACITY, THAT THE WORKING PRESSURE IS CORRECT AND THAT THE MAXIMUM ALLOWED PRESSURE IS NOT EXCEEDED.

VIBRATION LEVEL:

THERE ARE MANY EXAMINATIONS ABOUT THE RISK OF CONTRACTING THE SO-CALLED "WHITE FINGERS" DISEASE AS A CONSEQUENCE OF THE USE OF TOOLS WITH HIGH VIBRATION LEVEL. HAND-HELD ELECTRIC, PNEUMATIC AND HYDRAULIC BREAKERS BELONG TO THIS CATEGORY.

TO REDUCE THE RISK OF INJURY, A NUMBER OF GUIDELINES FOR MAXIMUM DAILY USE HAVE BEEN LAID DOWN. THE RISK IS MINIMIZED IF YOU KEEP THE TIMES OF MAXIMUM DAILY USE.

IT IS THEREFORE IMPORTANT TO MANUFACTURERS OF HAND HELD BREAKERS THAT THEY OFFER BREAKERS WITH A LOW VIBRATION LEVEL.

AT MATWELD, WE ATTACH GREAT IMPORTANCE TO THE PROTECTION OF OUR CUSTOMERS IN THE FORM OF A VERY LOW VIBRATION LEVEL.

THEREFORE, YOUR NEW MATWELD BREAKER IS EQUIPPED WITH A HANDLE DESIGNED FOR THE LOWEST POSSIBLE VIBRATION LEVEL, EVEN THOUGH THE BREAKER HAS HIGH PERFORMANCE. ON ALL MATWELD BREAKERS WE MOUNT OUR BEST VIBRATION-DAMPED HANDLE AS STANDARD TO PROTECT YOU AS USER.

IF YOU WISH TO OBTAIN FURTHER INFORMATION ABOUT THE GUIDELINES FOR MAXIMUM DAILY USE, PLEASE CONTACT US.

<u>BLOW FREQUENCY:</u> <i>1560 1/MIN.</i>	<u>VIBRATION LEVEL:</u> <i>133.6 dB (4.8M/S²)</i>	<u>SOUND PRESSURE</u>
<u>BLOW ENERGY:</u> <i>60 JOULE</i>		<u>LEVEL (Lpa) LM:</u> <i>94dB</i>
		<u>SOUND POWER LEVEL</u>
		<u>(LWA):</u> <i>105 dB</i>

REVIEW OF HYDRAULIC PRINCIPLES

A. TOOL CIRCUIT

1. HYDRAULIC FORMULAS:

$$\text{GPM} = \frac{\text{CID} \times \text{RPM}}{231} \qquad \text{HP} = \frac{\text{GPM} \times \text{PSI}}{1714 (.85)}$$

Example: HP required to deliver 10 GPM at 1500 PSI.

$$\frac{10 \text{ GPM} \times 1500 \text{ PSI}}{1456.9} = \frac{15000}{1456.9} = 10.3 \text{ HP}$$

(subtract back pressure for tool HP)

Estimated HP delivered by pump or used by tool.

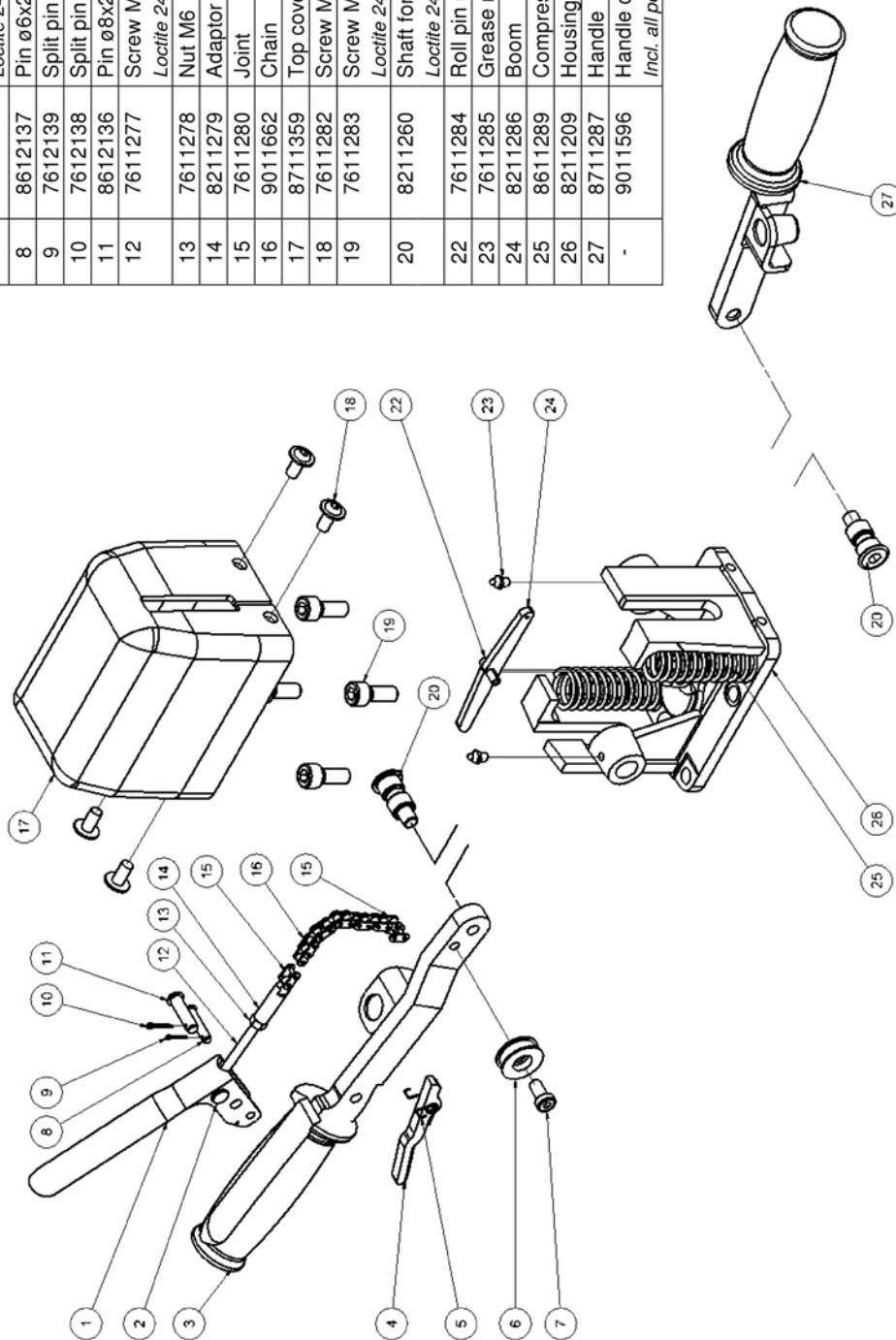
GPM	PSI	500	1,000	1,500	2,000	2,500	3,000
3		1.03	2.06	3.09	4.12	5.15	6.18
5		1.72	3.43	5.15	6.86	8.58	10.30
10		3.43	6.86	10.3	13.70	17.20	20.60
15		5.15	10.30	15.40	20.60	25.70	30.90

2. BACK PRESSURE

BACK PRESSURE MEASURED AT THE TOOL RETURN PORT MUST NOT EXCEED THE MANUFACTURERS BACK PRESSURE RATING. MOST MANUFACTURERS LIST THE MAXIMUM BACK PRESSURE FOR THEIR HYDRAULIC TOOLS AT 250 PSI. BACK PRESSURE MEASURED ON THE RETURN SIDE OF THE TOOL IS THE FORCE REQUIRED TO GET THE OIL BACK TO THE TANK. IN ALMOST ALL CASES THE LOWER THE BACK PRESSURE THE BETTER THE TOOL PERFORMANCE. FIRST, THE BACK PRESSURE IS SUBTRACTED FROM THE MAXIMUM TOOL PRESSURE TO ARRIVE AT A MAXIMUM TOOL OPERATING PRESSURE. FOR EXAMPLE, TOOLS WITH 2000 PSI OPERATING PRESSURE ARE INSTALLED ON A SYSTEM WITH 250 PSI BACK PRESSURE. THIS LEAVES 1750 PSI AS A MAXIMUM TOOL PRESSURE. IMAGINE A SYSTEM WITH 500 PSI BACK PRESSURE. 2000 MINUS 500 PSI BACK PRESSURE LEAVES ONLY 1500 PSI FOR THE TOOL. SECOND, TOOLS ARE DESIGNED FOR PRESSURE TO BUILD ON THE PRESSURE SIDE OF THE TOOL. IF TOO MUCH PRESSURE BUILDS ON THE RETURN SIDE, NOT ONLY IS PERFORMANCE EFFECTED, BUT SEALS MAY BLOW. THIS IS WHY IT IS VERY IMPORTANT TO DIRECT THE FLOW INTO THE TOOL CORRECTLY. REVERSING THE HOSES TO TEST MAY RESULT IN BLOWN SEALS, DAMAGE TO THE TOOL, AND PERSONAL INJURY.

08300 SPIKE DRIVER

Pos.	Part No.	Description	Pcs.
1	8211270	Trigger lever	1
2	8211271	Cross pin	1
3	8711275	Handle (trigger side)	1
4	8211273	Safety trigger	1
5	8611291	Spring	1
6	8211276	Chain spool	1
7	7611290	Screw M8x16 Loctite 243	1
8	8612137	Pin ø6x27	1
9	7612139	Split pin ø1.6x10	1
10	7612138	Split pin ø2.0x12	1
11	8612136	Pin ø8x27	1
12	7611277	Screw M6x80 Loctite 243	1
13	7611278	Nut M6	1
14	8211279	Adaptor	1
15	7611280	Joint	2
16	9011662	Chain	1
17	8711359	Top cover black w/o logo	1
18	7611282	Screw M8x16	4
19	7611283	Screw M10x25 Loctite 243 - 80 Nm	4
20	8211260	Shaft for handle Loctite 243 - 80 Nm	2
22	7611284	Roll pin 6x20	1
23	7611285	Grease nipple M6	2
24	8211286	Boom	1
25	8611289	Compression spring	2
26	8211209	Housing	1
27	8711287	Handle	1
-	9011596	Handle complete <i>Incl. all positions except 17, 18 and 19</i>	1



MATWELD, INC.

PHONE:(270) 444-0085

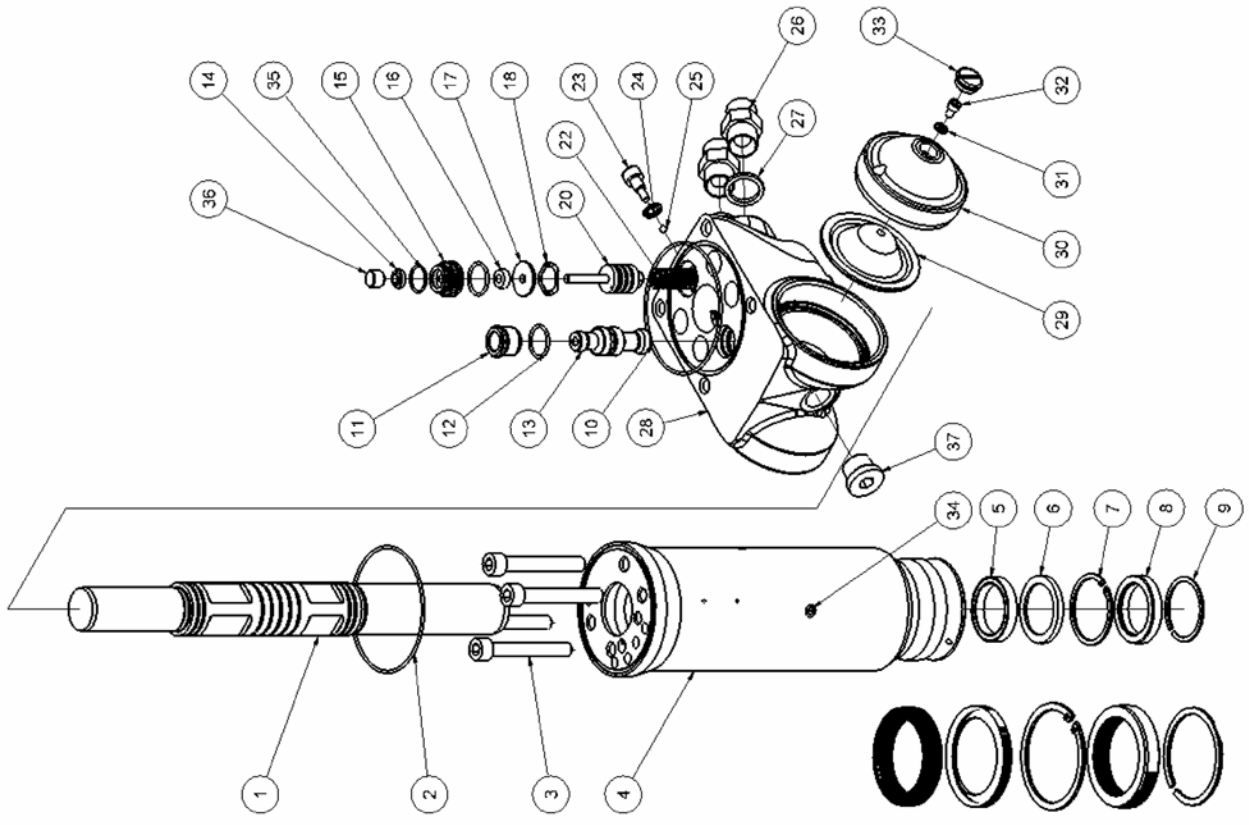
FAX:(270) 443-6180

Matweld reserves the right to change parts, features, or specifications without notice.

08300 SPIKE DRIVER

Pos.	Part No.	Description	Pcs.
1	8211755	Striking piston	1
		<i>Spray with Loctite 8191</i>	
* 2	7512001	O-ring 86x2	1
3	7611244	Screw M10x70	4
		<i>Tighten crosswise 20-40-80 Nm</i>	
4	9012070	Cylinder	1
* 5	7512005	Seal ø36/ø46x7.3	1
* 6	8212006	Supporting washer	1
* 7	7612007	Retaining ring	1
* 8	9012025	Rod wiper complete	1
* 9	7612009	Spring ring	1
* 10	7512002	O-ring 90x2	1
11	8211228	Sleeve	1
* 12	7511248	O-ring 20x2	2
13	8211772	Spool	1
* 14	7521013	Seal	1
15	8211226	Seal housing	1
* 16	7521014	Seal	1
17	8211251	Washer	1
18	7611252	Crinkled spring washer 23.8x17.3x0.3	1
20	9011750	Trigger piston complete	1
22	8611249	Compression spring 1.25x12.5x62.5	1
23	8611255	Screw M8 f/lock nut	1
* 24	7511254	Seal ring M8	1
25	7611253	Ball ø5 mm	1
26	7421343	Fitting 1/2"x3/4" JIC	2
* 27	7521072	Seal ring 1/2"	2
28	8211756	Valve housing	1
29	7711091	Diaphragm	2
30	8211216	Accumulator cover	2
* 31	7511268	Seal ring M5	2
32	8611269	Screw M5 f/accumulator	2
33	8211256	Plug	2
34	7621037	Pipe plug 1/8"	6
* 35	7511300	O-ring 17x1.5	1
36	8211227	Distance piece	1
37	7621075	Threaded plug 1/2" w/seal	1

* Items sold in 9012071 seal kit only



MATWELD, INC.

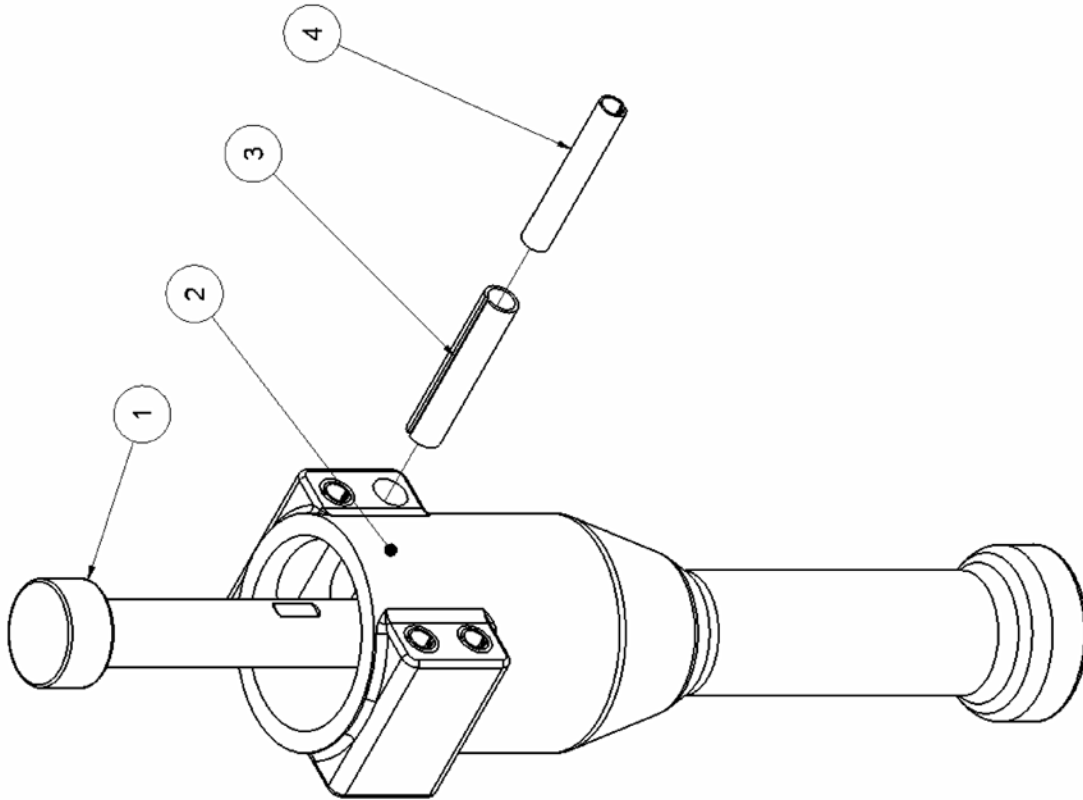
PHONE:(270) 444-0085

FAX:(270) 443-6180

Matweld reserves the right to change parts, features, or specifications without notice.

08300 SPIKE DRIVER

Pos.	Part No.	Description	Pcs.
1	8212000	Anvil	1
2	8211998	Nose part	1
3	7612003	Roll pin $\varnothing 14 \times 70$	4
4	7612069	Roll pin $\varnothing 11 \times 70$	4



MATWELD, INC.

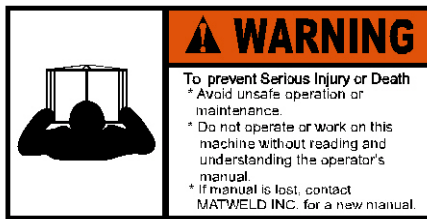
PHONE:(270) 444-0085

FAX:(270) 443-6180

Matweld reserves the right to change parts, features, or specifications without notice.

08300 SPIKE DRIVER

DECAL LEGEND:



LIMITED WARRANTY

MATWELD, INC., PADUCAH, KY., WARRANTS TO THE ORIGINAL PURCHASE OF THIS PRODUCT THAT THE PRODUCT WILL BE FREE FROM DEFECTS IN MATERIAL AND WORKMANSHIP FOR THE PERIOD OF ONE (1) YEAR AFTER THE DELIVERY OF SUCH PRODUCT TO THE CUSTOMER. OTHER EQUIPMENT AND PARTS USED, BUT NOT MANUFACTURED BY MATWELD INC. ARE COVERED DIRECTLY BY THE WARRANTY OF THE MANUFACTURER OF THOSE PRODUCTS. PROOF OF PURCHASE MUST BE DOCUMENTED INCLUDING REFERENCE TO A SERIAL NUMBER LOCATED ON EACH TOOL. THE PURCHASER'S ONLY REMEDIES UNDER THIS LIMITED WARRANTY SHALL BE LIMITED AT MATWELD'S SOLE OPTION TO THE FOLLOWING: REPAIR, REPLACEMENT OR REFUND OF THE PURCHASE PRICE OF THE DEFECTIVE PRODUCTS. EACH OF THESE REMEDIES REQUIRES TIMELY NOTIFICATION OF THE DEFECT IN THE PRODUCT AND SUBSTANTIATION THAT THE PRODUCT HAS BEEN PROPERLY STORED, MAINTAINED AND USED. MATWELD'S OBLIGATIONS HEREUNDER EXTEND ONLY TO THE PURCHASER OF THE PRODUCT AND NOT TO ANY THIRD PARTY.

AS A CONDITION PRECEDENT TO MATWELD'S OBLIGATION HEREUNDER, THE DEFECTIVE PRODUCT MUST NOT HAVE BEEN ALTERED OR MODIFIED WITHOUT THE EXPRESS WRITTEN APPROVAL OF MATWELD, INC. THE PRODUCT MUST NOT HAVE BEEN SUBJECTED TO DELIBERATE DAMAGE, SHIPPING DAMAGE, NEGLIGENCE, TAMPERING BY UNAUTHORIZED PERSONNEL OR DAMAGE BY IMPROPER USE, STORAGE OR MAINTENANCE. SERIAL NUMBERS MUST NOT HAVE BEEN ALTERED, DEFACTED OR REMOVED. SUCH ACTION VOIDS LIMITED WARRANTY.

EXCLUSIONS TO LIMITED WARRANTY

THIS LIMITED WARRANTY IS EXCLUSIVE AND IS IN LIEU OF ANY OTHER WARRANTY, WRITTEN OR ORAL, EXPRESSED OR IMPLIED, INCLUDING, WITHOUT LIMITATION, ANY IMPLIED WARRANTY OR MERCHANTABILITY OR FITNESS FOR A PARTICULAR PURPOSE.

LIMITED WARRANTY DOES NOT COVER NORMAL WEAR AND TEAR ITEMS SUCH AS FILTERS, HOSES, COUPLERS, BITS, SOCKETS, AUGERS, AND BATTERIES.

LIMITATION OF LIABILITY

EXCEPT AS PROVIDED ABOVE, MATWELD SHALL IN NO EVENT BE LIABLE OR RESPONSIBLE FOR ANY INJURY, LOSS OR DAMAGE, DIRECT, INCIDENTAL OR CONSEQUENTIAL, ARISING OUT OF THE USE OR MISUSE OR INABILITY TO USE THE PRODUCT, HOWEVER CAUSED AND ON ANY THEORY OF LIABILITY INCLUDING, WITHOUT LIMITATIONS, BREACH OF CONTRACT, TORT, (INCLUDING NEGLIGENCE OR STREET LIABILITY) AND NOT WITHSTANDING ANY FAILURE OF ANY REMEDY HEREIN OF ITS ESSENTIAL PURPOSE, EVEN IF MATWELD WAS AWARE OF THIS POSSIBILITY OF SUCH DAMAGE. MATWELD'S LIMITED WARRANTY AS SET FORTH ABOVE SHALL NOT BE ENLARGED, DIMINISHED OR AFFECTED BY, AND NO OBLIGATION OR LIABILITY SHALL ARISE OR GO OUT OF THE RENDERING OF TECHNICAL ADVICE OR SERVICE BY MATWELD OR ITS AGENTS. THE FOREGOING MAY NOT BE CHANGED EXCEPT BY WRITTEN AGREEMENT SIGNED BY AN AUTHORIZED OFFICER OF MATWELD, THE REMEDIES SET FORTH HEREIN ARE EXCLUSIVE.

MATWELD, INC.

PHONE:(270) 444-0085

FAX:(270) 443-6180

Matweld reserves the right to change parts, features, or specifications without notice.

08300 SPIKE DRIVER

GENERAL NOTES:

CUSTOMER INFORMATION:

Name _____

Company _____

Serial # of your Matweld tool _____

(Upon receiving your Matweld tool, make sure to list serial number above so that a good record is kept for order information.)

MATWELD HYDRAULIC TOOL LIST

All Matweld Hydraulic Tools operate at 5 or 10 GPM @ 2000 PSI

POWER UNITS:

00100K – GASOLINE POWERED (1) 10 GPM OR (2) 5 GPM CIRCUITS

02900A – DIESEL (1) 10 GPM OR (2) 5 GPM CIRCUITS

(OPTIONAL CATALYTIC EXHAUST AND/OR MSHA CERTIFIED)

05500 – TWIN POWER DUAL CIRCUIT (1) 10 GPM OR (2) 5 GPM CIRCUITS & 5000 WATT GENERATOR

02050K – GASOLINE POWERED (1) 5 GPM

03700A – ELECTRIC POWER (1) 10 GPM OR (2) 5 GPM CIRCUITS

GRINDERS:

09200A – PRECISION FROG GRINDER

06000 – PROFILE GRINDER

06900 & 06900A – MULTI-PURPOSE GRINDER (TRIGGER VERSION AVAILABLE)

05900 – FROG/PROFILE GRINDER (TRIGGER VERSION AVAILABLE)

00700 – RAIL SURFACING GUIDE

04600 – STRAIGHT STONE CW ROTATION (TRIGGER VERSION AVAILABLE)

04700 – STRAIGHT STONE CCW ROTATION (TRIGGER VERSION AVAILABLE)

07500 – CHAMFER TOOL

04800 – CUP STONE GRINDER (TRIGGER VERSION AVAILABLE)

00600C – CUP STONE GRINDER

05400 – ANGLE GRINDER

05600 – BULL NOSE GRINDER

02400 – 10" OR 14" FROG AND SWITCH GRINDER

TRACK TOOLS:

03900A – REVERSING RAIL SAW

05100A & 05100B – POWER WELD SHEAR

03500 – SELF FEED RAIL DRILL

01600A – 5 GPM 1" IMPACT WRENCH

04500D – 1/2" HYDRAULIC DRILL IMPACT WRENCH

08200 – TAMPER

02800 – 60 TON BRIDGE SPREADER

01200 – SPRING ANCHOR APPLICATOR

01100A – SPIKE PULLER (SINGLE, 2 STAGE & TRIGGER VERSIONS AVAILABLE)

00800A – 16" RAIL SAW

05000 – HAND PUMP WELD SHEAR

01500 – RAIL DRILL

02500 – 10 GPM 1" IMPACT WRENCH

03100C – RAIL PULLER

08300 – SPIKE DRIVER

07650 – HYDRAULIC CLIP TOOL

OTHER PRODUCTS:

HYDRAULIC MANIFOLDS

HYDRAULIC TEST GAUGES

HOSE REELS

HYDRAULIC HOSES

ACCESSORIES

MATWELD, INC.

PHONE:(270) 444-0085

FAX:(270) 443-6180

Matweld reserves the right to change parts, features, or specifications without notice.