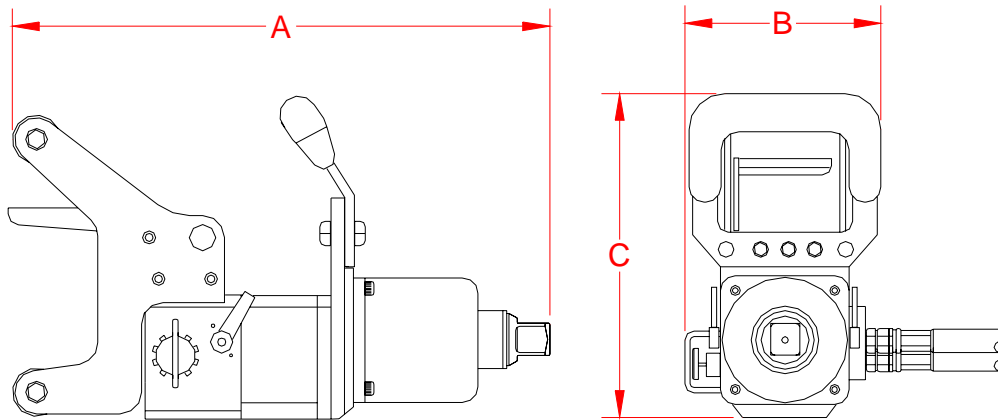
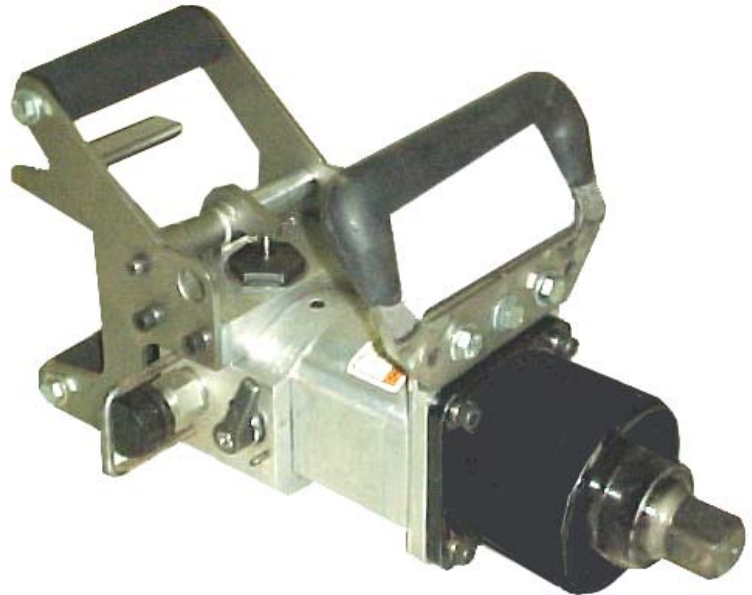


**02500 10 GPM
 1" IMPACT WRENCH**

The 1" Impact wrench is capable of handling the toughest jobs. Crossing, frog or track bolts are no problem for this rugged tool. Anti-vibration design and optional handle provide an efficient, safe and ergonomic work position for the task at hand. A torque adjustment knob "dials in" torque from 0-3500 ft lb. Designed for 5 or 10 gpm.



FLOW	PRESSURE	DIMENSIONS	WEIGHT
5 gpm (19 lpm) or 10 gpm (38 lpm)	2000 psi (140 bar)	A - 18" (457mm) B - 8" (203mm) C - 10" (254mm)	36 lbs (16.36 kg)

MATWELD, INC.

PHONE:(270) 444-0085

FAX:(270) 443-6180

Matweld reserves the right to change parts, features, or specifications without notice.

GENERAL SAFETY PRECAUTIONS:

TOOL OPERATORS AND MAINTENANCE PERSONNEL MUST ALWAYS COMPLY WITH THE SAFETY PRECAUTIONS GIVEN IN THIS MANUAL, AND WITH ALL STICKERS AND TAGS ATTACHED TO THE TOOL AND HOSE. ALL SAFETY PRECAUTIONS ARE GIVEN FOR YOUR SAFETY. READ TO UNDERSTAND AND FOLLOW ALL SAFETY, MAINTENANCE AND OPERATION INSTRUCTIONS BEFORE YOU USE OR MAINTAIN THE TOOL. REVIEW THE MANUAL DAILY BEFORE USING THE TOOL. IN ADDITION, FOLLOW ALL SAFETY GUIDELINES GIVEN TO YOU BY YOUR SUPERVISOR. DO NOT USE THE TOOL IF YOU HAVE ANY QUESTIONS ABOUT THE OPERATION, SAFETY OR MAINTENANCE OF THIS TOOL. FAILURE TO FOLLOW THESE INSTRUCTIONS CAN RESULT IN PERSONAL INJURY OR EQUIPMENT DAMAGE.

MATWELD HAS NO CONTROL OVER TOOL USE OR OPERATION ONCE IT LEAVES THE MATWELD PLANT. MATWELD HAS NO CONTROL OVER OPERATOR OR MAINTAINER SELECTION. THE CUSTOMER MUST ASSUME RESPONSIBILITY FOR THE TOOL'S SUITABILITY FOR A PARTICULAR FUNCTION, FOR ANYONE USING THE TOOL OR MAINTAINING THE TOOL REGARDING THEIR FITNESS TO USE THE TOOL OR REPAIR THE TOOL, UNDERSTANDING OF THE OPERATION AND SAFETY AND MAINTENANCE MANUAL, INTELLIGENCE TO USE GOOD JUDGMENT IS NECESSARY TO WORK SAFELY AND EFFICIENTLY WITHOUT ENDANGERING THEMSELVES OR BYSTANDERS IN THE WORK AREA.

- DO NOT OPERATE THE TOOL UNTIL YOU HAVE BEEN THOROUGHLY AND PROPERLY TRAINED OR UNDER THE SUPERVISION OF AN INSTRUCTOR.
- CHECK POWER SOURCE DAILY TO DETERMINE IF CORRECT FLOW AND PRESSURE ARE AVAILABLE. NEVER EXCEED FLOWS OR PRESSURES FOR THE TOOL BEING USED. PERSONAL INJURY OR DAMAGE TO THE TOOL CAN RESULT.
- OPERATORS MUST CLEAR THE WORK AREA OF NONESSENTIAL PERSONNEL. FLYING DEBRIS CAN CAUSE SERIOUS INJURY.
- THE OPERATOR MUST BE FAMILIAR WITH ALL PROHIBITED WORK AREAS SUCH AS UNSAFE GRADES, POOR FOOTING AREAS AND OVERHEAD HAZARDS.
- MAINTAIN BALANCE AND PROPER FOOTING AT ALL TIMES. NEVER OVERREACH TO THE EXTENT THAT A BROKEN PART OR SUDDEN MOVEMENT OF THE TOOL CAN CAUSE YOU TO LOSE YOUR BALANCE AND FALL, OR CAUSE INJURY TO YOUR SELF OR SOMEONE ELSE.

- WHEN WORKING NEAR ELECTRICAL CONDUCTORS, ALWAYS ASSUME THAT THE CONDUCTORS ARE ENERGIZED AND THAT HOSES AND CLOTHING CAN CONDUCT HARMFUL ELECTRICITY. USE HOSES LABELED AND CERTIFIED AS NONCONDUCTIVE.
- DO NOT OPERATE THE TOOL AT EXCESSIVE FLUID TEMPERATURES OPERATOR DISCOMFORT AND POTENTIAL BURNS CAN RESULT AT HIGH OIL TEMPERATURES.
- NEVER WEAR LOOSE CLOTHING THAT CAN GET ENTANGLED IN THE WORKING PARTS OF THE TOOLS OR BE CARELESS WITH HANDS, FEET OR OTHER BODY PARTS AROUND THE WORKING PARTS OF THE TOOLS. HYDRAULIC TOOLS EXERT HIGH TORQUE AND FORCE AND CAN CAUSE SERIOUS INJURY OR DEATH IF IMPROPERLY USED.
- TO AVOID PERSONAL INJURY OR EQUIPMENT DAMAGE, ALL TOOL REPAIR, MAINTENANCE OR SERVICE MUST ONLY BE PERFORMED BY AUTHORIZED AND PROPERLY TRAINED PERSONNEL.
- ALWAYS WEAR SAFETY EQUIPMENT SUCH AS OIL INJECTION RESISTANT WORK GLOVES, SAFETY GLASSES, SAFETY BOOTS, EAR PROTECTION AND OTHER SAFETY APPAREL DICTATED BY YOUR SUPERVISOR APPLICABLE FOR THE JOB YOU ARE DOING AND THE TOOL YOU ARE USING.
- DO NOT CLEAN INSPECT OR REPAIR THE TOOL WHILE CONNECTED TO THE POWER SOURCE. ACCIDENTAL ENGAGEMENT OF THE TOOL CAN CAUSE SERIOUS PERSONAL INJURY.
- OIL INJECTION HAZARD EXISTS WITH THIS TOOL. OIL INJECTION IS A CONDITION WHERE HYDRAULIC OIL IS INJECTED UNDER THE SKIN FROM PRESSURE IN THE LINE. ALWAYS WEAR GLOVES AND REPAIR ANY LEAKS IMMEDIATELY. NEVER CARRY A TOOL BY THE HOSES.
- DO NOT USE DAMAGED EQUIPMENT. IMMEDIATELY REPLACE ANY DAMAGED HOSES, FITTINGS, OR OTHER COMPONENTS SHOWING WIRE BRAID, NICKS, CUTS, DAMAGE OR ABRASIONS. FAILURE TO DO SO MAY RESULT IN EQUIPMENT DAMAGE AND / OR PERSONAL INJURY OR DEATH.
- CLEAN UP ANY OIL OR FLUID SPILLS IMMEDIATELY.

02500 IMPACT WRENCH

SAFETY PRECAUTIONS:

1. **ALWAYS** WEAR PROTECTIVE EQUIPMENT SUCH AS GLOVES, SAFETY GLASSES, EAR PROTECTION AND SAFETY SHOES.
2. DO NOT WEAR CLOTHING WHICH MAY BECOME ENTANGLED IN THE TOOL.
3. **ALWAYS** KEEP WORK AREA FREE OF TOOLS OR ANY OTHER OBJECTS WHICH MAY IMPAIR SOUND FOOTING.
4. **CAUTION** - OIL INJECTION HAZARD EXISTS WITH THIS TOOL. OIL INJECTION IS A CONDITION WHERE THE HYDRAULIC OIL IS FORCED UNDER THE SKIN THROUGH PRESSURE IN THE LINE. ALWAYS WEAR GLOVES AND REPAIR LEAKS IMMEDIATELY.
5. **DO NOT** CARRY THE TOOL BY THE PIGTAIL HOSES.
6. **DO NOT** OVER TORQUE TRACK AND FROG BOLTS.
7. **DO NOT** USE DEFECTIVE SOCKETS OR THOSE NOT MANUFACTURED FOR IMPACT WRENCHES.
8. DO NOT ATTEMPT TO LOOSEN **LOCKED UP** WRENCH WITH ANY HAND TOOL. DISCONNECT FROM POWER SOURCE AND **THEN** REPAIR WRENCH.
9. USE A SOCKET RETAINING RING TO KEEP SOCKET ON THE ANVIL.

02500 IMPACT WRENCH

FLOW: 10 GPM (38 LPM)
PRESSURE: 2000 PSI (140 BAR)
BACK PRESSURE: MAX 150 PSI

OPERATION:

1. WITH THE POWER SOURCE IN THE "OFF" POSITION, CONNECT THE HOSES. DO NOT DRAG THE SERVICE HOSE BY PULLING WITH THE TOOL. LOOP THE SERVICE HOSE IN THE WORK AREA IN SUCH A WAY TO RELIEVE STRESS ON THE HOSE AND QUICK DISCONNECT FITTINGS WHILE WORKING. BE AWARE OF HOSE LOCATION AT ALL TIMES.
2. CONNECT THE TOOL TO THE POWER SOURCE.
3. TURN THE POWER SOURCE "ON" TO SUPPLY 10 GPM TO TOOL.
4. TO TIGHTEN BOLTS, PUSH THE LEVER HANDLE (LOCATED ON BOTH SIDES OF IMPACT WRENCH MANIFOLD) FORWARD. TO LOOSEN BOLT, PULL LEVER HANDLE BACK.
5. PULL THE TRIGGER UP TO START THE WRENCH.
6. **NEVER** OPERATE THE TOOL ON ANY HIGHER FLOW THAN 10 GPM. THE TOOL IS DESIGNED TO ACCEPT ONLY THE RECOMMENDED 10 GPM AND WILL MALFUNCTION AND OVERHEAT THE OIL IF USED OTHERWISE.
7. TURN THE POWER SOURCE "**OFF**" BEFORE DISCONNECTING WRENCH.

02500 IMPACT WRENCH

MAINTENANCE

1. CHECK TOOL **DAILY** FOR PROPER OPERATION, LEAKS, OR DAMAGE.
2. INSPECT HOSES **DAILY**. REPLACE CUT, BURNED, OR OTHERWISE DAMAGED HOSES.
3. KEEP QUICK DISCONNECT COUPLERS **CLEAN AND LUBRICATED**.
4. USE HYDRAULIC FLUIDS THAT COMPLY WITH HTMA SPECIFICATION 5.7, THE HYDRAULIC FLUID SHOULD HAVE A VISCOSITY BETWEEN 100 AND 400 SSU (20-82 CENTISTOKES) AT THE MAXIMUM AND MINIMUM EXPECTED OPERATING TEMPERATURES. PETROLEUM BASED HYDRAULIC FLUIDS WITH ANTI-WEAR PROPERTIES AND A VISCOSITY INDEX OF 140 WORK FOR A WIDE RANGE OF OPERATING CONDITIONS.

THE FOLLOWING OILS MEET HTMA SPECIFICATION 5.7:

AMOCO RYKON MV	CITGO A/W ALL TEMP
SUNVIS 706	MOBIL D.T.E. 13
CHEVRON EP-MV	TEXACO "RANDO" HDAZ

OTHER FLUIDS THAT MEET OR EXCEED THIS SPECIFICATION CAN BE USED.

*SEE **COLD WEATHER OPERATION** HYDRAULIC OIL NOTE.

5. HAVE TOOL INSPECTED, AT LEAST ANNUALLY, BY MATWELD OR A MATWELD QUALIFIED SERVICE REPRESENTATIVE TO DETERMINE IF TOOL IS IN NEED OF SAFETY CHANGES OR WORN PART REPLACEMENT.
6. CONTACT MATWELD ON A PERIODIC BASIS, AT LEAST ANNUALLY, FOR SERVICE BULLETINS, SAFETY NOTICES, OR OTHER IMPORTANT INFORMATION PERTAINING TO THIS TOOL.
7. THE IMPACT ASSEMBLY MUST BE REPACKED WITH GREASE ON A REGULAR BASIS.

A GOOD RULE OF THUMB IS:

CASUAL USAGE REPACK EVERY **60** DAYS

HEAVY USAGE REPACK EVERY **30** DAYS

8. THE HAMMERING MECHANISM SHOULD BE ROUTINELY INSPECTED FOR WEAR AND PROPER LUBRICATION. THIS ASSEMBLY IS EASILY ACCESSED BY REMOVING THE (4) SOCKET HEAD CAP SCREWS THAT ATTACH THE HAMMER HOUSING TO THE TOOL BODY.

PACK GREASE INTO THE HAMMER FRAME ASSURING THAT ALL PARTS ARE LIBERALLY COATED. USE A HIGH TEMPERATURE, MOLYBDENUM BASE, AND LITHIUM COMPOUND GREASE.

REINSTALL USING A REMOVABLE THREAD LOCKER ON THE (4) SCREWS AND TORQUE TO 25 FT LBS.

COLD WEATHER OPERATION:

HYDRAULIC SYSTEM PERFORMANCE IS AFFECTED WHEN THE TEMPERATURE DROP BELOW 50 F. THEREFORE MEASURES SHOULD BE TAKEN TO PRE-WARM TOOLS AND FLUIDS BEFORE OPERATING.

MATWELD, INC.

PHONE:(270) 444-0085

FAX:(270) 443-6180

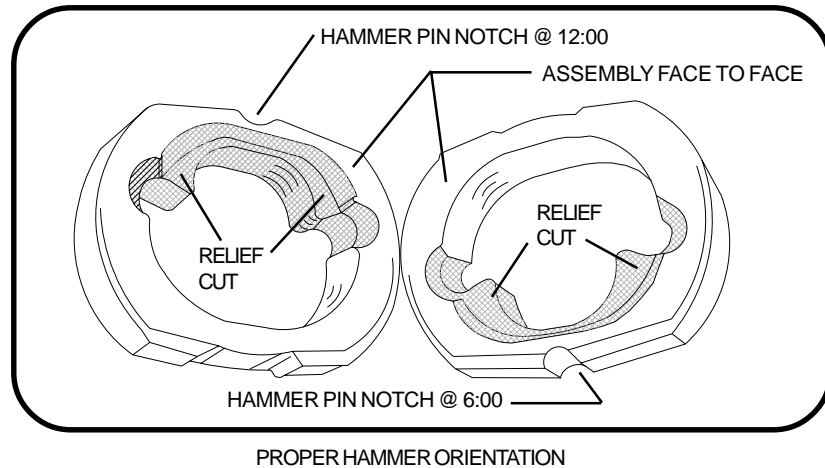
Matweld reserves the right to change parts, features, or specifications without notice.

02500 IMPACT WRENCH

HAMMER INSTALLATION:

ALTHOUGH THE HAMMERS ARE IDENTICAL PARTS, THEY MUST BE INSTALLED IN OPPOSING POSITIONS FOR PROPER OPERATION.

THE RELIEF CUT SIDES WILL FACE EACH OTHER WHEN PROPERLY FITTED INSIDE THE HAMMER FRAME, BUT THE HAMMER PIN NOTCH WILL BE ASSEMBLED 180° APART WITH (1) AT THE 12:00 POSITION AND THE OTHER AT THE 6:00 POSITION.



REPAIR TROUBLESHOOTING:

1. IMPACT WRENCH OVERHEATS...
 - OPERATE WRENCH ON 10 GPM
2. IMPACT WRENCH SPINS BUT WON'T IMPACT...
 - INSPECT FRONT END FOR BROKEN HAMMER PINS OR OTHER BROKEN PARTS.
3. IMPACT WRENCH ONLY WORKS IN ONE DIRECTION...
 - CHECK FRONT END FOR BROKEN PARTS
 - CHECK REVERSING VALVE FOR TRASH ON ONE OR MORE VALVE PARTS
4. IMPACT WRENCH WORKS SLOW AND HAS LOW POWER...
 - CHECK THAT TORQUE ADJUSTMENT VALVE IS SCREWED IN AND **NOT** ADJUSTED ALL THE WAY OUT.
 - CHECK THAT FLOW IS 10 GPM AND SYSTEM PRESSURE IS SET AT 2000 PSI
5. TRIGGER STICKS...
 - CHECK FOR DIRT OR CLEARANCE IN TRIGGER HOUSING
 - CHECK FOR REVERSE FLOW (PIGTAILS OR QD'S RECENTLY CHANGED)
 - CHECK BACK PRESSURE ON RETURN LINE (AT TOOL RETURN SHOULD BE 150 PSI OR LESS).
6. HYDRAULIC OIL RUNNING OUT OF FRONT END...
 - REPLACE FRONT SHAFT SEAL USING PART NO. 01612 SHAFT SEAL KIT.

MATWELD, INC.

PHONE:(270) 444-0085

FAX:(270) 443-6180

Matweld reserves the right to change parts, features, or specifications without notice.

02500 IMPACT WRENCH

TORQUE / TENSION CALIBRATION PROCEDURE:

(USING MATWELD PART #01650 – TORQUE GAUGE)

1. INSTALL TEST GAUGE IN PRESSURE LINE AT TOOL AND CONNECT TO POWER SOURCE SUPPLY HOSES – 5 GPM.
2. REFER TO BOLT TIGHTENING CHART SPECIFICATION REQUIRED FOR THE GRADE AND SIZE BOLT BEING USED. *(ALWAYS FOLLOW MANUFACTURER'S RECOMMENDATIONS.)*
3. LOOSEN LOCK COLLAR ON TORQUE ADJUSTMENT KNOB.
4. IF TORQUE ADJUSTMENT KNOB IS TURNED ALL THE WAY IN, BACK ADJUSTMENT KNOB OUT ONE AND A HALF TURNS **COUNTERCLOCKWISE** TO DECREASE INITIAL TORQUE.
5. BEGIN TIGHTENING BOLT, KEEPING A CLOSE WATCH ON THE TORQUE GAUGE. TURN THE ADJUSTMENT KNOB IN **CLOCKWISE** INCREASING THE PRESSURE UNTIL THE DESIRED SETTING IS REACHED.
6. LOOSEN AND RETIGHTEN THE TEST BOLT A COUPLE OF TIMES TO VERIFY THE SETTING.
7. RETIGHTEN THE LOCK COLLAR.
8. TORQUE GAUGE MAY BE REMOVED ONCE DESIRED TORQUE IS SET.

02500 IMPACT WRENCH

MATWELD IMPACT WRENCH – 1” SQUARE DRIVE

TORQUE / TENSION CALIBRATION

WARNING!!!!!!

OVER-TORQUING BOLTS WILL CAUSE BOLT FAILURE UNDER TRAFFIC.

GRADE 5 – TRACK AND FROG BOLTS:

SIZE	WRENCH PSI	TORQUE FT. LB.	TENSION LB.
3/4”	460	300	21,500
7/8”	500	485	29,500
1”	540	730	39,000
1 1/8”	565	900	46,000
1 3/8”	750	1700	69,000

GRADE 8 – TRACK AND FROG BOLTS:

SIZE	WRENCH PSI	TORQUE FT. LB.	TENSION LB.
3/4”	470	400	28,000
7/8”	525	640	36,000
1”	600	960	50,000
1 1/8”	670	1360	63,000
1 3/8”	890	2500	95,000

NOTE:

REFER TO THE WRENCH CALIBRATION INSTRUCTIONS ON THE PREVIOUS PAGE OR FOLLOW GUIDELINES SET FORTH BY THE RAILROAD. IF THE TORQUE SETTING OF A PARTICULAR FASTENER TYPE IS CRITICAL, THE WRENCH SHOULD BE SET AS CLOSE TO THE DESIRED TORQUE AS POSSIBLE AND A CALIBRATED TORQUE WRENCH USED TO VERIFY OR CHECK THE FASTENER TORQUE PERIODICALLY.

REVIEW OF HYDRAULIC PRINCIPLES

A. TOOL CIRCUIT

1. HYDRAULIC FORMULAS:

$$\text{GPM} = \frac{\text{CID} \times \text{RPM}}{231} \qquad \text{HP} = \frac{\text{GPM} \times \text{PSI}}{1456.9}$$

Example: HP required to deliver 10 GPM at 1500 PSI.

$$\frac{10 \text{ GPM} \times 1500 \text{ PSI}}{1456.9} = \frac{15000}{1456.9} = 10.3 \text{ HP}$$

(subtract back pressure for tool HP)

Estimated HP delivered by pump or used by tool.

GPM	PSI	500	1,000	1,500	2,000	2,500	3,000
3		1.03	2.06	3.09	4.12	5.15	6.18
5		1.72	3.43	5.15	6.86	8.58	10.30
10		3.43	6.86	10.3	13.70	17.20	20.60
15		5.15	10.30	15.40	20.60	25.70	30.90

2. BACK PRESSURE

BACK PRESSURE MEASURED AT THE TOOL RETURN PORT MUST NOT EXCEED THE MANUFACTURERS BACK PRESSURE RATING. MOST MANUFACTURERS LIST THE MAXIMUM BACK PRESSURE FOR THEIR HYDRAULIC TOOLS AT 250 PSI. BACK PRESSURE MEASURED ON THE RETURN SIDE OF THE TOOL IS THE FORCE REQUIRED TO GET THE OIL BACK TO THE TANK. IN ALMOST ALL CASES THE LOWER THE BACK PRESSURE THE BETTER THE TOOL PERFORMANCE. FIRST, THE BACK PRESSURE IS SUBTRACTED FROM THE MAXIMUM TOOL PRESSURE TO ARRIVE AT A MAXIMUM TOOL OPERATING PRESSURE. FOR EXAMPLE, TOOLS WITH 2000 PSI OPERATING PRESSURE ARE INSTALLED ON A SYSTEM WITH 250 PSI BACK PRESSURE. THIS LEAVES 1750 PSI AS A MAXIMUM TOOL PRESSURE. IMAGINE A SYSTEM WITH 500 PSI BACK PRESSURE. 2000 MINUS 500 PSI BACK PRESSURE LEAVES ONLY 1500 PSI FOR THE TOOL. SECOND, TOOLS ARE DESIGNED FOR PRESSURE TO BUILD ON THE PRESSURE SIDE OF THE TOOL. IF TOO MUCH PRESSURE BUILDS ON THE RETURN SIDE, NOT ONLY IS PERFORMANCE EFFECTED, BUT SEALS MAY BLOW. THIS IS WHY IT IS VERY IMPORTANT TO DIRECT THE FLOW INTO THE TOOL CORRECTLY. REVERSING THE HOSES TO TEST MAY RESULT IN BLOWN SEALS, DAMAGE TO THE TOOL, AND PERSONAL INJURY.

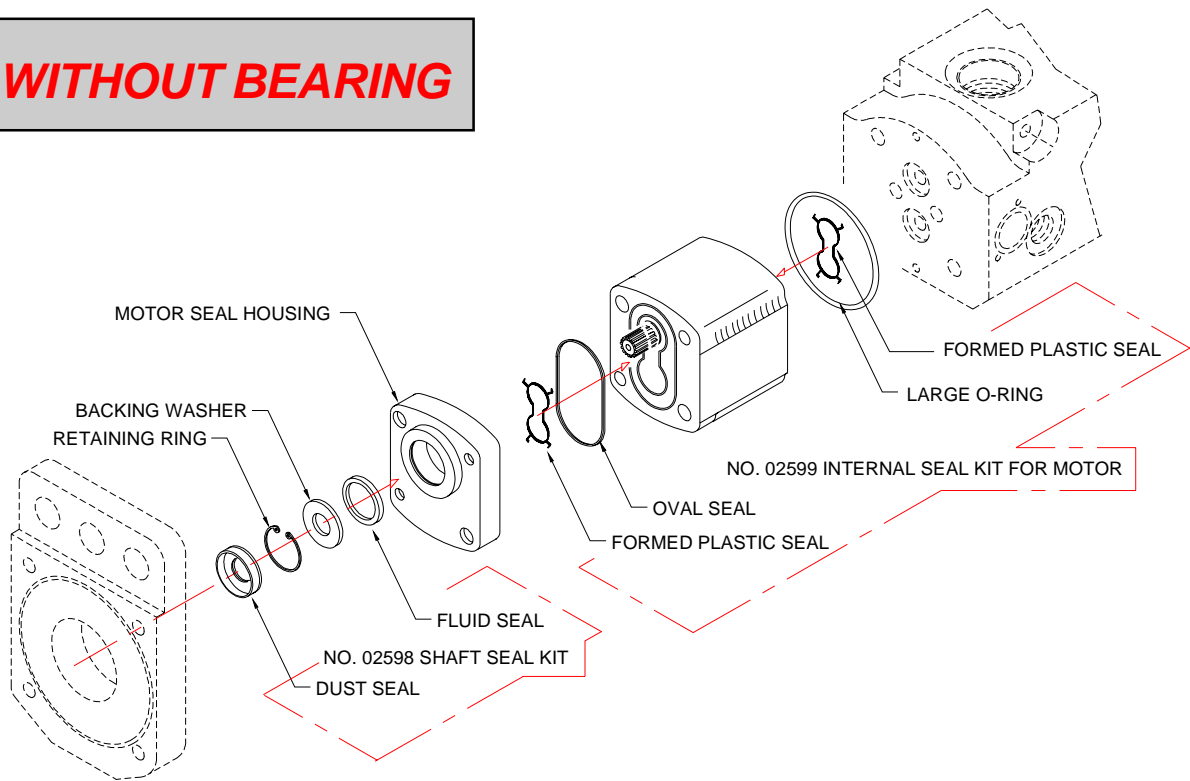
02500 IMPACT WRENCH

GENERAL NOTES:

SEAL KIT INFORMATION

SEAL KIT FOR MOTORS WITHOUT BEARING MANUFACTURED AFTER APRIL 2003

WITHOUT BEARING



CALL MATWELD BEFORE ORDERING IF YOU HAVE QUESTIONS CONCERNING WHICH MOTOR YOU HAVE

MATWELD, INC.

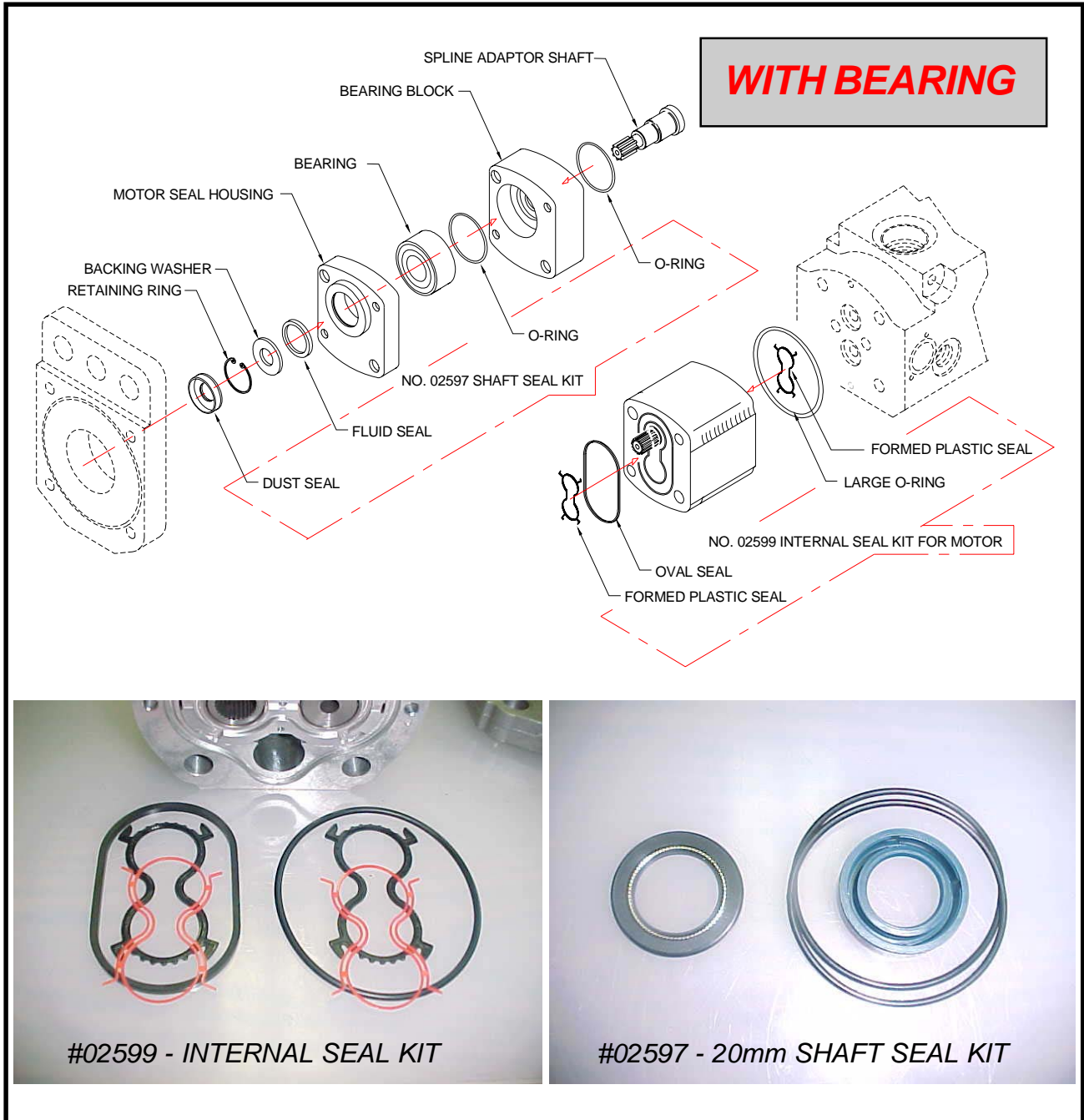
PHONE:(270) 444-0085

FAX:(270) 443-6180

Matweld reserves the right to change parts, features, or specifications without notice.

SEAL KIT INFORMATION

SEAL KIT FOR MOTORS WITH BEARINGS MANUFACTURED AFTER APRIL 2003



CALL MATWELD BEFORE ORDERING IF YOU HAVE QUESTIONS CONCERNING WHICH MOTOR YOU HAVE

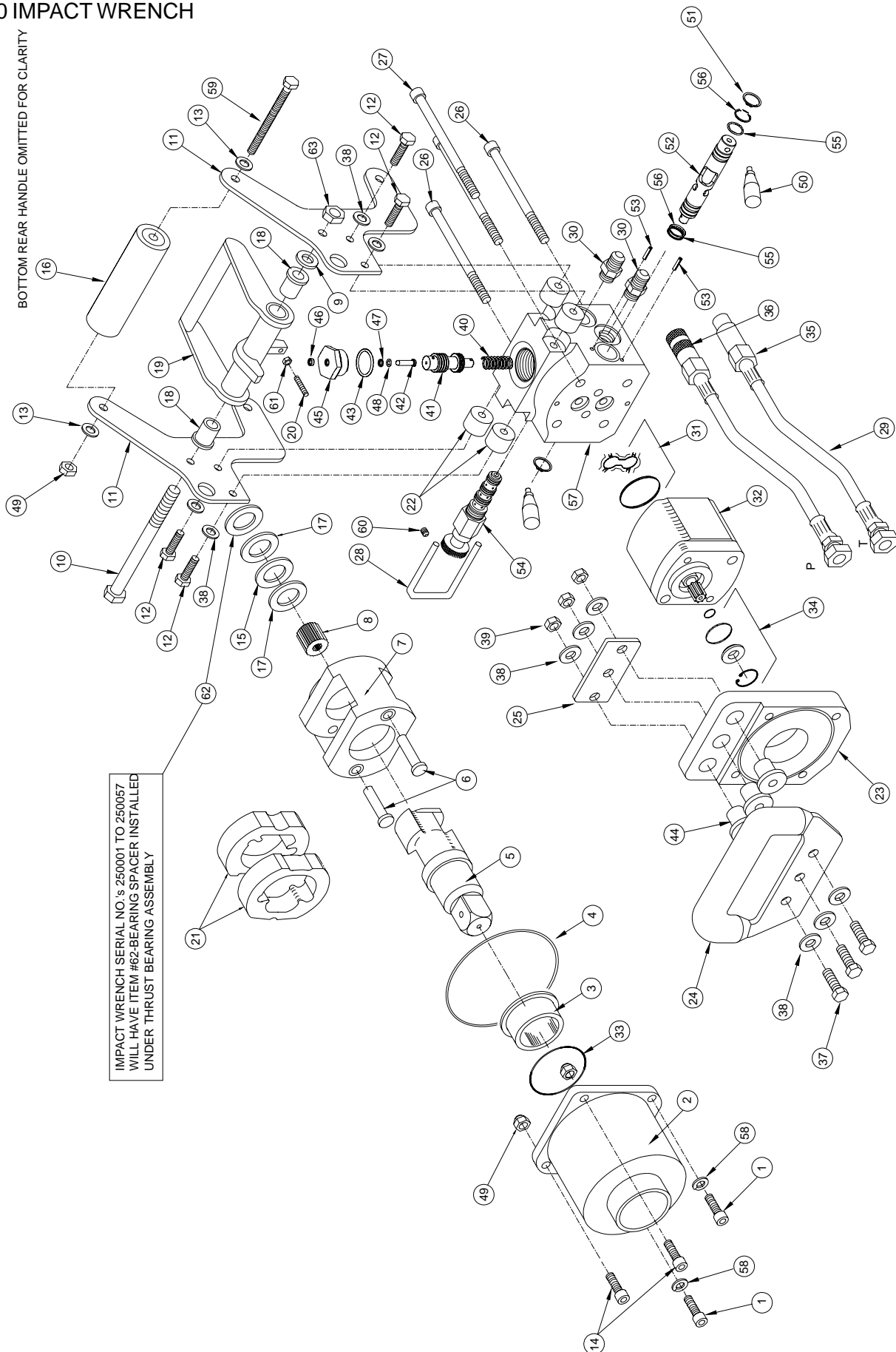
MATWELD, INC.

PHONE:(270) 444-0085

FAX:(270) 443-6180

Matweld reserves the right to change parts, features, or specifications without notice.

02500 IMPACT WRENCH



MATWELD, INC.

PHONE:(270) 444-0085

FAX:(270) 443-6180

Matweld reserves the right to change parts, features, or specifications without notice.

02500 IMPACT WRENCH

ITEM NO.	PART NO.	DESCRIPTION	QTY.
*1	A5448	5/16-18 x 1 SHCS	2
*2	01603	HAMMER CASE w/BUSHING	1
*3	01604	HAMMER CASE BUSHING	1
*4	01630	O-RING HAMMER CASE	1
*5	01605	ANVIL 1" SQUARE DRIVE	1
*6	01606	HAMMER PIN	2
*7	01608	HAMMER FRAME	1
*8	01609A	SPLINE ADAPTER	1
9		OMIT	
10	A1098	1/2-13 X 6 HEX HEAD BOLT	1
11	02505	SIDE HANDLE	2
12	A1045	3/8-16 x 1 3/4 HEX HEAD BOLT	4
13	A2191	5/16 SAE FLAT WASHER	4
14	A5449	5/16-18 x 1 1/4 SHCS	2
15	02513	THRUST BEARING	1
16	02508	HANDLE	2
17	02512	THRUST BEARING WASHER	2
18	02507	1/2" FLANGED BRONZE BUSHING	2
19	02503	TRIGGER ASSEMBLY	1
20	A6330	#10-24 x 1 BHCS	1
21	01607	HAMMER	2
22	02506	ISOLATION PADS	4
23	01613D	MOTOR HANDLE ADAPTER	1
24	02509	FRONT HANDLE	1
25	02510	RETAINING PLATE	1
26	A5480	3/8-16 x 6 1/2 SHCS	2
27	A5485	3/8-16 x 7 SHCS	2
28	02511	PROTECTION BAR	1
29	00816	PIG TAIL HOSE ASSEMBLY	2
30	315-08-08	1/2 NPT x #8 MJIC HEX NIPPLE	2
31	02599	INTERNAL SEAL KIT	1
32	02502	HYDRAULIC MOTOR	1
33	03519	O-RING	1
34	02598	SHAFT SEAL KIT	1
35	00146	Q.D. NIPPLE	1
36	00145	Q.D. COUPLER	1
37	A1046	3/8-16 x 2 HEX HEAD BOLT	3
38	A2192	3/8 SAE FLAT WASHER	10
39	A2050	3/8-16 NYLOCK NUT	3
40	02501-03	SPRING	1
41	02501-04	SPOOL PLUNGER	1
42	02501-05	PIN ACTUATOR	1
43	02501-06	O-RING AS 568-916	1
44	A3816	WELL NUT - RUBBER WASHER	3
45	02501-02	PLUG END	1
46	02501-07	WIPER RING	1
47	02501-08	BACK UP WASHER	1
48	02501-09	O-RING AS 568-010	1
49	A2048	5/16-18 NYLOCK NUT	4
50	02501-10	HANDLE	2
51	02501-11	EXTERNAL RETAINING RING	2
52	02501-12	DIRECTIONAL SPOOL	1
53	02501-13	SPRING ROLL PIN	4
54	02501-01	TORQUE ADJUSTMENT VALVE	1
55	02501-14	O-RING	2
56	02501-15	BACK UP RING	2
57	02501	MANIFOLD	1
58	A3812	5/16 HIGH COLLAR LOCK WASHER	2
59	A1039	5/16-18 x 6 HEX HEAD BOLT	2
60	A5602	1/4--20 x 5/16 SET SCREW	4
61	A6749	#10-24 HEX NUT	1
62	02514	BEARING SPACER	1
63	A2054	1/2-13 NYLOCK NUT	1

MATWELD, INC.

PHONE:(270) 444-0085

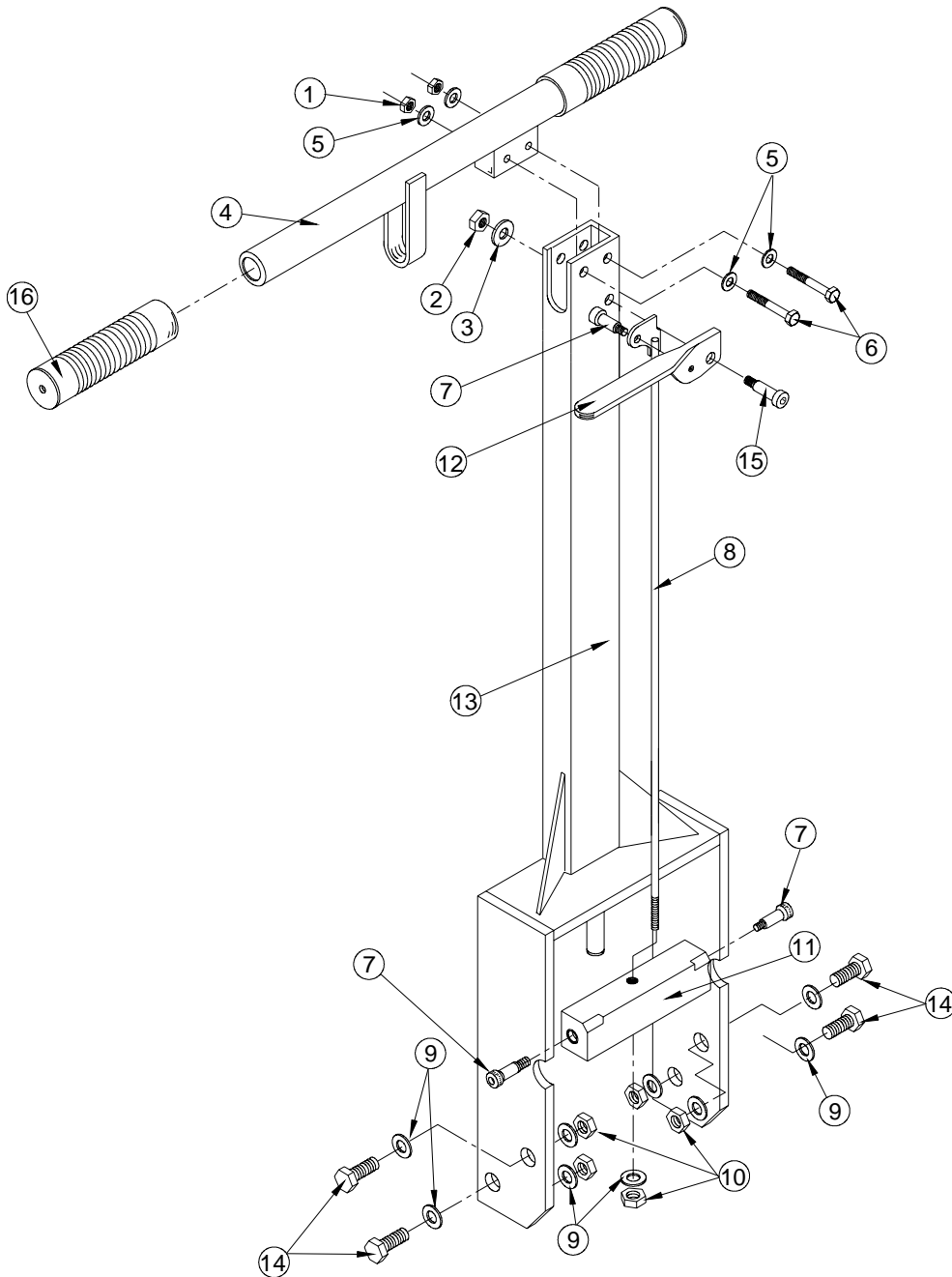
FAX:(270) 443-6180

Matweld reserves the right to change parts, features, or specifications without notice.

02575 IMPACT WRENCH

STAND UP HANDLE:
5/3/04

ITEM NO.	PART NO.	DESCRIPTION	QTY.
1	A2046	1/4-20 NYLOCK NUT	2
2	A2048	5/16-18 NYLOCK NUT	1
3	A2191	5/16 SAE FLAT WASHER	1
4	01636	HANDLE ASSEMBLY	1
5	A2190	1/4 SAE FLAT WASHER	4
6	A1004	1/4-20 x 1 1/2 HEX HEAD BOLT	2
7	A6930	DIA. 3/8 x 1 SHOULDER BOLT	3
8	01638	ACTUATOR ROD ASSEMBLY	1
9	A2192	3/8 SAE FLAT WASHER	9
10	A2050	3/8-16 NYLOCK NUT	5
11	02516	ACTUATOR BAR	1
12	01640	TRIGGER	1
13	02515	EXTENSION ARM WELDMENT	1
14	A1042	3/8-16 x 1 HEX HEAD BOLT	4
15	A6930	DIA. 3/8 x 1 SHOULDER BOLT	1
16	00106	HANDLE GRIP	2



MATWELD, INC.

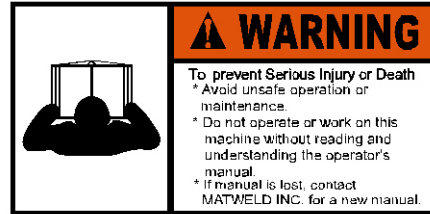
PHONE:(270) 444-0085

FAX:(270) 443-6180

Matweld reserves the right to change parts, features, or specifications without notice.

02500 IMPACT WRENCH

DECAL LEGEND:



LIMITED WARRANTY

MATWELD, INC., PADUCAH, KY., WARRANTS TO THE ORIGINAL PURCHASE OF THIS PRODUCT THAT THE PRODUCT WILL BE FREE FROM DEFECTS IN MATERIAL AND WORKMANSHIP FOR THE PERIOD OF ONE (1) YEAR AFTER THE DELIVERY OF SUCH PRODUCT TO THE CUSTOMER. OTHER EQUIPMENT AND PARTS USED, BUT NOT MANUFACTURED BY MATWELD INC. ARE COVERED DIRECTLY BY THE WARRANTY OF THE MANUFACTURER OF THOSE PRODUCTS. PROOF OF PURCHASE MUST BE DOCUMENTED INCLUDING REFERENCE TO A SERIAL NUMBER LOCATED ON EACH TOOL. THE PURCHASER'S ONLY REMEDIES UNDER THIS LIMITED WARRANTY SHALL BE LIMITED AT MATWELD'S SOLE OPTION TO THE FOLLOWING: REPAIR, REPLACEMENT OR REFUND OF THE PURCHASE PRICE OF THE DEFECTIVE PRODUCTS. EACH OF THESE REMEDIES REQUIRES TIMELY NOTIFICATION OF THE DEFECT IN THE PRODUCT AND SUBSTANTIATION THAT THE PRODUCT HAS BEEN PROPERLY STORED, MAINTAINED AND USED. MATWELD'S OBLIGATIONS HEREUNDER EXTEND ONLY TO THE PURCHASER OF THE PRODUCT AND NOT TO ANY THIRD PARTY.

AS A CONDITION PRECEDENT TO MATWELD'S OBLIGATION HEREUNDER, THE DEFECTIVE PRODUCT MUST NOT HAVE BEEN ALTERED OR MODIFIED WITHOUT THE EXPRESS WRITTEN APPROVAL OF MATWELD, INC. THE PRODUCT MUST NOT HAVE BEEN SUBJECTED TO DELIBERATE DAMAGE, SHIPPING DAMAGE, NEGLIGENCE, TAMPERING BY UNAUTHORIZED PERSONNEL OR DAMAGE BY IMPROPER USE, STORAGE OR MAINTENANCE. SERIAL NUMBERS MUST NOT HAVE BEEN ALTERED, DEFACED OR REMOVED. SUCH ACTION VOIDS LIMITED WARRANTY.

EXCLUSIONS TO LIMITED WARRANTY

THIS LIMITED WARRANTY IS EXCLUSIVE AND IS IN LIEU OF ANY OTHER WARRANTY, WRITTEN OR ORAL, EXPRESSED OR IMPLIED, INCLUDING, WITHOUT LIMITATION, ANY IMPLIED WARRANTY OR MERCHANTABILITY OR FITNESS FOR A PARTICULAR PURPOSE.

LIMITED WARRANTY DOES NOT COVER NORMAL WEAR AND TEAR ITEMS SUCH AS FILTERS, HOSES, COUPLERS, BITS, SOCKETS, AUGERS, AND BATTERIES.

LIMITATION OF LIABILITY

EXCEPT AS PROVIDED ABOVE, MATWELD SHALL IN NO EVENT BE LIABLE OR RESPONSIBLE FOR ANY INJURY, LOSS OR DAMAGE, DIRECT, INCIDENTAL OR CONSEQUENTIAL, ARISING OUT OF THE USE OR MISUSE OR INABILITY TO USE THE PRODUCT, HOWEVER CAUSED AND ON ANY THEORY OF LIABILITY INCLUDING, WITHOUT LIMITATIONS, BREACH OF CONTRACT, TORT, (INCLUDING NEGLIGENCE OR STREET LIABILITY) AND NOT WITHSTANDING ANY FAILURE OF ANY REMEDY HEREIN OF ITS ESSENTIAL PURPOSE, EVEN IF MATWELD WAS AWARE OF THIS POSSIBILITY OF SUCH DAMAGE. MATWELD'S LIMITED WARRANTY AS SET FORTH ABOVE SHALL NOT BE ENLARGED, DIMINISHED OR AFFECTED BY, AND NO OBLIGATION OR LIABILITY SHALL ARISE OR GO OUT OF THE RENDERING OF TECHNICAL ADVICE OR SERVICE BY MATWELD OR ITS AGENTS. THE FOREGOING MAY NOT BE CHANGED EXCEPT BY WRITTEN AGREEMENT SIGNED BY AN AUTHORIZED OFFICER OF MATWELD, THE REMEDIES SET FORTH HEREIN ARE EXCLUSIVE.

MATWELD, INC.

PHONE:(270) 444-0085

FAX:(270) 443-6180

Matweld reserves the right to change parts, features, or specifications without notice.

IMPORTANT SAFETY NOTICE

PLEASE OBEY IT'S THE LAW!

YOU MUST WEAR EYE PROTECTION. ALL HAMMER OPERATIONS REQUIRE EYE PROTECTION FOR BOTH THE USER OF THE TOOL, AND BY OTHERS WHO MAY BE EXPOSED TO THE FLYING PARTICLES. THE OCCUPATIONAL SAFETY AND HEALTH ADMINISTRATION (OSHA) IS CHARGED TO ENFORCE THE MANDATED CODE OF FEDERAL REGULATIONS GOVERNING THE USE OF EYE PROTECTION DURING HAMMERING OPERATIONS.

1. NEVER USE A MODIFIED, DAMAGED, WELDED, ABUSED, OR WORN HAMMER ACCESSORY TOOL.
2. USE ACCESSORY TOOL **ONLY** WITH THE HYDRAULIC TOOL IT IS DESIGNED FOR.
3. NEVER STRIKE ACCESSORY WITH ANY HAND HELD INSTRUMENT AND BE CAREFUL DURING TRANSPORT AND MOVEMENT NOT TO STRIKE THE TOOL AGAINST ANOTHER HARDENED SURFACE.
4. MAKE SURE THAT THE ACCESSORY IS PROPERLY SECURED WITH THE DESIGNED RETAINER. THE RETAINER SHOULD NEVER BE USED IF IT IS DAMAGED OR WORN.
5. DO NOT COME IN PHYSICAL CONTACT WITH THE WORKING END OF AN ACCESSORY DURING OPERATION OF THE HAMMER. ALWAYS WEAR SAFETY BOOTS AND APPAREL DURING HAMMERING OPERATIONS.
6. INSPECT SHANKS AND ADAPTERS DAILY AND REPLACE IF ANY INDICATIONS OF FATIGUE OR WEAR ARE FOUND.
7. NEVER LEAN ON TOOL OR USE IT FOR PRYING.

**ALL OF THE ABOVE
SHOULD BE REVIEWED
WITH AND UNDERSTOOD
BY THE END USER OF
THIS PRODUCT!**

CUSTOMER INFORMATION:

Name _____

Company _____

Serial # of your Matweld tool _____

(Upon receiving your Matweld tool, make sure to list serial number above so that a good record is kept for order information.)

MATWELD HYDRAULIC TOOL LIST

All Matweld Hydraulic Tools operate at 5 or 10 GPM @ 2000 PSI

POWER UNITS:

00100K – GASOLINE POWERED 1-10 GPM OR 2-5 GPM

02900A – DIESEL 1-10 GPM OR 2-5 GPM

(OPTIONAL CATALYTIC EXHAUST AND/OR MSHA CERTIFIED)

05500 – TWIN POWER DUAL CIRCUIT 1-10 GPM OR 2-5 GPM & 5000 WATT GENERATOR

02050K – GASOLINE POWERED 1-5 GPM

03700A – ELECTRIC POWER 1-10 GPM OR 2-5 GPM

GRINDERS:

09200A – PRECISION FROG GRINDER

06000 – PROFILE GRINDER

06900 & 06900A – MULTI-PURPOSE GRINDER (TRIGGER VERSION AVAILABLE)

05900 – FROG/PROFILE GRINDER (TRIGGER VERSION AVAILABLE)

00700 – RAIL SURFACING GUIDE

04600 – STRAIGHT STONE CW ROTATION (TRIGGER VERSION AVAILABLE)

04700 – STRAIGHT STONE CCW ROTATION (TRIGGER VERSION AVAILABLE)

07500 – CHAMFER TOOL

04800 – CUP STONE GRINDER (TRIGGER VERSION AVAILABLE)

00600C – CUP STONE GRINDER

05400 – ANGLE GRINDER

05600 – BULL NOSE GRINDER

02400 – 10" OR 14" FROG AND SWITCH GRINDER

TRACK TOOLS:

03900A – REVERSING RAIL SAW

05100A & 05100B – POWER WELD SHEAR

03500 – SELF FEED RAIL DRILL

01600A – 5 GPM 1" IMPACT WRENCH

04500D – HYDRAULIC DRILL IMPACT WRENCH

08200 – TAMPER

02800 – 60 TON BRIDGE SPREADER

01200 – SPRING ANCHOR APPLICATOR

01100A – SPIKE PULLER (SINGLE, 2 STAGE & TRIGGER VERSIONS AVAILABLE)

00800A – 16" RAIL SAW

05000 – HAND PUMP WELD SHEAR

01500 – RAIL DRILL

02500 – 10 GPM 1" IMPACT WRENCH

03100C – RAIL PULLER

08300 – SPIKE DRIVER

07650 – HYDRAULIC CLIP TOOL

OTHER PRODUCTS:

HYDRAULIC MANIFOLDS

HYDRAULIC TEST GAUGES

HOSE REELS

HYDRAULIC HOSES

ACCESSORIES

MATWELD, INC.

PHONE:(270) 444-0085

FAX:(270) 443-6180

Matweld reserves the right to change parts, features, or specifications without notice.