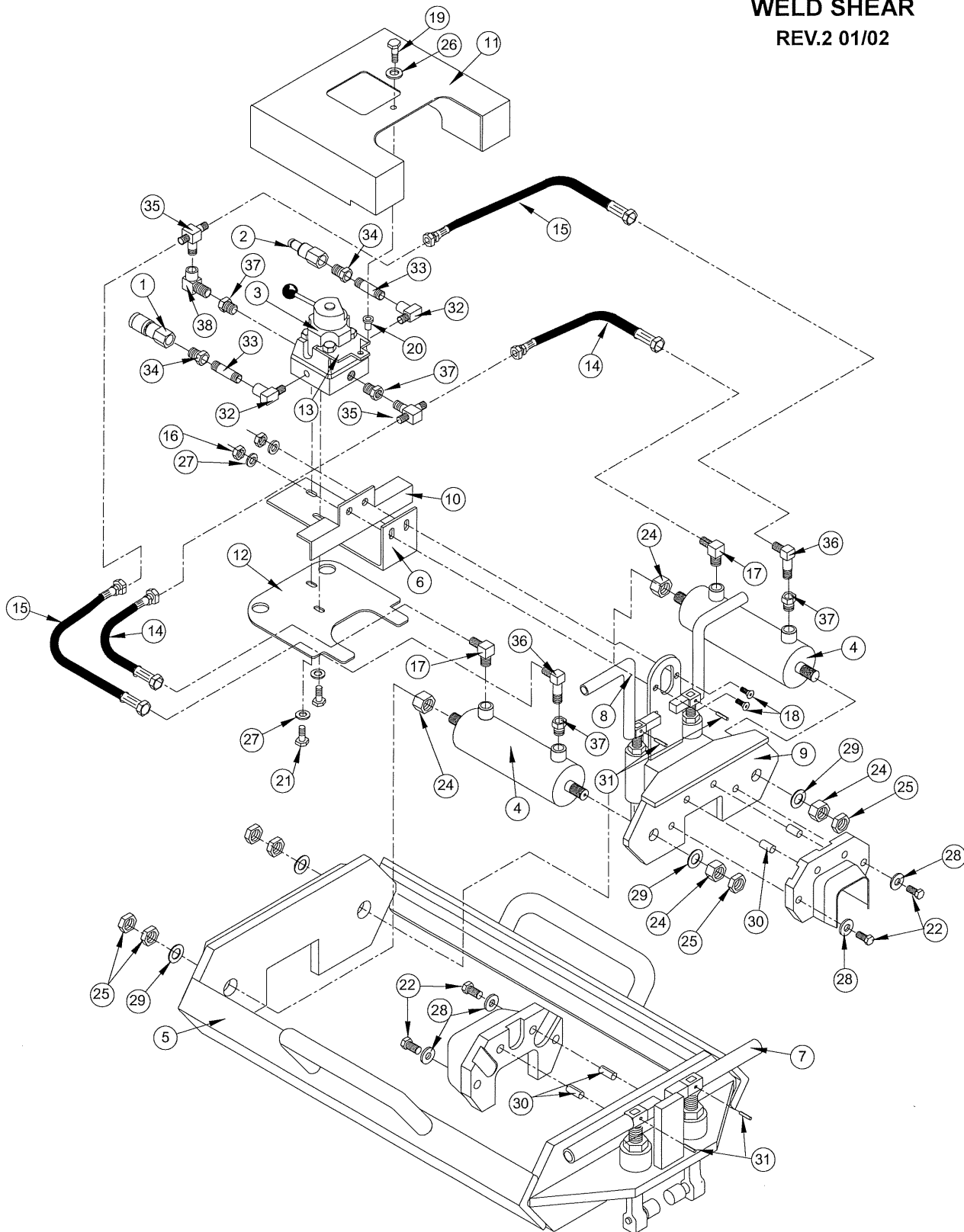


**05100A  
WELD SHEAR  
REV.2 01/02**



**MATWELD, INC.**

**PHONE:(270) 444-0085**

**FAX:(270) 443-6180**

*Matweld reserves the right to change parts, features, or specifications without notice.*

**05100A**  
**WELD SHEARPARTS LIST**  
**REV.2 01/02**

ITEM NO.	PART NO.	DESCRIPTION	QTY.
1	00145	QUICK DISCONNECT COUPLER	1
2	00146	QUICK DISCONNECT NIPPLE	1
3	00905A	VALVE - SPRING CENTER	1
4	00908	SHEAR CYLINDER	2
5	05101	WELD SHEAR FRAME	1
6	05131	VALVE BRACKET	1
7	05103	FRONT HOLD DOWN	2
8	05108	CENTER HOLD DOWN	2
9	05110	SHEAR CENTER PLATE	1
10	05130	FITTING GUARD	1
11	05112	SAFETY SHIELD	1
12	05113	SAFETY SHIELD - LOWER	1
13	05114	HOLD DOWN BRACKET - SHIELD	1
14	05115A	HOSE - CYLINDER EXTENSION	2
15	05116A	HOSE - CYLINDER RETRACT	2
16	A2048	5/16-18 NYLOCK NUT	2
17	2501-04-06	3/8NPT X 1/4 MJIC 90 EL	2
18	A6308	5/16-18 X 1 FLAT HEAD BOLT	2
19	A1001	1/4-20 X 3/4 GR. 5 ZP.	1
20	A2062	1/4-20 NUT INSERT	1
21	A1021	5/16-18 X 3/4 GR. 5 ZP.	2
22	A1083	1/2-13 X 1-1/2 GR. 5 ZP.	4
24	A2000	3/4-16 HEX NUT ZP.	4
25	A1465	3/4-16 JAM NUT	6
26	A2190	1/4 SAE FLAT WASHER ZP	1
27	A2191	5/16 SAE FLAT WASHER ZP	4
28	A2194	1/2 SAE FLAT WASHER ZP	4
29	A2197	3/4 SAE FLAT WASHER ZP	4
30	A6105	1/2 X 1 SPRING PIN	4
31	A6079	3/16 X 1 SPRING PIN	4
32	409-06-06	3/8 FP X 3/8 MP 90 EL	2
33	3/8X2-1/2-80	3/8 X 2-1/2 NIPPLE	2
34	5406-08-06	1/2X 3/8 HEX BUSHING	2
35	2601-04-04-04	1/4 NPT X 1/4 MJIC T	2
36	2501L-04-04	1/4NPT X 1/4 MJIC 90 EL	2
37	5406-06-04	3/8 X 1/4 BUSHING	4
38	5502-04-04	1/4 STREET EL 90	1