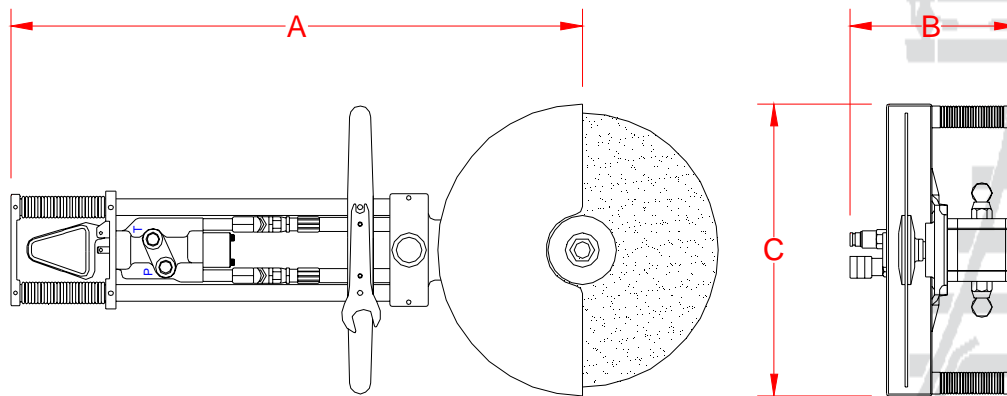


**03900A
 REVERSING RAIL SAW**

The Matweld Reversing Rail Saw is a hydraulic powered abrasive rail saw that can cut rail from either side of the rail safely without disconnecting or realignment; simply pivoting the saw to the other side of the rail provides the flexibility and safety that is needed on track.



FLOW	PRESSURE	RPM	DIMENSIONS	WEIGHT
10 gpm (38 lpm)	2000 psi (140 bar)	3200	A - 36" B - 10" C - 17"	38 lbs (17 kg)
			CLAMP L 36' x W 8" x H 11"	CLAMP 20 lbs (9 kg)

Accessories:

- 00897 - 14" saw blades
- 00899 - 16" saw blades

03900A REVERSING RAIL SAW

GENERAL NOTES:

GENERAL SAFETY PRECAUTIONS:

TOOL OPERATORS AND MAINTENANCE PERSONNEL MUST ALWAYS COMPLY WITH THE SAFETY PRECAUTIONS GIVEN IN THIS MANUAL, AND WITH ALL STICKERS AND TAGS ATTACHED TO THE TOOL AND HOSE. ALL SAFETY PRECAUTIONS ARE GIVEN FOR YOUR SAFETY. READ TO UNDERSTAND AND FOLLOW ALL SAFETY, MAINTENANCE AND OPERATION INSTRUCTIONS BEFORE YOU USE OR MAINTAIN THE TOOL. REVIEW THE MANUAL DAILY BEFORE USING THE TOOL. IN ADDITION, FOLLOW ALL SAFETY GUIDELINES GIVEN YOU BY YOUR SUPERVISOR. DO NOT USE THE TOOL IF YOU HAVE ANY QUESTIONS ABOUT THE OPERATION, SAFETY OR MAINTENANCE OF THIS TOOL. FAILURE TO FOLLOW THESE INSTRUCTIONS CAN RESULT IN PERSONAL INJURY OR EQUIPMENT DAMAGE.

MATWELD HAS NO CONTROL OVER TOOL USE OR OPERATION ONCE IT LEAVES THE MATWELD PLANT. MATWELD HAS NO CONTROL OVER OPERATOR OR MAINTAINER SELECTION. THE CUSTOMER MUST ASSUME RESPONSIBILITY FOR THE TOOL'S SUITABILITY FOR A PARTICULAR FUNCTION. DURING USE OF TOOL, GOOD JUDGEMENT MUST BE USED TO WORK SAFELY AND EFFICIENTLY WITHOUT ENDANGERING THEMSELVES OR BYSTANDERS. UNDERSTANDING OF THE OPERATION AND MAINTENANCE MANUAL IS ESSENTIAL FOR ANYONE USING OR MAINTAINING THE TOOL.

- DO NOT OPERATE THE TOOL UNTIL YOU HAVE BEEN THOROUGHLY AND PROPERLY TRAINED OR UNDER THE SUPERVISION OF AN INSTRUCTOR.
- CHECK POWER SOURCE DAILY TO DETERMINE IF CORRECT FLOW AND PRESSURE ARE AVAILABLE. NEVER EXCEED FLOWS OR PRESSURES FOR THE TOOL BEING USED. PERSONAL INJURY OR DAMAGE TO THE TOOL CAN RESULT.
- OPERATORS MUST CLEAR THE WORK AREA OF NONESSENTIAL PERSONNEL. FLYING DEBRIS CAN CAUSE SERIOUS INJURY.
- THE OPERATOR MUST BE FAMILIAR WITH ALL PROHIBITED WORK AREAS SUCH AS UNSAFE GRADES, POOR FOOTING AREAS AND OVERHEAD HAZARDS.
- MAINTAIN BALANCE AND PROPER FOOTING AT ALL TIMES. NEVER OVERREACH TO THE EXTENT THAT A BROKEN PART OR SUDDEN MOVEMENT OF THE TOOL CAN CAUSE YOU TO LOSE YOUR BALANCE AND FALL, OR CAUSE INJURY TO YOUR SELF OR SOMEONE ELSE.

- WHEN WORKING NEAR ELECTRICAL CONDUCTORS, ALWAYS ASSUME THAT THE CONDUCTORS ARE ENERGIZED AND THAT HOSES AND CLOTHING CAN CONDUCT HARMFUL ELECTRICITY. USE HOSES LABELED AND CERTIFIED AS NONCONDUCTIVE.
- DO NOT OPERATE THE TOOL AT EXCESSIVE FLUID TEMPERATURES OPERATOR DISCOMFORT AND POTENTIAL BURNS CAN RESULT AT HIGH OIL TEMPERATURES.
- NEVER WEAR LOOSE CLOTHING THAT CAN GET ENTANGLED IN THE WORKING PARTS OF THE TOOLS OR BE CARELESS WITH HANDS, FEET OR OTHER BODY PARTS AROUND THE WORKING PARTS OF THE TOOLS. HYDRAULIC TOOLS EXERT HIGH TORQUE AND FORCE AND CAN CAUSE SERIOUS INJURY OR DEATH IF IMPROPERLY USED.
- TO AVOID PERSONAL INJURY OR EQUIPMENT DAMAGE, ALL TOOL REPAIR, MAINTENANCE OR SERVICE MUST ONLY BE PERFORMED BY AUTHORIZED AND PROPERLY TRAINED PERSONNEL.
- ALWAYS WEAR SAFETY EQUIPMENT SUCH AS OIL INJECTION RESISTANT WORK GLOVES, SAFETY GLASSES, SAFETY BOOTS, EAR PROTECTION AND OTHER SAFETY APPAREL DICTATED BY YOUR SUPERVISOR APPLICABLE FOR THE JOB YOU ARE DOING AND THE TOOL YOU ARE USING.
- DO NOT CLEAN INSPECT OR REPAIR THE TOOL WHILE CONNECTED TO THE POWER SOURCE. ACCIDENTAL ENGAGEMENT OF THE TOOL CAN CAUSE SERIOUS PERSONAL INJURY.
- OIL INJECTION HAZARD EXISTS WITH THIS TOOL. OIL INJECTION IS A CONDITION WHERE HYDRAULIC OIL IS INJECTED UNDER THE SKIN FROM PRESSURE IN THE LINE. ALWAYS WEAR GLOVES AND REPAIR ANY LEAKS IMMEDIATELY. NEVER CARRY A TOOL BY THE HOSES.
- DO NOT USE DAMAGED EQUIPMENT. IMMEDIATELY REPLACE ANY DAMAGED HOSES, FITTINGS, OR OTHER COMPONENTS SHOWING WIRE BRAID, NICKS, CUTS, DAMAGE OR ABRASIONS. FAILURE TO DO SO MAY RESULT IN EQUIPMENT DAMAGE AND / OR PERSONAL INJURY OR DEATH.
- CLEAN UP ANY OIL OR FLUID SPILLS IMMEDIATELY.

HAVE SUPERVISOR ADD ADDITIONAL PRECAUTIONS RELATING TO THE SPECIFIC WORK AREA AND LOCAL SAFETY REGULATIONS BELOW:

- *
- *
- *
- *
- *
- *
- *
- *
- *
- *
- *
- *
- *
- *
- *
- *
- *
- *
- *
- *
- *
- *
- *
- *

SAFETY PRECAUTIONS:

1. ALWAYS WEAR PROTECTIVE EQUIPMENT SUCH AS GLOVES, SAFETY GLASSES, EAR PROTECTION AND SAFETY SHOES.
2. DO NOT WEAR CLOTHING WHICH MAY BECOME ENTANGLED IN THE TOOL.
3. ALWAYS KEEP WORK AREA FREE OF TOOLS OR ANY OTHER OBJECTS WHICH MAY IMPAIR SOUND FOOTING.
4. CAUTION OIL INJECTION HAZARD EXISTS WITH THIS TOOL. OIL INJECTION IS A CONDITION WHERE THE HYDRAULIC OIL IS FORCED UNDER THE SKIN THROUGH PRESSURE IN THE LINE. ALWAYS WEAR GLOVES, DO NOT CARRY THE TOOL BY HYDRAULIC HOSES, AND REPAIR LEAKS IMMEDIATELY.
5. NEVER USE THE RAIL SAW AS A FREE HAND TOOL.
6. NEVER CHANGE BLADES WITH THE POWER SOURCE VALVE(S) IN THE "ON" POSITION, TURN THE POWER SOURCE "OFF".
7. NEVER CARRY THE RAIL SAW WITH THE POWER SOURCE IN THE "ON" POSITION, TURN THE POWER SOURCE "OFF".
8. NEVER TOUCH OR TRY TO STOP A MOVING BLADE.
9. ALWAYS CHECK THE WORK AREA FOR ANY TRASH WHICH MAY IGNITE FROM SPARKS.
10. ALWAYS CHECK THE AREA FOR SMOLDERING TIES OR TRASH BEFORE LEAVING THE SITE.
11. ALWAYS KEEP A FIRM GRASP ON THE SAW, WITH BOTH HANDS, AT ALL TIMES.
12. WHEN CHANGING BLADES, FOLLOW ALL BLADE MANUFACTURERS INSTRUCTIONS FOR SAFETY AND OPERATION. USE ONLY BLADES THAT COMPLY WITH ANSI STANDARDS. BEFORE USING, RUN NEW SAW BLADE FOR ONE MINUTE AT FULL SPEED TO CHECK FOR DEFECTS OR VIBRATION.
13. NEVER LET THE SAW BLADE CUT INTO ANY MATERIAL (TIE, BALLAST, ETC...) OTHER THAN THE RAIL BEING CUT.

03900A REVERSING RAIL SAW

14. MOST HYDRAULIC OILS HAVE A FLASH POINT OF APPROXIMATELY 450 DEGREES (F). MAKE SURE HOSES ARE COMPLETELY CLEAR OF SPARKS AND HOT DEBRIS. HAVE ANOTHER PERSON STAND CLOSE TO HYDRAULIC POWER SOURCE CONTROLS TO OBSERVE OPERATION AND FOR EMERGENCY SHUTDOWN IF NECESSARY

15. IF THE BLADE STOPS DURING THE CUTTING PROCESS DUE TO RAIL BIND OR OTHER PROBLEM, IMMEDIATELY TURN OFF THE POWER SOURCE AND DISCONNECT THE HOSES BEFORE ATTEMPTING TO FREE THE BLADE. AFTER FREEING THE BLADE REPLACE IT WITH A NEW BLADE BEFORE CONTINUING THE CUT.

03900A REVERSING RAIL SAW

FLOW: 10 GPM (38 LPM)
PRESSURE: 2000 PSI (140 BAR)
BACK PRESSURE: MAX 250 PSI
RPM: 3200

OPERATION:

1. POSITION SAW CLAMP SQUARELY ON RAIL AND TIGHTEN.
2. **ATTACH** THE RAIL SAW TO THE CLAMP ASSEMBLY AND TIGHTEN.
3. WITH THE POWER SOURCE IN THE “OFF” POSITION, CONNECT THE HOSES. DO NOT DRAG THE SERVICE HOSE BY PULLING WITH THE TOOL. LOOP THE SERVICE HOSE IN THE WORK AREA IN SUCH A WAY TO RELIEVE STRESS ON THE HOSE AND QUICK DISCONNECT FITTINGS WHILE WORKING. BE AWARE OF HOSE LOCATION AT ALL TIMES. KEEP HOSES CLEAR OF SPARKS.
4. TURN POWER SOURCE TO THE “**ON**” POSITION TO SUPPLY 10 GPM TO TOOL.
5. GRASP THE SAW FIRMLY AND PULL UP ON THE TRIGGER TO START THE SAW BLADE ROTATING. BEFORE USING, RUN SAW BLADE FOR ONE MINUTE AT FULL SPEED TO CHECK FOR DEFECTS OR VIBRATION BEFORE TOUCHING RAIL. THE SAW IS DESIGNED TO THROW SPARKS AWAY FROM THE OPERATOR.
6. KEEP THE SAW OSCILLATING WHILE MAKING THE CUT. THIS WILL REDUCE **GLAZING** AND CUTTING TIME.
7. THE OPERATOR CAN START FROM EITHER SIDE OF THE RAIL OR ROTATE TO THE OPPOSITE SIDE OF THE RAIL TO COMPLETE THE CUT. TO ROTATE THE SAW, RELEASE THE TRIGGER TO STOP THE SAW AND WITHOUT MOVING THE CLAMP SIMPLY PIVOT THE SAW OVER AND MOVE TO THE OPPOSITE SIDE OF THE RAIL. YOUR SAWING POSITION WILL CHANGE BUT IT IS DESIGNED SO THAT YOU WILL STILL BE **PULLING UP** ON THE TRIGGER TO RESUME CUTTING. KEEP CLEAR OF THE TRIGGER AND BLADE WHILE CHANGING POSITIONS. **ENSURE** HOSE IS ROUTED AWAY FROM SPARKS.
8. AFTER FINISHING THE CUT, TURN THE POWER SOURCE “**OFF**” AND DISCONNECT HOSES BEFORE ATTEMPTING TO REMOVE THE SAW.

03900A REVERSING RAIL SAW

MAINTENANCE:

1. CHECK TOOL **DAILY** FOR PROPER OPERATION, LEAKS, OR DAMAGE.
2. INSPECT HOSES **DAILY**. REPLACE CUT, BURNED, OR OTHERWISE DAMAGED HOSES.
3. KEEP QUICK DISCONNECT COUPLERS **CLEAN AND LUBRICATED**.
4. USE HYDRAULIC FLUIDS THAT COMPLY WITH HTMA SPECIFICATION 5.7, THE HYDRAULIC FLUID SHOULD HAVE A VISCOSITY BETWEEN 100 AND 400 SSU (20-82 CENTISTOKES) AT THE MAXIMUM AND MINIMUM EXPECTED OPERATING TEMPERATURES. PETROLEUM BASED HYDRAULIC FLUIDS WITH ANTI-WEAR PROPERTIES AND A VISCOSITY INDEX OF OVER 140 WORK FOR A WIDE RANGE OF OPERATING CONDITIONS.

THE FOLLOWING OILS MEET HTMA SPECIFICATION 5.7:

AMOCO RYKON MV	CITGO A/W ALL TEMP
SUNVIS 706	MOBIL D.T.E. 13
CHEVRON EP-MV	TEXACO "RANDO" HDAZ

OTHER FLUIDS THAT MEET OR EXCEED THIS SPECIFICATION CAN BE USED.

*SEE **COLD WEATHER OPERATION** HYDRAULIC OIL NOTE.

5. HAVE TOOL INSPECTED, AT LEAST ANNUALLY, BY MATWELD OR A MATWELD QUALIFIED SERVICE REPRESENTATIVE TO DETERMINE IF TOOL IS IN NEED OF SAFETY CHANGES OR WORN PART REPLACEMENT.
6. CONTACT MATWELD ON A PERIODIC BASIS, AT LEAST ANNUALLY, FOR SERVICE BULLETINS, SAFETY NOTICES, OR OTHER IMPORTANT INFORMATION PERTAINING TO THIS TOOL.
7. APPLY GREASE TO DISCONNECT BOLT THREADS **WEEKLY**.

CHANGING BLADES:

1. TURN POWER SOURCE "**OFF**" AND **DISCONNECT** HOSES FROM TOOL.
2. WITH THE POWER SOURCE OFF, HOSES DISCONNECTED, SAW BLADE ELEVATED ABOVE THE GROUND OR ON A CLEAN WORK AREA, REMOVE THE 3/4" JAM NUT, NYLON WASHER AND THE OUTSIDE FLANGE. BE CAREFUL NOT TO MISPLACE THE NYLON WASHER. THIS WASHER **MUST** BE ON FOR SAFE OPERATION. INSTALL NEW BLADE, OUTER FLANGE, NYLON WASHER AND TIGHTEN JAM NUT.

03900A REVERSING RAIL SAW

REPAIR TROUBLESHOOTING:

1. SAW DOESN'T CUT RAIL FAST ENOUGH:

- CHECK FLOW UNDER LOAD. POWER SOURCE MUST MAINTAIN 10 GPM UNDER NORMAL LOAD. INSTALL FLOW METER AND RESTRICT TO APPROXIMATELY 1500 PSI. FLOW SHOULD BE 10 GPM AT 1500 PSI WORKING PRESSURE.
- DETERMINE THAT OPERATOR IS USING SAW PROPERLY. THE SAW SHOULD BE OSCILLATED BACK AND FORTH WHILE CUTTING. THE AVERAGE CUTTING TIME IS 1 - 2 MINUTES FOR 132 LB RAIL.
- THE PROPER RPM OF THE MATWELD SAW IS 3200 (± 100) RPM AT 10 GPM.
- THE SAW RPM IS PROPORTIONAL TO THE FLOW PROVIDED. IF THE FLOW DROPS TO 8 GPM THE RPM OF THE SAW WILL BE 2400 RPM, MUCH TOO SLOW FOR CUTTING RAIL. IF THE FLOW IS INCREASED TO 18 GPM THE SAW RPM WILL BE 5500 RPM. PROPER FLOW IS CRITICAL FOR PROPER OPERATION AND SAFETY OF THE OPERATOR. DETERMINE IF THE POWER SOURCE IS DELIVERING THE PROPER FLOW AND RELIEF PRESSURE TO THE SAW AND ALL OTHER SPEED RELATED TOOLS BY CHECKING FLOW WITH A FLOW GAUGE. (MATWELD PART NUMBER 03600 – FLOW AND PRESSURE GAUGE, OR EQUIVALENT).

2. THE SAW CUTS CROOKED:

- PLAY IN ANY OF THE CONNECTIONS ON CLAMP ARM.
- BAD, GLAZED, OR DEFECTIVE BLADES.
- LOW FLOW REDUCING SAW RPM.
- LOOSE ARBOR ON SAW MOTOR.
- LOOSE BLADE FLANGES.
- BENT SAW FRAME BETWEEN MOTOR AND PIVOT POINT.
- UNTRAINED OPERATOR

REVIEW OF HYDRAULIC PRINCIPLES:

TOOL CIRCUIT

1. HYDRAULIC FORMULAS:

$$\text{GPM} = \frac{\text{CID X RPM}}{231} \qquad \text{HP} = \frac{\text{GPM X PSI}}{1714 (.85)} \\ 1456.9$$

Example: HP required to deliver 10 GPM at 1500 PSI.

$$\frac{10 \text{ GPM X } 1500 \text{ PSI}}{1456.9} = \frac{15000}{1456.9} = 10.3 \text{ HP}$$

(subtract back pressure for tool HP)

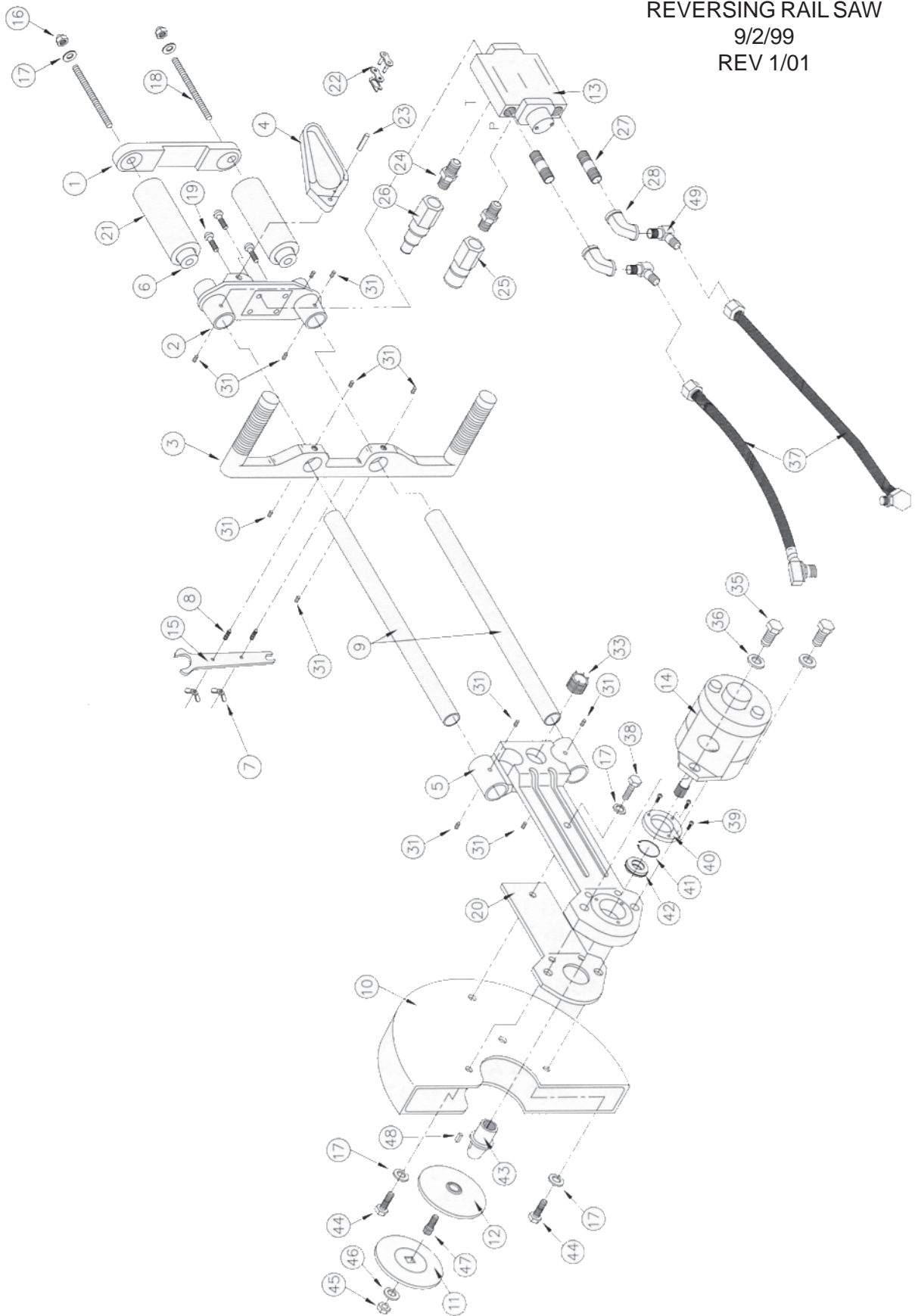
Estimated HP delivered by pump or used by tool.

GPM	PSI	500	1,000	1,500	2,000	2,500	3,000
3		1.03	2.06	3.09	4.12	5.15	6.18
5		1.72	3.43	5.15	6.86	8.58	10.30
10		3.43	6.86	10.3	13.70	17.20	20.60
15		5.15	10.30	15.40	20.60	25.70	30.90

2. BACK PRESSURE:

BACK PRESSURE MEASURED AT THE TOOL RETURN PORT MUST NOT EXCEED THE MANUFACTURERS BACK PRESSURE RATING. MOST MANUFACTURERS LIST THE MAXIMUM BACK PRESSURE FOR THEIR HYDRAULIC TOOLS AT 250 PSI. BACK PRESSURE MEASURED ON THE RETURN SIDE OF THE TOOL IS THE FORCE REQUIRED TO GET THE OIL BACK TO THE TANK. IN ALMOST ALL CASES THE LOWER THE BACK PRESSURE THE BETTER THE TOOL PERFORMANCE. FIRST, THE BACK PRESSURE IS SUBTRACTED FROM THE MAXIMUM TOOL PRESSURE TO ARRIVE AT A MAXIMUM TOOL OPERATING PRESSURE. FOR EXAMPLE, TOOLS WITH 2000 PSI OPERATING PRESSURE ARE INSTALLED ON A SYSTEM WITH 250 PSI BACK PRESSURE. THIS LEAVES 1750 PSI AS A MAXIMUM TOOL PRESSURE. IMAGINE A SYSTEM WITH 500 PSI BACK PRESSURE. 2000 MINUS 500 PSI BACK PRESSURE LEAVES ONLY 1500 PSI FOR THE TOOL. SECOND, TOOLS ARE DESIGNED FOR PRESSURE TO BUILD ON THE PRESSURE SIDE OF THE TOOL. IF TOO MUCH PRESSURE BUILDS ON THE RETURN SIDE, NOT ONLY IS PERFORMANCE EFFECTED, BUT SEALS MAY BLOW. THIS IS WHY IT IS VERY IMPORTANT TO DIRECT THE FLOW INTO THE TOOL CORRECTLY. REVERSING THE HOSES TO TEST MAY RESULT IN BLOWN SEALS, DAMAGE TO THE TOOL, AND PERSONAL INJURY.

03900A
REVERSING RAIL SAW
9/2/99
REV 1/01



MATWELD, INC.

PHONE:(270) 444-0085

FAX:(270) 443-6180

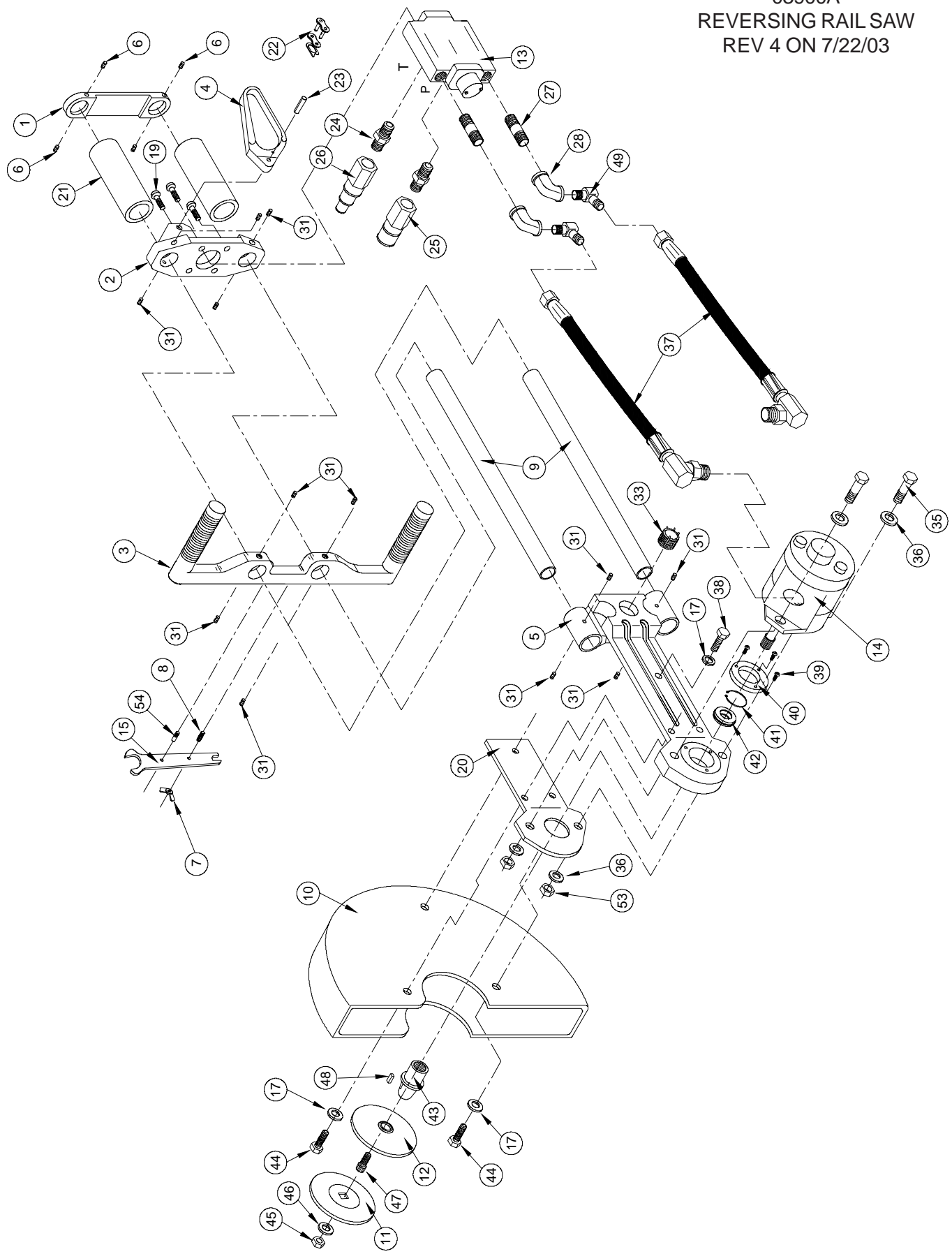
Matweld reserves the right to change parts, features, or specifications without notice.

03900A
 REVERSING RAIL SAW PARTS LIST
 REV. 3
 1/01

NOTE: WHEN ORDERING SAW PARTS VERIFY WHICH REAR HANDLE ASSEMBLY IS USED.

ITEM	PART NO.	DESCRIPTION	QTY.
1	03901A	HANDLE END CAP	1
2	03905A	HANDLE BASE	1
3	03903A-01	HANDLE ARM	1
4	03902A	TRIGGER LEVER	1
5	03904A	FRAME	1
6	03909A	REAR HANDLE	2
7	A2499	1/4-20 WING NUT	1
8	A5608	1/4-20 x 1 SET SCREW	1
9	03929A	FRAME TUBE	2
10	03906A	SAW GUARD	1
11	03908A	OUTER FLANGE	1
12	03907A	INNER FLANGE	1
13	03913A	SAW VALVE	1
14	03912A	SAW MOTOR	1
15	03975A	SPANNER WRENCH	1
16	A1480	5/16-18 ACORN NUT	2
17	A2191	5/16 FLAT WASHER	5
18	03916A	5/16-18 x 6 3/8 ALL THREAD ROD	2
19	A6356	5/16-18 x 1 BHCS	4
20	03950A	SAW GUARD SPACER	1
21	01659	REAR HANDLE GRIP	2
22	01657	CHAIN LINK	1
23	A6078	3/16 x 3/4 ROLL PIN	1
24	249-08-08	#8 x 1/2 MP NIPPLE	2
25	00145	Q.D. COUPLER	1
26	00146	Q.D. NIPPLE	1
27	3/8X21/2-80	3/8 x 2-1/2" NIPPLE (SCH. 80)	2
28	5505-06-06	3/8 NPT x 3/8 NPT 45 ELBOW	2
31	A5625	5/16-24 x 1/4 SET SCREW	12
33	RKK-3/4-10	3/4-10 KEENSERT	1
35	A1046	3/8-16 x 2 HEX HEAD BOLT	2
36	A2192	3/8 FLAT WASHER	4
37	03931A	PRESSURE/RETURN HOSE	2
38	A1023	5/16-18 x 1 1/4 HEX HEAD BOLT	1
39	A6325	10-24 x 1/2 BHCS	3
40	03935A	BEARING RETAINING RING	1
41	03936A	RETAINING RING	1
42	03933A	BEARING	1
43	03934A	SPLINE ADAPTOR	1
44	A1021	5/16-18 x 1 HEX HEAD BOLT	2
45	A1465	3/4-16 JAM NUT	1
46	02201	3/4 NYLON WASHER	1
47	A5450	5/16-24 x 1 SHCS	1
48	03932A	SPLINE ADAPTOR KEY	1
49	355-08-06	3/8 NPT x 3/8 JIC 45 ELBOW	2
51*	01631	INTERNAL SEAL KIT	1
52*	01612	SHAFT SEAL KIT	1

03900A
REVERSING RAIL SAW
REV 4 ON 7/22/03



MATWELD, INC.

PHONE:(270) 444-0085

FAX:(270) 443-6180

Matweld reserves the right to change parts, features, or specifications without notice.

03900A
REVERSING RAIL SAW
03900A PARTS LIST

NOTE: WHEN ORDERING SAW PARTS VERIFY WHICH REAR HANDLE ASSEMBLY IS USED.

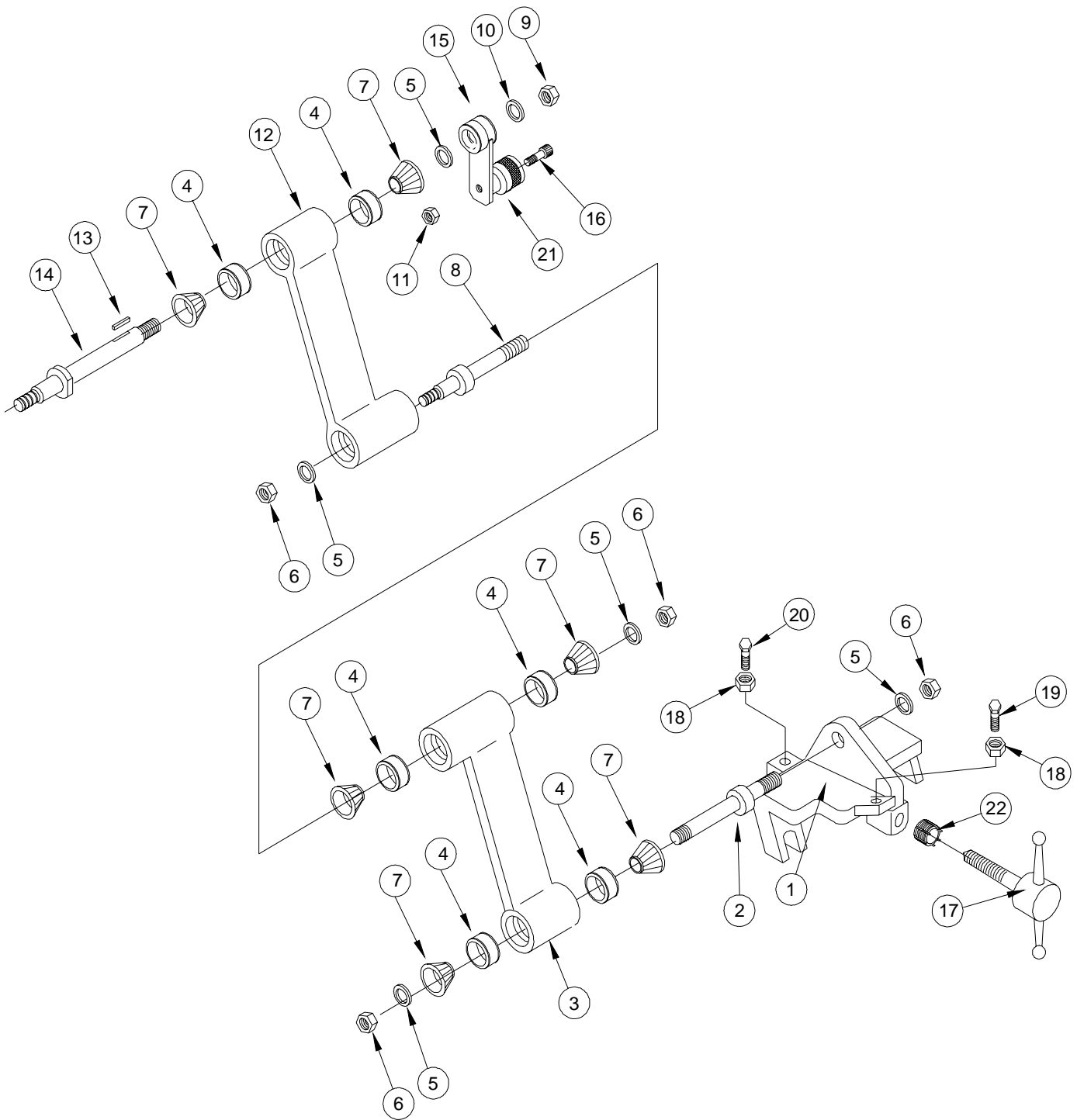
ITEM	PART NO.	DESCRIPTION	QTY.
1	03901SL	HANDLE END CAP	1
2	03905SL	HANDLE BASE	1
3	03903A-01	HANDLE ARM	1
4	03982	TRIGGER LEVER	1
5	03904A	FRAME	1
6	A5600	1/4-20 x 1/4 SET SCREW	4
7	A2499	1/4-20 WING NUT	1
8	A5608	1/4-20 x 7/8 SET SCREW	1
9	03928SL	FRAME TUBE	2
10	03906A	SAW GUARD	1
11	03908A	OUTER FLANGE	1
12	03907A	INNER FLANGE	1
13	03913A	SAW VALVE	1
14	03912A	SAW MOTOR	1
15	03975A	SPANNER WRENCH	1
17	A2191	5/16 FLAT WASHER	3
19	A6356	5/16-18 x 1 BHCS	4
20	03950A	SAW GUARD SPACER	1
21	00106	REAR HANDLE GRIP	2
22	01657	CHAIN LINK	1
23	A6078	3/16 x 3/4 ROLL PIN	1
24	249-08-08	#8 x 1/2 MP NIPPLE	2
25	00145	Q.D. COUPLER	1
26	00146	Q.D. NIPPLE	1
27	3/8 x 2 1/2-80	3/8 x 2-1/2" NIPPLE (SCH. 80)	2
28	5505-06-06	3/8 NPT x 3/8 NPT 45 ELBOW	2
31	A5625	5/16-24 x 1/4 SET SCREW	12
33	RKK-3/4-10	3/4-10 KEENSERT	1
35	A1046	3/8-16 x 2 HEX HEAD BOLT	2
36	A2192	3/8 FLAT WASHER	4
37	03931A	PRESSURE/RETURN HOSE	2
38	A1024	5/16-18 x 1 1/2 HEX HEAD BOLT	1
39	A6325	10-24 x 1/2 BHCS	3
40	03935A	BEARING RETAINING RING	1
41	03936A	RETAINING RING	1
42	03933A	BEARING	1
43	03934A	SPLINE ADAPTOR	1
44	A1022	5/16-18 x 1 HEX HEAD BOLT	2
45	A1465	3/4-16 JAM NUT	1
46	02201	3/4 NYLON WASHER	1
47	A5450	5/16-24 x 1 SHCS	1
48	03932A	SPLINE ADAPTOR KEY	1
49	355-08-06	3/8 NPT x 3/8 JIC 45 ELBOW	2
51*	01631	INTERNAL SEAL KIT	1
52*	01612	SHAFT SEAL KIT	1
53	A2050	3/8-16 NYLOCK NUT	2
54	A6200	1/4 DETENT PIN	1

MATWELD, INC.

PHONE:(270) 444-0085

FAX:(270) 443-6180

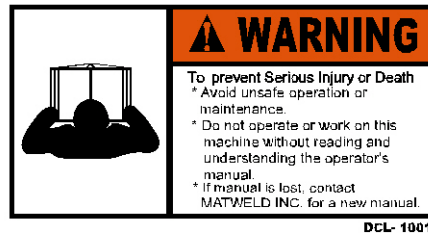
Matweld reserves the right to change parts, features, or specifications without notice.



03940A
CLAMP ASSEMBLY

ITEM	PART NO.	DESCRIPTION	QTY.
1	03955A	CLAMP BASE	1
2	03917A	BASE MOUNTING STUD	1
3	03918A	BASE ARM	1
4	03949A	SAW ARM RACE	6
5	A2200	3/4 14 GA. WASHER	5
6	A2061	3/4-16 NYLOCK NUT	4
7	03948A	BEARING	6
8	03920A	LINKING STUD	1
9	A2054	1/2-13 NYLOCK NUT	1
10	A2194	1/2 SAE FLAT WASHER	1
11	A1454	3/8-16 HEX JAM NUT	1
12	03922A	MOUNTING ARM	1
13	00806-01	3/16 SQ. KEY	1
14	03923A	DISCONNECT BOLT	1
15	03926A	CLAMP HANDLE	1
16	A1481	1/2 x 1 SHOULDER BOLT	1
17	00832	CLAMP SCREW	1
18	A1458	1/2-13 HEX JAM NUT	2
19	A1085	1/2-13 x 2 HEX HEAD BOLT	1
20	A1087	1/2-13 x 2 1/2 HEX HEAD BOLT	1
21	A3930A	CRANK HANDLE KNOB	1
22	RKK 5/8-11	5/8-11 KEEN SERT	1

DECAL LEGEND:



LIMITED WARRANTY

MATWELD, INC., PADUCAH, KY., WARRANTS TO THE ORIGINAL PURCHASE OF THIS PRODUCT THAT THE PRODUCT WILL BE FREE FROM DEFECTS IN MATERIAL AND WORKMANSHIP FOR THE PERIOD OF ONE (1) YEAR AFTER THE DELIVERY OF SUCH PRODUCT TO THE CUSTOMER. OTHER EQUIPMENT AND PARTS USED, BUT NOT MANUFACTURED BY MATWELD INC. ARE COVERED DIRECTLY BY THE WARRANTY OF THE MANUFACTURER OF THOSE PRODUCTS. PROOF OF PURCHASE MUST BE DOCUMENTED INCLUDING REFERENCE TO A SERIAL NUMBER LOCATED ON EACH TOOL. THE PURCHASER'S ONLY REMEDIES UNDER THIS LIMITED WARRANTY SHALL BE LIMITED AT MATWELD'S SOLE OPTION TO THE FOLLOWING: REPAIR, REPLACEMENT OR REFUND OF THE PURCHASE PRICE OF THE DEFECTIVE PRODUCTS. EACH OF THESE REMEDIES REQUIRES TIMELY NOTIFICATION OF THE DEFECT IN THE PRODUCT AND SUBSTANTIATION THAT THE PRODUCT HAS BEEN PROPERLY STORED, MAINTAINED AND USED. MATWELD'S OBLIGATIONS HEREUNDER EXTEND ONLY TO THE PURCHASER OF THE PRODUCT AND NOT TO ANY THIRD PARTY.

AS A CONDITION PRECEDENT TO MATWELD'S OBLIGATION HEREUNDER, THE DEFECTIVE PRODUCT MUST NOT HAVE BEEN ALTERED OR MODIFIED WITHOUT THE EXPRESS WRITTEN APPROVAL OF MATWELD, INC. THE PRODUCT MUST NOT HAVE BEEN SUBJECTED TO DELIBERATE DAMAGE, SHIPPING DAMAGE, NEGLIGENCE, TAMPERING BY UNAUTHORIZED PERSONNEL OR DAMAGE BY IMPROPER USE, STORAGE OR MAINTENANCE. SERIAL NUMBERS MUST NOT HAVE BEEN ALTERED, DEFACED OR REMOVED. SUCH ACTION VOIDS LIMITED WARRANTY.

EXCLUSIONS TO LIMITED WARRANTY

THIS LIMITED WARRANTY IS EXCLUSIVE AND IS IN LIEU OF ANY OTHER WARRANTY, WRITTEN OR ORAL, EXPRESSED OR IMPLIED, INCLUDING, WITHOUT LIMITATION, ANY IMPLIED WARRANTY OR MERCHANTABILITY OR FITNESS FOR A PARTICULAR PURPOSE.

LIMITED WARRANTY DOES NOT COVER NORMAL WEAR AND TEAR ITEMS SUCH AS FILTERS, HOSES, COUPLERS, BITS, SOCKETS, AUGERS, AND BATTERIES.

LIMITATION OF LIABILITY

EXCEPT AS PROVIDED ABOVE, MATWELD SHALL IN NO EVENT BE LIABLE OR RESPONSIBLE FOR ANY INJURY, LOSS OR DAMAGE, DIRECT, INCIDENTAL OR CONSEQUENTIAL, ARISING OUT OF THE USE OR MISUSE OR INABILITY TO USE THE PRODUCT, HOWEVER CAUSED AND ON ANY THEORY OF LIABILITY INCLUDING, WITHOUT LIMITATIONS, BREACH OF CONTRACT, TORT, (INCLUDING NEGLIGENCE OR STREET LIABILITY) AND NOT WITHSTANDING ANY FAILURE OF ANY REMEDY HERIN OF ITS ESSENTIAL PURPOSE, EVEN IF MATWELD WAS AWARE OF THIS POSSIBILITY OF SUCH DAMAGE. MATWELD'S LIMITED WARRANTY AS SET FORTH ABOVE SHALL NOT BE ENLARGED, DIMINISHED OR AFFECTED BY, AND NO OBLIGATION OR LIABILITY SHALL ARISE OR GO OUT OF THE RENDERING OF TECHNICAL ADVICE OR SERVICE BY MATWELD OR ITS AGENTS. THE FOREGOING MAY NOT BE CHANGED EXCEPT BY WRITTEN AGREEMENT SIGNED BY AN AUTHORIZED OFFICER OF MATWELD, THE REMEDIES SET FORTH HERIN ARE EXCLUSIVE.

MATWELD, INC.

PHONE:(270) 444-0085

FAX:(270) 443-6180

Matweld reserves the right to change parts, features, or specifications without notice.

CUSTOMER INFORMATION:

Name _____

Company _____

Serial # of your Matweld tool _____

(Upon receiving your Matweld tool, make sure to list serial number above so that a good record is kept for order information.)

MATWELD HYDRAULIC TOOL LIST

All Matweld Hydraulic Tools operate at 5 or 10 GPM @ 2000 PSI

POWER UNITS:

00100K – GASOLINE POWERED (1) 10 GPM OR (2) 5 GPM CIRCUITS

02900A – DIESEL (1) 10 GPM OR (2) 5 GPM CIRCUITS

(OPTIONAL CATALYTIC EXHAUST AND/OR MSHA CERTIFIED)

05500 – TWIN POWER DUAL CIRCUIT (1) 10 GPM OR (2) 5 GPM CIRCUITS & 5000 WATT GENERATOR

02050K – GASOLINE POWERED (1) 5 GPM

03700A – ELECTRIC POWER (1) 10 GPM OR (2) 5 GPM CIRCUITS

GRINDERS:

09200A – PRECISION FROG GRINDER

06000 – PROFILE GRINDER

06900 & 06900A – MULTI-PURPOSE GRINDER (TRIGGER VERSION AVAILABLE)

05900 – FROG/PROFILE GRINDER (TRIGGER VERSION AVAILABLE)

00700 – RAIL SURFACING GUIDE

04600 – STRAIGHT STONE CW ROTATION (TRIGGER VERSION AVAILABLE)

04700 – STRAIGHT STONE CCW ROTATION (TRIGGER VERSION AVAILABLE)

07500 – CHAMFER TOOL

04800 – CUP STONE GRINDER (TRIGGER VERSION AVAILABLE)

00600C – CUP STONE GRINDER

05400 – ANGLE GRINDER

05600 – BULL NOSE GRINDER

02400 – 10" OR 14" FROG AND SWITCH GRINDER

TRACK TOOLS:

03900A – REVERSING RAIL SAW

05100A & 05100B – POWER WELD SHEAR

03500 – SELF FEED RAIL DRILL

01600A – 5 GPM 1" IMPACT WRENCH

04500D – 1/2" HYDRAULIC DRILL IMPACT WRENCH

08200 – TAMPER

02800 – 60 TON BRIDGE SPREADER

01200 – SPRING ANCHOR APPLICATOR

01100A – SPIKE PULLER (SINGLE, 2 STAGE & TRIGGER VERSIONS AVAILABLE)

00800A – 16" RAIL SAW

05000 – HAND PUMP WELD SHEAR

01500 – RAIL DRILL

02500 – 10 GPM 1" IMPACT WRENCH

03100C – RAIL PULLER

08300 – SPIKE DRIVER

07650 – HYDRAULIC CLIP TOOL

OTHER PRODUCTS:

HYDRAULIC MANIFOLDS

HYDRAULIC TEST GAUGES

HOSE REELS

HYDRAULIC HOSES

ACCESSORIES

MATWELD, INC.

PHONE:(270) 444-0085

FAX:(270) 443-6180

Matweld reserves the right to change parts, features, or specifications without notice.