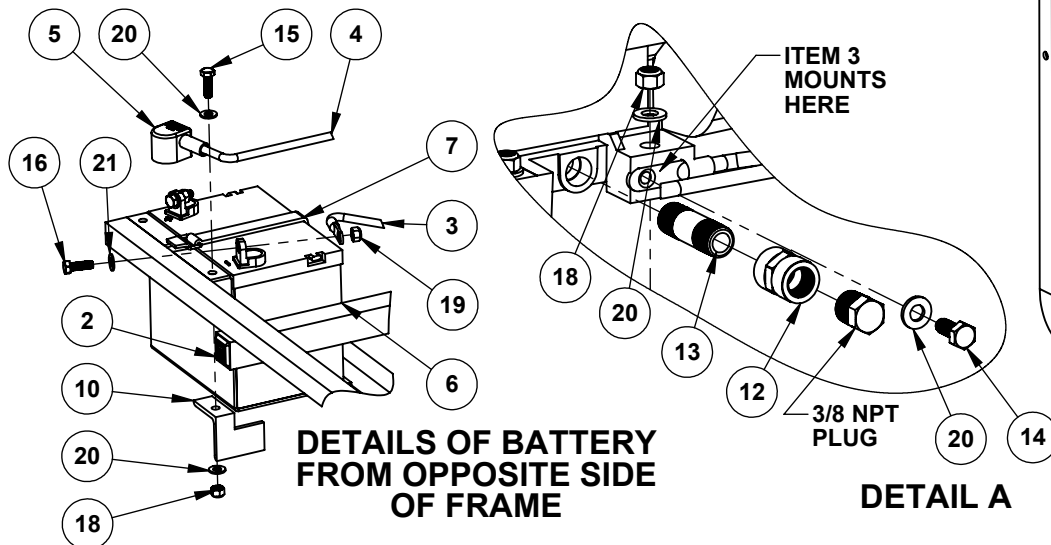
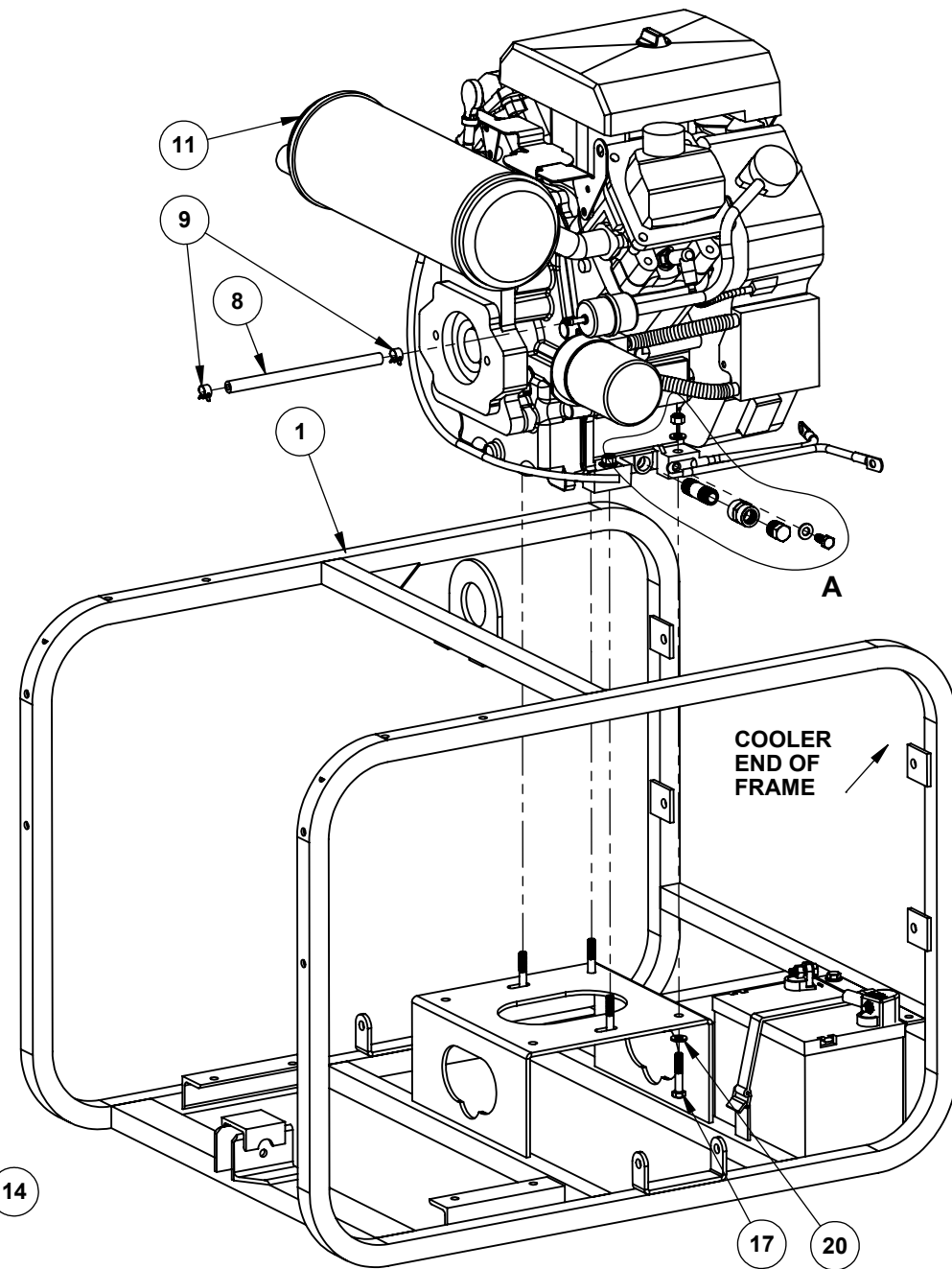


ITEM NO.	PART NUMBER	DESCRIPTION	QTY
1	00104	POWER UNIT FRAME	1
2	00114	PLASTIC SQUARE PLUG	1
3	00120	NEGATIVE BATTERY CABLE	1
4	00121-02	POSITIVE BATTERY CABLE	1
5	00121-02-1	POSITIVE BATTERY COVER	1
6	00122	BATTERY	1
7	00123	BATTERY STRAP	1
8	00130	FUEL HOSE	1
9	00131	FUEL HOSE CLAMP	2
10	00172	BATTERY RETAINER CLIP	1
11	05501	GASOLINE ENGINE	1
12	309-06	3/8 NPT HEX COUPLER	1
13	3/8 X 2 -80	3/8 NPT x 2 SCH. 80 NIPPLE	1
14	A1021	5/16-18 x 3/4 HEX HEAD BOLT	1
15	A1022	5/16-18 x 1 HEX HEAD BOLT	1
16	A1022B	5/16-18 x 1 BRASS HEX HEAD BOLT	2
17	A1025	5/16-18 x 1 3/4 HEX HEAD BOLT	4
18	A2048	5/16-18 NYLOCK NUT	5
19	A2048B	5/16-18 BRASS NYLOCK NUT	2
20	A2191	5/16 SAE FLAT WASHER	11
21	A2191B	5/16 BRASS FLAT WASHER	2



THIS SHEET SHOWS ENGINE AND FRAME

ISSUE NO.	REVISIONS		DATE	GENERAL NOTES	APPROVED BY		DATE
	REVISION				ENG.	GLP	
1	UPDATED TO SOLIDWORKS FORMAT		11/18/10	DEBURR AND BREAK ALL SHARP EDGES CHAMFER ALL HOLES ALL ANGLES @ 90° UNLESS NOTED OTHERWISE TOLERANCES UNLESS OTHERWISE SPECIFIED 3 PLACE DECIMAL ± .010 2 PLACE DECIMAL ± .020 ANGLES ARE ± 0.5°			11/18/10

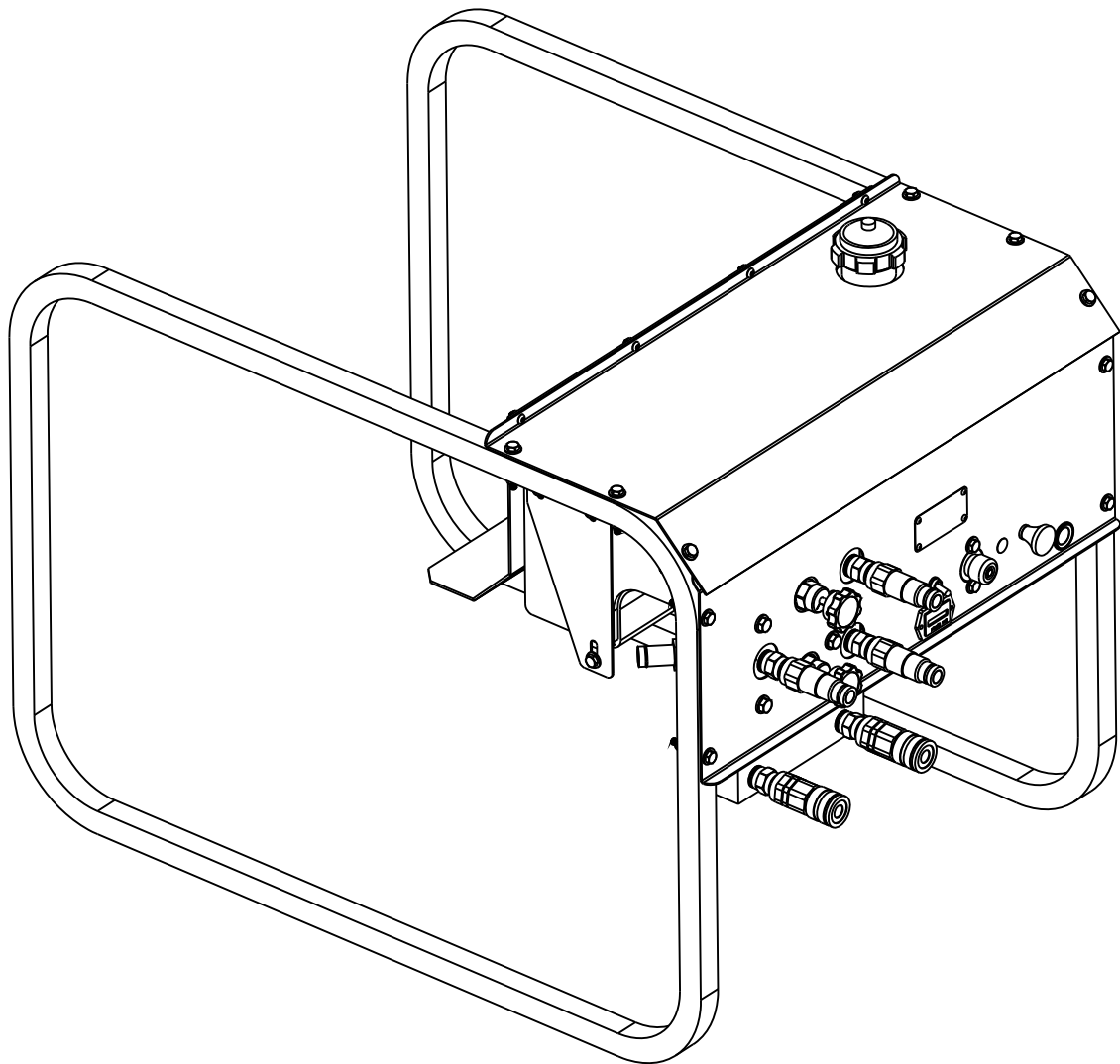
Matweld, Inc.

PH: (270) 444-0085 FAX: (270) 443-6180
 WEBSITE: www.matweld.com
 EMAIL: customerservice@matweld.com

THE INFORMATION CONTAINED IN THIS DRAWING IS THE SOLE PROPERTY OF MATWELD, INC. ANY REPRODUCTION IN PART OR AS A WHOLE WITHOUT THE WRITTEN PERMISSION OF MATWELD, INC. IS PROHIBITED.

DWG. NO.	00100K	REV. NO.	1
PART NAME	KOHLER GASOLINE POWER UNIT		
MATERIAL	ASSEMBLY	DRAWN	GLP
		DATE	11/18/10

ITEM NO.	PART NUMBER	DESCRIPTION	QTY
1	00116-01	EXHAUST DEFLECTOR	1
2	00127	FUEL CAP	1
3	00128	FUEL TANK	1
4	00129	FUEL VALVE	1
5	01032	IGNITION SWITCH	1
6	00153	UPPER CONSOLE ASSEMBLY	1
7	00154	FUEL TANK STRAP	1
8	00155	LOWER CONSOLE PANEL	1
9	00157K	CHOKE CABLE	1
10	00158	STEEL PLUG	1
11	00159	PLASTIC PLUG	1
12	00180	FUEL TANK INSULATION	1
13	02903	HOUR METER	1
14	5406-SHP-2	1/8 NPT SQ. HEAD PLUG	1
15	692303	STARTER SWITCH	1
16	A1000	1/4-20 x 1/2 HEX HEAD BOLT	4
17	A1001	1/4-20 x 3/4 HEX HEAD BOLT	4
18	A1005	1/4-20 x 1 3/4 HEX HEAD BOLT	10
19	A1021	5/16-18 x 3/4 HEX HEAD BOLT	4
20	A2046	1/4-20 NYLOCK NUT	14
21	A2190	1/4 SAE FLAT WASHER	32
22	A2191	5/16 SAE FLAT WASHER	4
23	A6325	#10-24 x 1/2 BHCS	4
24	A6699	#10-24 NYLOCK NUT	4
25	SERIAL TAG	MATWELD SERIAL TAG	1
26	SSB4-6S	DIA. 1/8 x 1/2 POP RIVOT	4



THIS SHEET SHOWS FRONT
PANEL & FUEL TANK

SHEET 1 OF 2

ISSUE NO.	REVISIONS REVISION	DATE	GENERAL NOTES	APPROVED BY	DATE	DWG. NO.	REV. NO.
1	UPDATED TO SOLIDWORKS FORMAT	11/18/10	<p>3 PLACE DECIMAL ± .010 2 PLACE DECIMAL ± .020 ANGLES ARE ± 0.5°</p>			00100K	1
<p>Matweld, Inc. PH: (270) 441-0063 FAX: (270) 441-3180 WEBSITE: www.matweld.com E-MAIL: sales@matweld.com</p>						<p>PART NAME ROPLER GASOLINE POWER UNIT</p>	
<p>THE INFORMATION CONTAINED IN THIS DRAWING IS THE SOLE PROPERTY OF MATWELD, INC. ANY REPRODUCTION IN PART OR AS A WHOLE WITHOUT THE WRITTEN PERMISSION OF OF MATWELD, INC. IS PROHIBITED.</p>						<p>MATERIAL ASSEMBLY</p>	
						<p>DRAWN GLP</p>	
						<p>DATE 11/18/10</p>	

Some elements in this drawing may not be accurately represented because the SolidWorks Document Manager is not installed on your system. (more)

ITEM NO.	PART NUMBER	DESCRIPTION	QTY	ITEM NO.	PART NUMBER	DESCRIPTION	QTY
1	00136	POWER UNIT MANIFOLD	1	12	00183	-120 O-RING	1
2	00137	CONTROL VALVE w/KNOB	2	13	231P-04	-04 O-RING PLUG	10
3	00138A	REPLACEMENT KNOB ONLY	2	14	231P-08	-08 O-RING PLUG	3
4	00139	RELIEF VALVE	1	15	231P-10	-10 O-RING PLUG	1
5	00140	CHECK VALVE	1	16	4503-12-12	3/4 BARB x 3/4 NPT 45 ELBOW	1
6	00141-01	FLOW CONTROL VALVE	1	17	515-08-10	-08 JIC x -10 O-RING 90 ELBOW	2
7	00145	FEMALE QUICK DISCONNECT	2	18	69-08-08	1/2 NPT x 1/2 NPT HEX NIPPLE	5
8	00146	MALE QUICK DISCONNECT	3	19	69-12-08	3/4 x 1/2 NPT HEX NIPPLE	1
9	00149	HYDRAULIC OIL FILTER	1	20	A5435	1/4-20 x 1 SHCS	2
10	00150	HYDRAULIC FILTER BODY	1	21	A5448	5/16-18 x 1 SHCS	2
11	00175	RETURN MANIFOLD	1				

ITEM 3 IS REPLACEMENT KNOB FOR ITEM 2 ONLY. ITEM 2 IS SUPPLIED WITH KNOB

ITEM 9 NOT SHOWN FOR CLARITY

THIS SHEET SHOW THE TOOL MANIFOLD

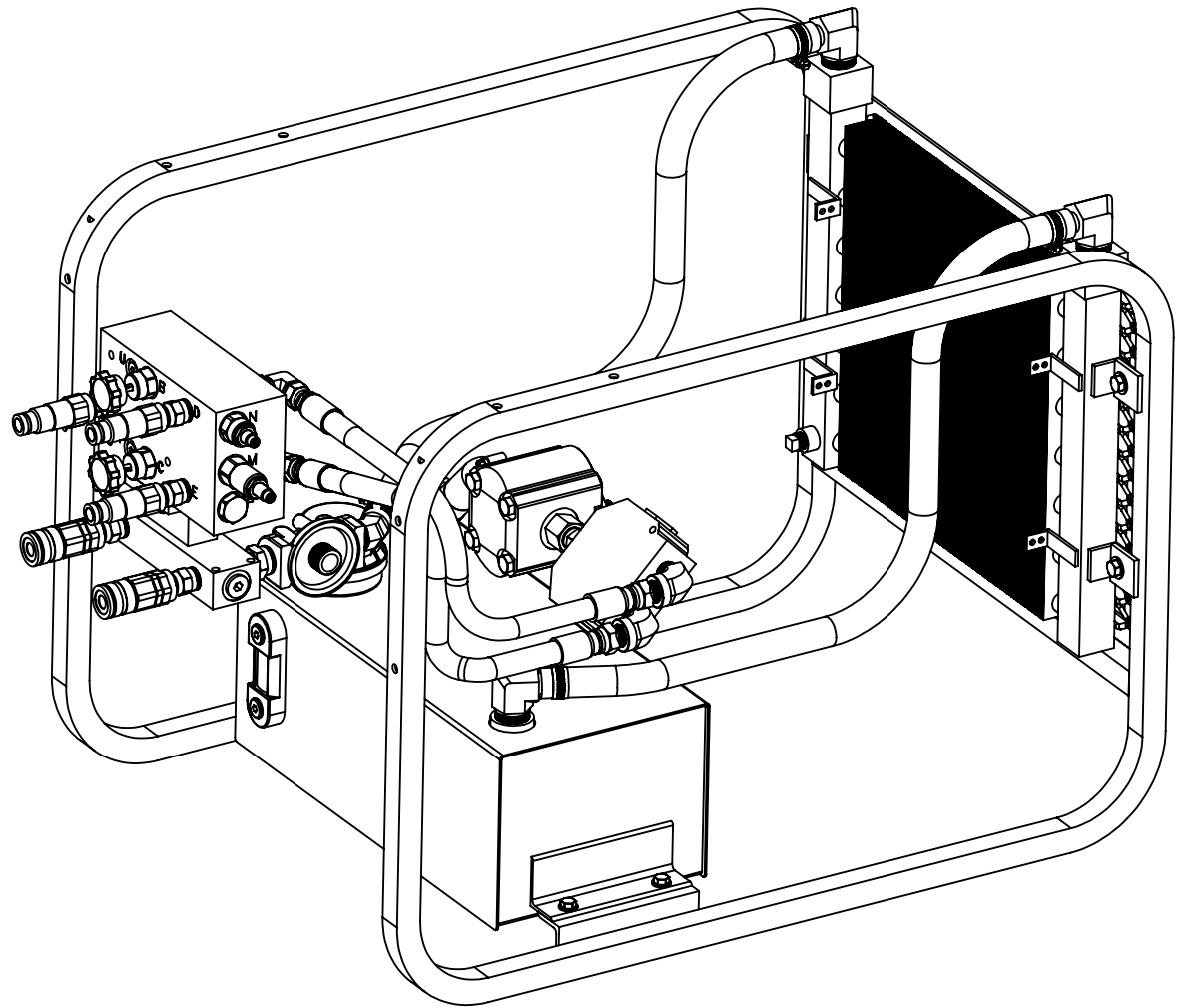
ISSUE NO.	REVISIONS	DATE	GENERAL NOTES	APPROVED BY	DATE
1	UPDATED TO SOILIDWORKS FORMAT	11/21/10	DEBURR AND BREAK ALL SHARP EDGES CHAMFER ALL HOLES ALL ANGLES @ 90° UNLESS NOTED OTHERWISE TOLERANCES UNLESS OTHERWISE SPECIFIED 3 PLACE DECIMAL ± .010 2 PLACE DECIMAL ± .020 ANGLES ARE ± 0.5°	ENG. GLP PROD. PURCH. Q.A. MGMNT.	11/21/10

Matweld, Inc.
 PH: (270) 444-0085 FAX: (270) 443-6180
 WEBSITE: www.matweld.com
 EMAIL: customerservice@matweld.com

THE INFORMATION CONTAINED IN THIS DRAWING IS THE SOLE PROPERTY OF MATWELD, INC. ANY REPRODUCTION IN PART OR AS A WHOLE WITHOUT THE WRITTEN PERMISSION OF MATWELD, INC. IS PROHIBITED.

DWG. NO.	00100K	REV. NO.	1
PART NAME	KOHLER GASOLINE POWER UNIT		
MATERIAL	ASSEMBLY	DRAWN	DATE
		GLP	11/21/10

ITEM NO.	PART NUMBER	DESCRIPTION	QTY
1	00119	FLOW DIVIDER	1
2	00125A	HYDRAULIC OIL COOLER	1
3	00126-1	COOLER - TANK HOSE	1
4	00131	HYDRAULIC FILL NECK	1
5	00135	MANIFOLD TO DIVIDER HOSE	2
6	00147	3/4 - 1 1/2 HOSE CLAMP	2
7	00148-1	SUCTION HOSE	1
8	00151-1	FILTER - COOLER HOSE	1
9	00152	1/2 - 1 1/4 HOSE CLAMP	4
10	00182	HYDRAULIC SIGHT GLASS	1
11	00197	3/4 NPT MAGNETIC PLUG	1
12	01008A	OIL RESERVOIR	1
13	02339	COOLER GUARD	1
14	05504	HYDRAULIC PUMP	1
15	69-08-08	1/2 NPT x 1/2 NPT HEX NIPPLE	1
16	269-10-08	-10 O-RING x 1/2 FEMALE NPT	1
17	4501-12-16	3/4 BARB x 1 NPT 90 ELBOW	3
18	4503-16-16	1 BARB x 1 NPT 45 ELBOW	1
19	4604-16-12	1 BARB x 012 O-RING	1
20	5502-08-08	1/2 NPT STREET 90 ELBOW	2
21	A1022	5/16-18 x 1 HEX HEAD BOLT	4
22	A1042	3/8-16 x 1 HEX HEAD BOLT	2
23	A1044	3/8-16 x 1 1/2 HEX HEAD BOLT	4
24	A1454	3/8-16 HEX JAM NUT	4
25	A2050	3/8-16 NYLOCK NUT	4
26	A2191	5/16 SAE FLAT WASHER	8
27	A2192	3/8 SAE FLAT WASHER	14
28	A2048	5/16-18 NYLOCK NUT	4



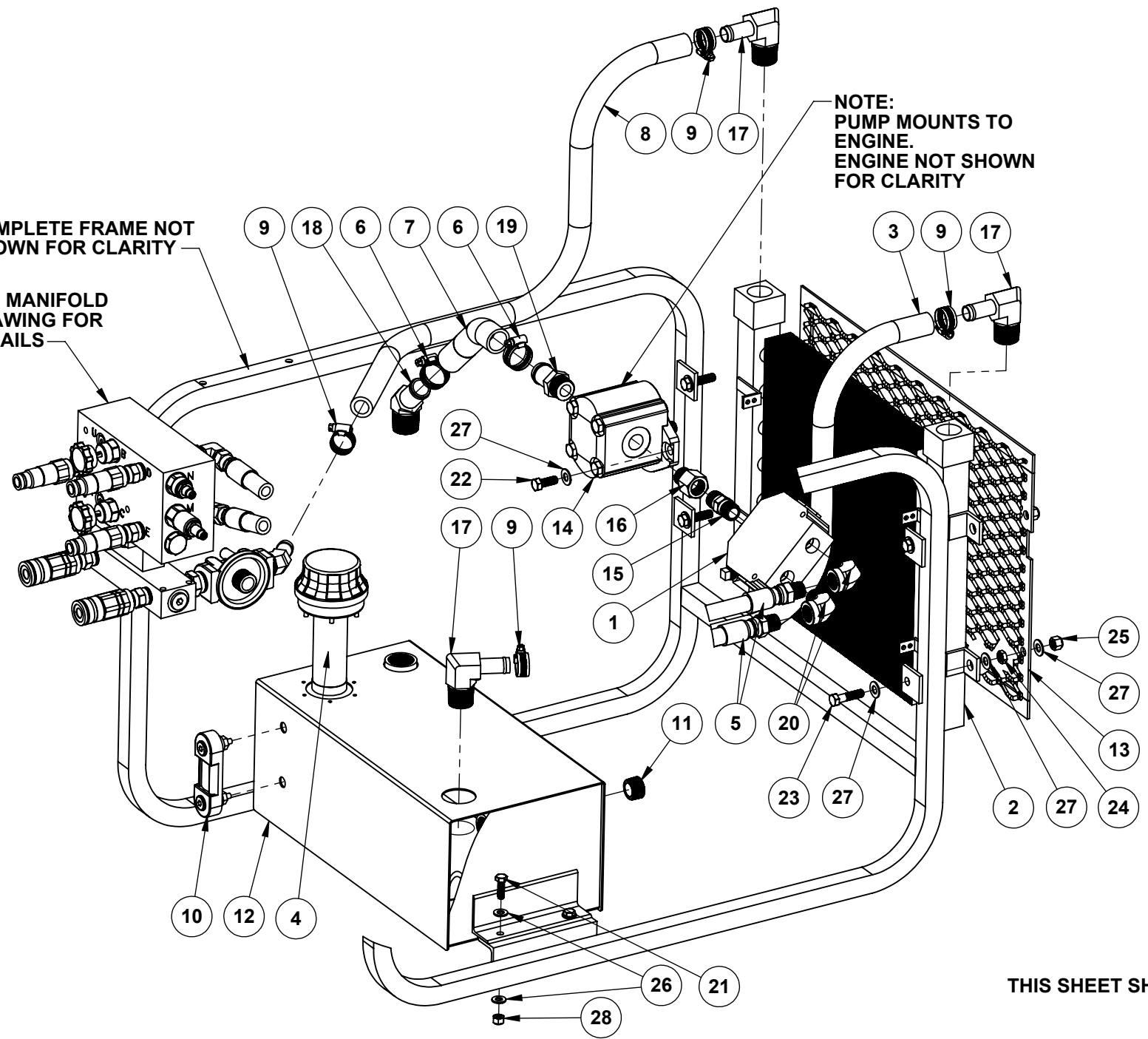
THIS SHEET SHOWS HYDRAULICS
SHEET 1 OF 2

ISSUE NO.	REVISIONS		DATE	GENERAL NOTES	APPROVED BY		DATE	DWG. NO.	REV. NO.
	REVISION				ENG.	GLP			
1	UPDATED TO SOLIDWORKS FORMAT		11/19/10	DEBURR AND BREAK ALL SHARP EDGES CHAMFER ALL HOLES ALL ANGLES @ 90° UNLESS NOTED OTHERWISE TOLERANCES UNLESS OTHERWISE SPECIFIED 3 PLACE DECIMAL ± .010 2 PLACE DECIMAL ± .020 ANGLES ARE ± 0.5°			11/19/10	00100K	1
Matweld, Inc. PH: (270) 444-0085 FAX: (270) 443-6180 WEBSITE: www.matweld.com EMAIL: customerservice@matweld.com THE INFORMATION CONTAINED IN THIS DRAWING IS THE SOLE PROPERTY OF MATWELD, INC. ANY REPRODUCTION IN PART OR AS A WHOLE WITHOUT THE WRITTEN PERMISSION OF MATWELD, INC. IS PROHIBITED.								KOHLER GASOLINE POWER UNIT MATERIAL: ASSEMBLY DRAWN: GLP DATE: 11/19/10	

COMPLETE FRAME NOT SHOWN FOR CLARITY

SEE MANIFOLD DRAWING FOR DETAILS

NOTE:
PUMP MOUNTS TO ENGINE.
ENGINE NOT SHOWN FOR CLARITY



THIS SHEET SHOWS HYDRAULICS
SHEET 2 OF 2

ISSUE NO.	REVISIONS		DATE	GENERAL NOTES	APPROVED BY		DATE	DWG. NO.	REV. NO.	
	REVISION				ENG.	GLP				
1	UPDATED TO SOLIDWORKS FORMAT		11/19/10	DEBURR AND BREAK ALL SHARP EDGES CHAMFER ALL HOLES ALL ANGLES @ 90° UNLESS NOTED OTHERWISE TOLERANCES UNLESS OTHERWISE SPECIFIED 3 PLACE DECIMAL ± .010 2 PLACE DECIMAL ± .020 ANGLES ARE ± 0.5°			11/19/10	00100K	1	
								PART NAME		
								KOHLER GASOLINE POWER UNIT		
								MATERIAL	DRAWN	DATE
								ASSEMBLY	GLP	11/19/10

Matweld, Inc.

PH: (270) 444-0085 FAX: (270) 443-6180
WEBSITE: www.matweld.com
EMAIL: customerservice@matweld.com

THE INFORMATION CONTAINED IN THIS DRAWING IS THE SOLE PROPERTY OF MATWELD, INC. ANY REPRODUCTION IN PART OR AS A WHOLE WITHOUT THE WRITTEN PERMISSION OF MATWELD, INC. IS PROHIBITED.